



**RAWSON
HOMES**
— EST 1978 —

Balmoral 35MKI



Yearly Rental Return* **\$74,550**

Display home for sale **\$1,065,000**

Our display homes are fitted with modern features, enhanced by cutting edge design and taking full advantage of the plot of land they're sitting on.

If you're interested in purchasing this home, please contact Lester Hopman for more information on 0411 278 102 or email lester.hopman@rawson.com.au

**11 Jadeite Street,
Leppington**

 5  3  2 **Lot size** 450m²

- Lease back at 7% per annum
- Minimum term: til January 2021
- Maximum term: til January 2022

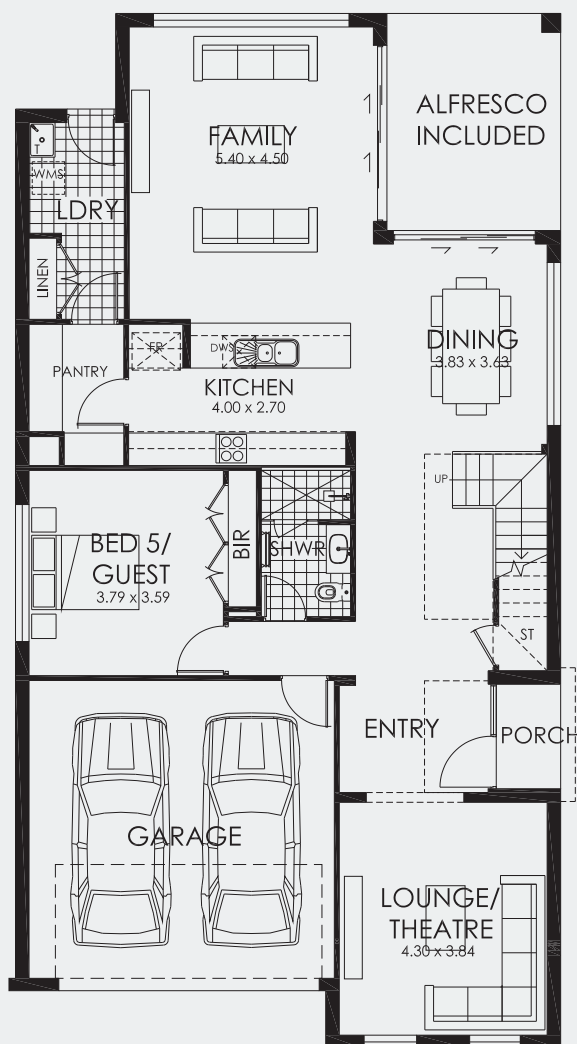
To find out more visit www.rawsonhomes.com.au/display-homes-for-sale

*Rent is calculated at a fixed rate of 7% p.a. of the contract price, paid monthly inclusive of GST and all outgoings and utilities (excluding electricity usage). Minimum lease terms apply. Rawson Homes will maintain the home during the lease term. Rawson Homes signage and fencing will be in place during the lease and will be removed prior to customer taking possession of the home at the end of the lease term. NSW BL No. 33493C ACT BL No. 19936252

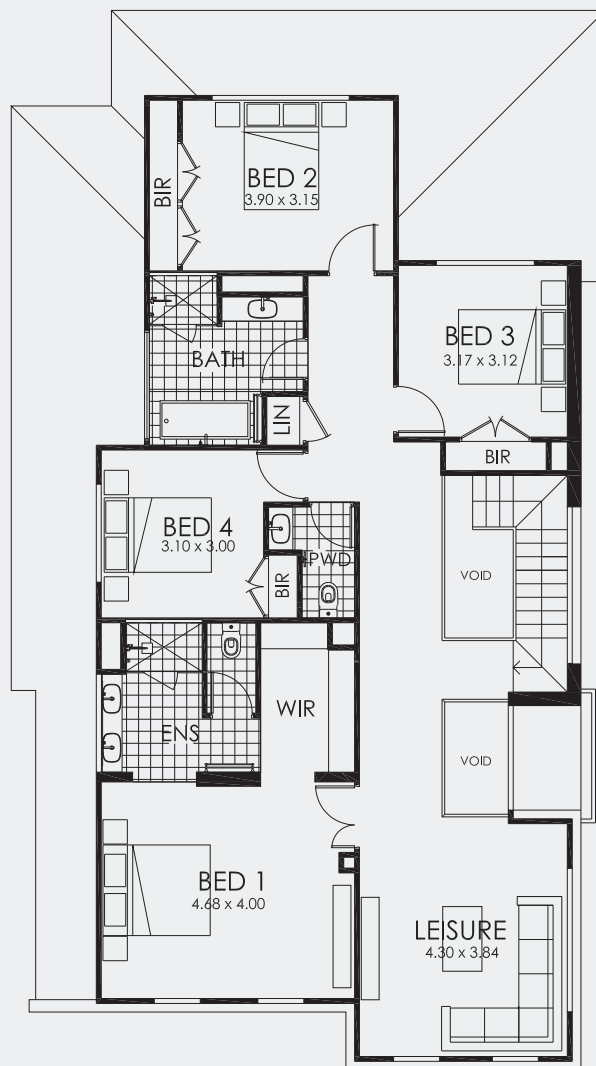


**RAWSON
HOMES**
— EST 1978 —

Balmoral 35MKI



GROUND FLOOR



FIRST FLOOR

**11 Jadeite Street,
Leppington**

5 3 2 **Lot size** 450m²

Ground Floor Living	134.12m ²
First Floor Living	137.73m ²
Garage	33.75m ²
Porch	2.40m ²
Alfresco	12.87m ²
Total	320.87m²
Overall Width Double Garage	10.190m
Overall Length	19.120m

To find out more visit www.rawsonhomes.com.au/display-homes-for-sale

*Rent is calculated at a fixed rate of 7% p.a. of the contract price, paid monthly inclusive of GST and all outgoings and utilities (excluding electricity usage). Minimum lease terms apply. Rawson Homes will maintain the home during the lease term. Rawson Homes signage and fencing will be in place during the lease and will be removed prior to customer taking possession of the home at the end of the lease term. NSW BL No. 33493C ACT BL No. 19936252