



**RAWSON
HOMES**
— EST 1978 —

Chifley 37MKII



Yearly Rental Return*

\$58,520

Display home for sale

\$836,000

Our display homes are fitted with modern features, enhanced by cutting edge design and taking full advantage of the plot of land they're sitting on.

If you're interested in purchasing this home, please contact Dominic Curkovic for more information on 0438 369 658 or email dominic.curkovic@rawson.com.au

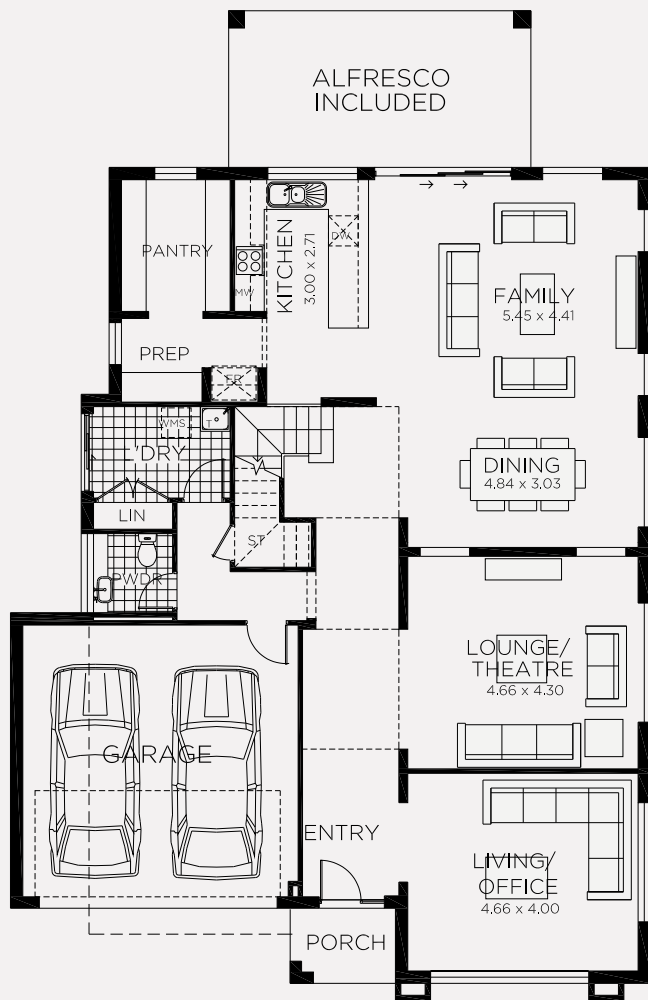
**20 Kingham Circuit,
Thornton**

 4  2.5  2 **Lot size** 502m²

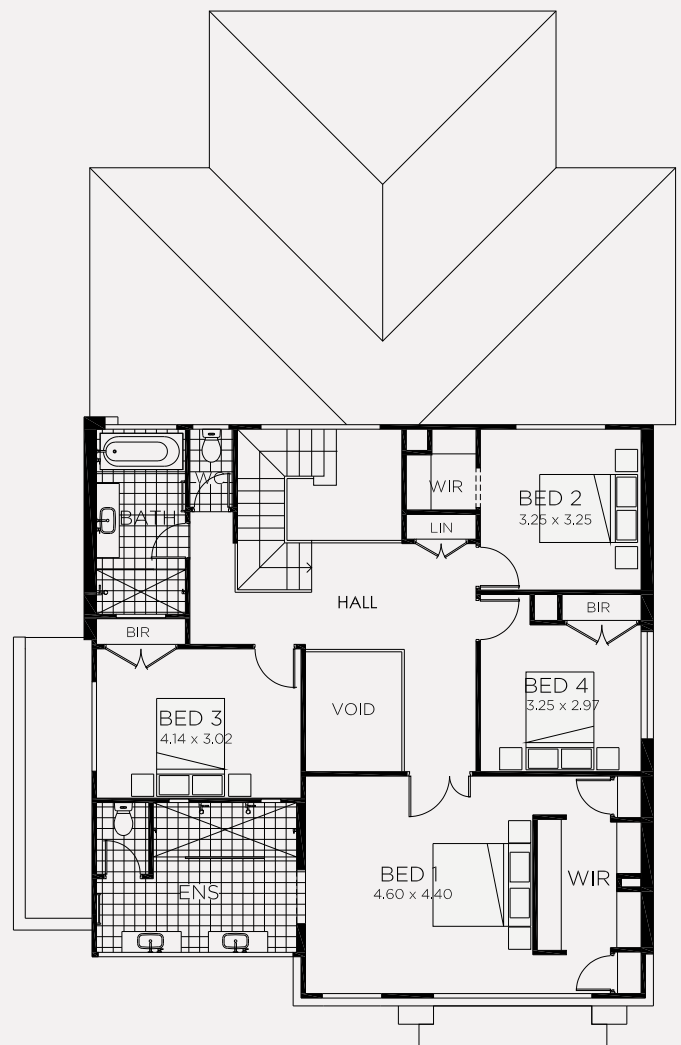
- Lease back at 7% per annum
- Minimum term: til November 2020
- Maximum term: Extension upon mutual agreement

To find out more visit www.rawsonhomes.com.au/display-homes-for-sale

*Rent is calculated at a fixed rate of 7% p.a. of the contract price, paid monthly inclusive of GST and all outgoings and utilities (excluding electricity usage). Minimum lease terms apply. Rawson Homes will maintain the home during the lease term. Rawson Homes signage and fencing will be in place during the lease and will be removed prior to customer taking possession of the home at the end of the lease term. NSW BL No. 33493C ACT BL No. 19936252



GROUND FLOOR



FIRST FLOOR

20 Kingham Circuit, Thornton

4 2.5 2 **Lot size** 502m²

Ground Floor Living	152.70m ²
First Floor Living	130.35m ²
Garage	33.70m ²
Porch	3.29m ²
Alfresco	19.38m ²
Total	339.42m²
Overall Width Double Garage	12.950m
Overall Length	20.030m

To find out more visit www.rawsonhomes.com.au/display-homes-for-sale

*Rent is calculated at a fixed rate of 7% p.a. of the contract price, paid monthly inclusive of GST and all outgoings and utilities (excluding electricity usage). Minimum lease terms apply. Rawson Homes will maintain the home during the lease term. Rawson Homes signage and fencing will be in place during the lease and will be removed prior to customer taking possession of the home at the end of the lease term. NSW BL No. 33493C ACT BL No. 19936252