



Yearly Rental Return\*

**\$59,850**

Display home for sale

**\$855,000**

Our display homes are fitted with modern features, enhanced by cutting edge design and taking full advantage of the plot of land they're sitting on.

If you're interested in purchasing this home, please contact Dominic Curkovic for more information on 0438 369 658 or email [dominic.curkovic@rawson.com.au](mailto:dominic.curkovic@rawson.com.au)

## Lot 141 McLoughlin Street, Marsden Park

 5  3.5  2 **Lot size** 375m<sup>2</sup>

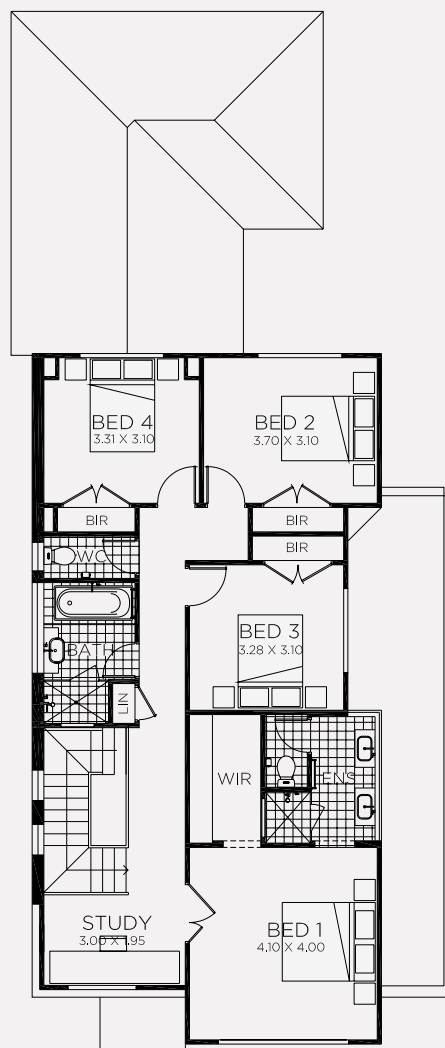
- Lease back at 7% per annum
- Minimum term: til July 2020
- Maximum term: til July 2021

To find out more visit [www.rawsonhomes.com.au/display-homes-for-sale](http://www.rawsonhomes.com.au/display-homes-for-sale)

\*Rent is calculated at a fixed rate of 7% p.a. of the contract price, paid monthly inclusive of GST and all outgoings and utilities (excluding electricity usage). Minimum lease terms apply. Rawson Homes will maintain the home during the lease term. Rawson Homes signage and fencing will be in place during the lease and will be removed prior to customer taking possession of the home at the end of the lease term. NSW BL No. 33493C ACT BL No. 19936252



GROUND FLOOR



FIRST FLOOR

## Lot 141 McLoughlin Street, Marsden Park

5 3.5 2 **Lot size** 375m<sup>2</sup>

Ground Floor Living	108.61m <sup>2</sup>
First Floor Living	103.09m <sup>2</sup>
Garage	32.83m <sup>2</sup>
Porch	1.78m <sup>2</sup>
Alfresco	9.77m <sup>2</sup>
<b>Total</b>	<b>256.08m<sup>2</sup></b>
Overall Width Double Garage	9.000m
Overall Length	21.425m

To find out more visit [www.rawsonhomes.com.au/display-homes-for-sale](http://www.rawsonhomes.com.au/display-homes-for-sale)

\*Rent is calculated at a fixed rate of 7% p.a. of the contract price, paid monthly inclusive of GST and all outgoings and utilities (excluding electricity usage). Minimum lease terms apply. Rawson Homes will maintain the home during the lease term. Rawson Homes signage and fencing will be in place during the lease and will be removed prior to customer taking possession of the home at the end of the lease term. NSW BL No. 33493C ACT BL No. 19936252