



**RAWSON  
HOMES**  
— EST 1978 —

**Kymira 29MKI**



Yearly Rental Return\*

**\$80,150**

Display home for sale **\$1,145,000**

Our display homes are fitted with modern features, enhanced by cutting edge design and taking full advantage of the plot of land they're sitting on.

If you're interested in purchasing this home, please contact Dominic Curkovic for more information on 0438 369 658 or email [dominic.curkovic@rawson.com.au](mailto:dominic.curkovic@rawson.com.au)

### **31 Kondalea Way, Denman Prospect**

 4  2.5  2 **Lot size** 480m<sup>2</sup>

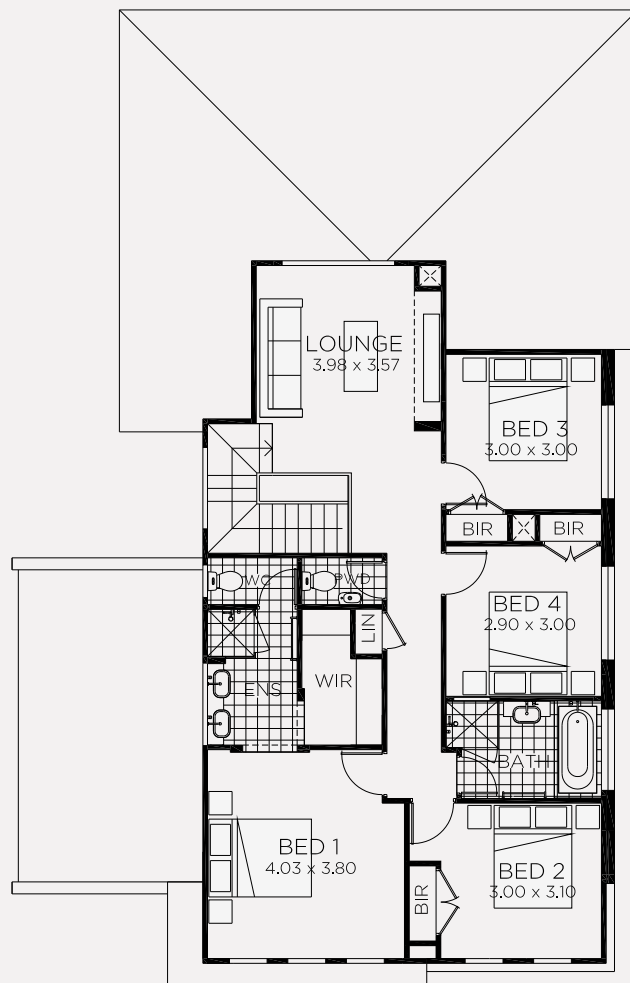
- Lease back at 7% per annum
- Minimum term: til October 2019
- Maximum term: til October 2022

To find out more visit [www.rawsonhomes.com.au/display-homes-for-sale](http://www.rawsonhomes.com.au/display-homes-for-sale)

\*Rent is calculated at a fixed rate of 7% p.a. of the contract price, paid monthly inclusive of GST and all outgoings and utilities (excluding electricity usage). Minimum lease terms apply. Rawson Homes will maintain the home during the lease term. Rawson Homes signage and fencing will be in place during the lease and will be removed prior to customer taking possession of the home at the end of the lease term. NSW BL No. 33493C ACT BL No. 19936252



GROUND FLOOR



FIRST FLOOR

## 31 Kondalea Way, Denman Prospect

4 2.5 2 **Lot size** 480m<sup>2</sup>

Ground Floor Living	119.64m <sup>2</sup>
First Floor Living	98.91m <sup>2</sup>
Garage	37.96m <sup>2</sup>
Porch	2.33m <sup>2</sup>
Alfresco	13.07m <sup>2</sup>
<b>Total</b>	<b>271.91m<sup>2</sup></b>
Overall Width Double Garage	11.620m
Overall Length	18.350m

To find out more visit [www.rawsonhomes.com.au/display-homes-for-sale](http://www.rawsonhomes.com.au/display-homes-for-sale)

\*Rent is calculated at a fixed rate of 7% p.a. of the contract price, paid monthly inclusive of GST and all outgoings and utilities (excluding electricity usage). Minimum lease terms apply. Rawson Homes will maintain the home during the lease term. Rawson Homes signage and fencing will be in place during the lease and will be removed prior to customer taking possession of the home at the end of the lease term. NSW BL No. 33493C ACT BL No. 19936252