



Yearly Rental Return\* **\$60,690**

Display home for sale **\$867,000**

Our display homes are fitted with modern features, enhanced by cutting edge design and taking full advantage of the plot of land they're sitting on.

If you're interested in purchasing this home, please contact Lester Hopman for more information on 0411 278 102 or email [lester.hopman@rawson.com.au](mailto:lester.hopman@rawson.com.au)

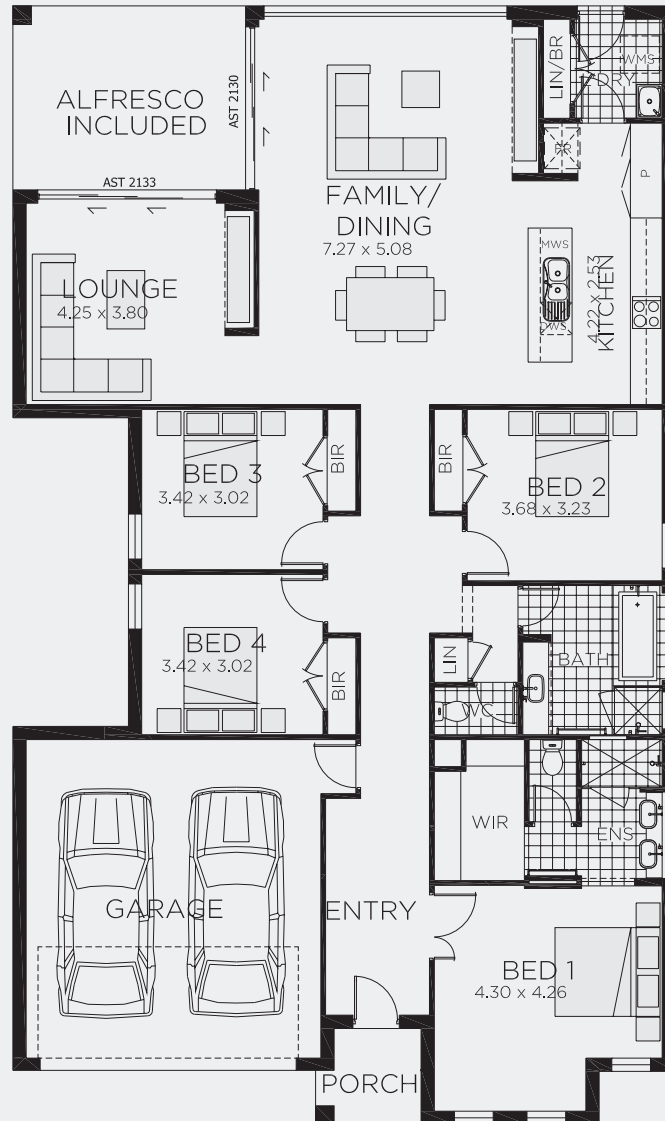
## 6 Popple Way, Calderwood Valley

 4  2  2 **Lot size** 540m<sup>2</sup>

- Lease back at 7% per annum
- Minimum term: til November 2020
- Maximum term: Extension upon mutual agreement

To find out more visit [www.rawsonhomes.com.au/display-homes-for-sale](http://www.rawsonhomes.com.au/display-homes-for-sale)

\*Rent is calculated at a fixed rate of 7% p.a. of the contract price, paid monthly inclusive of GST and all outgoings and utilities (excluding electricity usage). Minimum lease terms apply. Rawson Homes will maintain the home during the lease term. Rawson Homes signage and fencing will be in place during the lease and will be removed prior to customer taking possession of the home at the end of the lease term. NSW BL No. 33493C ACT BL No. 19936252



## 6 Popple Way, Calderwood Valley

4 2 2 **Lot size** 450m<sup>2</sup>

Ground Floor Living	187.57m <sup>2</sup>
Garage	37.67m <sup>2</sup>
Porch	3.32m <sup>2</sup>
Alfresco	15.23m <sup>2</sup>
<b>Total</b>	<b>243.79m<sup>2</sup></b>
Overall Width Double Garage	12.500m
Overall Length	21.100m

To find out more visit [www.rawsonhomes.com.au/display-homes-for-sale](http://www.rawsonhomes.com.au/display-homes-for-sale)

\*Rent is calculated at a fixed rate of 7% p.a. of the contract price, paid monthly inclusive of GST and all outgoings and utilities (excluding electricity usage). Minimum lease terms apply. Rawson Homes will maintain the home during the lease term. Rawson Homes signage and fencing will be in place during the lease and will be removed prior to customer taking possession of the home at the end of the lease term. NSW BL No. 33493C ACT BL No. 19936252