



Yearly Rental Return*

\$72,660

Display home for sale **\$1,038,000**

Our display homes are fitted with modern features, enhanced by cutting edge design and taking full advantage of the plot of land they're sitting on.

If you're interested in purchasing this home, please contact Dominic Curkovic for more information on 0438 369 658 or email dominic.curkovic@rawson.com.au

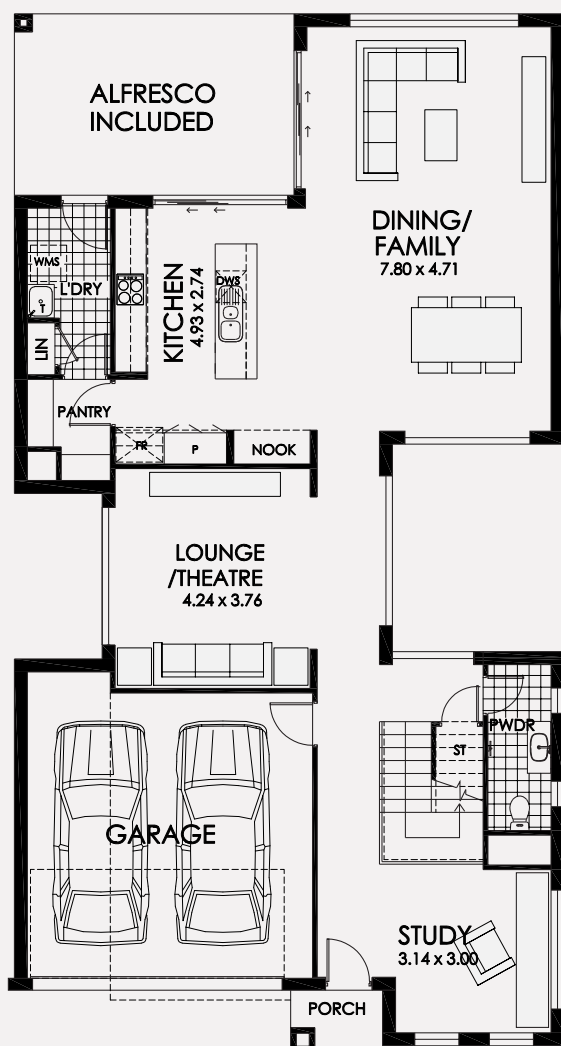
**15 Jadeite Street,
Leppington**

 4  2.5  2 **Lot size** 368m²

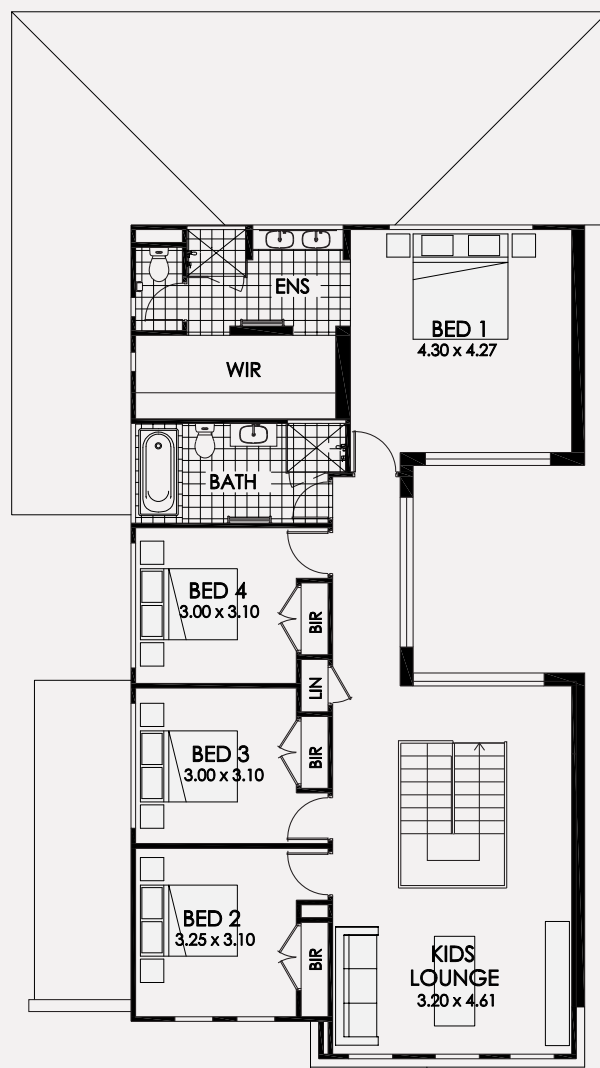
- Lease back at 7% per annum
- Minimum term: til January 2021
- Maximum term: til January 2022

To find out more visit www.rawsonhomes.com.au/display-homes-for-sale

*Rent is calculated at a fixed rate of 7% p.a. of the contract price, paid monthly inclusive of GST and all outgoings and utilities (excluding electricity usage). Minimum lease terms apply. Rawson Homes will maintain the home during the lease term. Rawson Homes signage and fencing will be in place during the lease and will be removed prior to customer taking possession of the home at the end of the lease term. NSW BL No. 33493C ACT BL No. 19936252



GROUND FLOOR



FIRST FLOOR

15 Jadeite Street, Leppington

4 2.5 2 **Lot size** 368m²

Ground Floor Living	131.77m ²
First Floor Living	126.26m ²
Garage	34.15m ²
Porch	2.11m ²
Alfresco	18.87m ²
Total	313.16m²
Overall Width Double Garage	10.600m
Overall Length	20.020m

To find out more visit www.rawsonhomes.com.au/display-homes-for-sale

*Rent is calculated at a fixed rate of 7% p.a. of the contract price, paid monthly inclusive of GST and all outgoings and utilities (excluding electricity usage). Minimum lease terms apply. Rawson Homes will maintain the home during the lease term. Rawson Homes signage and fencing will be in place during the lease and will be removed prior to customer taking possession of the home at the end of the lease term. NSW BL No. 33493C ACT BL No. 19936252