



Fairview

This long modern home design fits more into everyday life. With four bedrooms, separate theatre room, family-sized laundry and an extensive open plan family, dining and kitchen area which flows onto the alfresco, gives you a sense of spaciousness.

- ✔ Compact four bedroom home design that welcomes you into its hallway entrance zone
- ✔ Theatre off to the side so you can watch movies without the distractions
- ✔ Ample storage for the toys and sports equipment we tend to collect

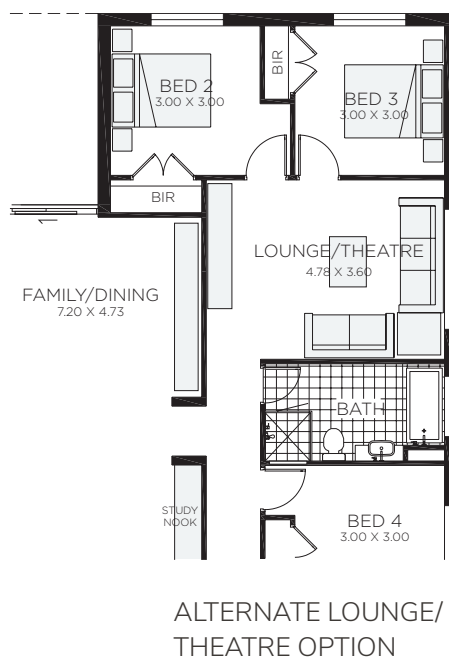
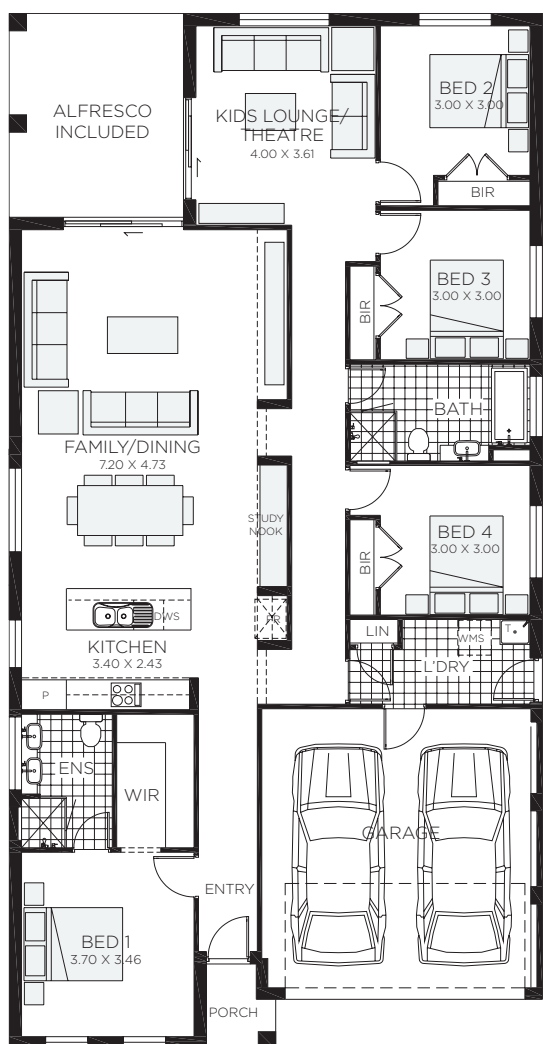
Suitable for

- ▶ Knockdown rebuild





Vogue



Fairview MKIV

4 bedrooms

2 bathrooms

2 car spaces

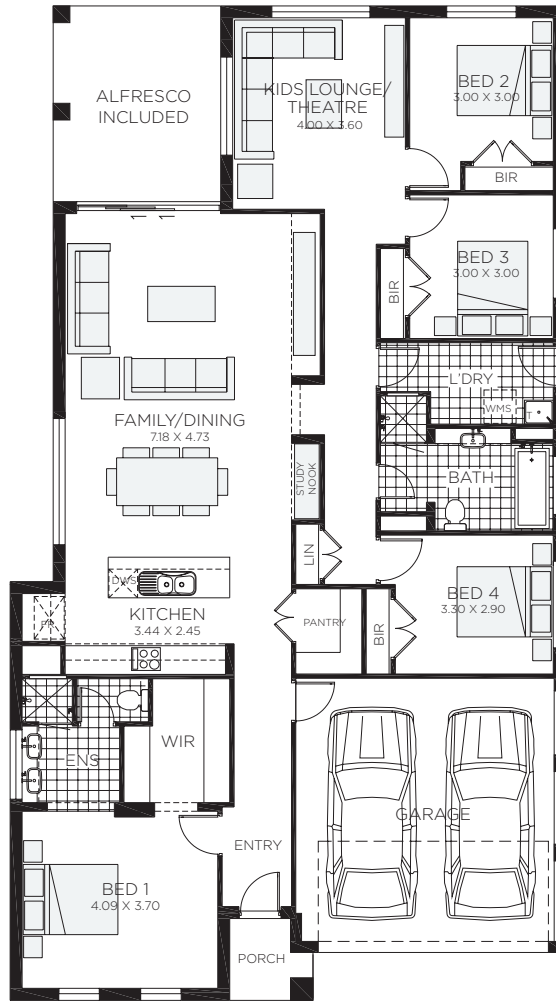
23.3 sq

Double garage fits: **12.60M** wide standard lot.


Ground Floor Living	167.67m ²	Overall Width Double Garage	10.700m
Garage	32.89m ²	Overall Length	20.780m
Porch	2.10m ²		
Alfresco	14.31m ²		
Total	216.97m ²		




**RAWSON
HOMES**
— EST 1978 —



Fairview MKV

 4 bedrooms

 2 bathrooms

 2 car spaces

 24.2 sq

Double garage fits: **13.50M** wide standard lot.

Ground Floor Living	175.00m ²	Overall Width Double Garage	11.600m
Garage	32.90m ²	Overall Length	20.780m
Porch	2.64m ²		
Alfresco	14.31m ²		
Total	224.85m ²		