



# Paxton Split Level

The Paxton is designed for both large families and challenging side sloping blocks. Available with both half or full storey splits and the option to have the garage on the upper or lower level, the Paxton also has variations for extended families with some plans featuring an additional rumpus room and second master suite with ensuite and walk-in robe.

- ✔ Can be modified for side gradient slopes and most block shapes
- ✔ Four or five bedroom house plans so your family has room to grow
- ✔ Generous open-plan living, dining and kitchen space joins onto the alfresco, giving a sense of spaciousness to the whole house
- ✔ Three modern facades so you can make this design your own

## Suitable for

- ▶ Knockdown rebuild
- ▶ Split Level



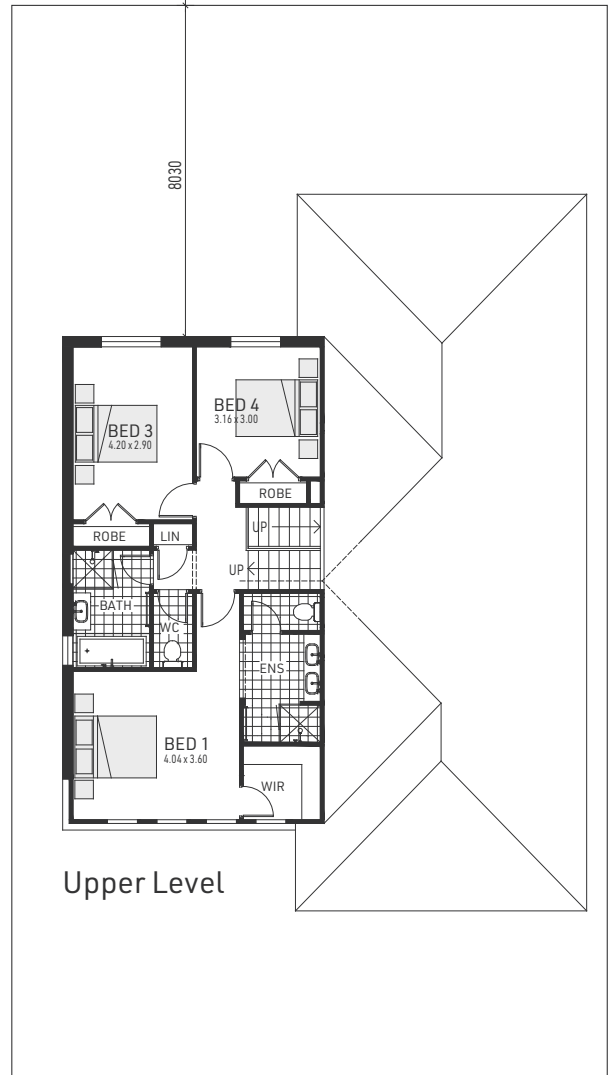
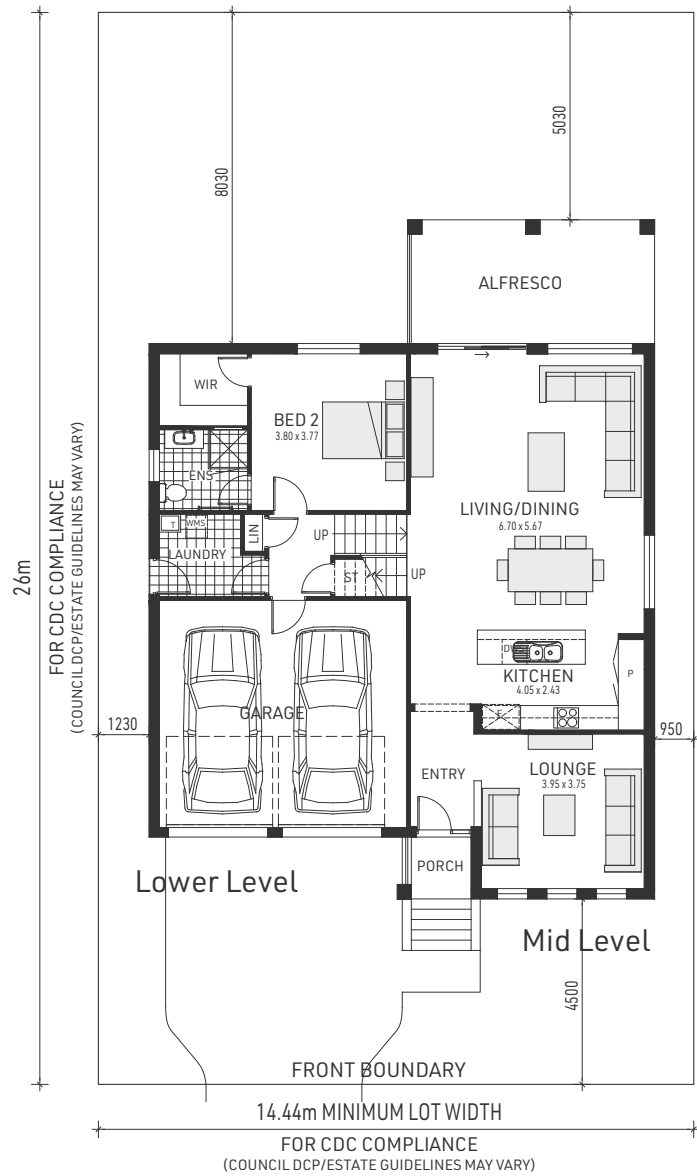
# Facades

## Paxton Split Level



Majestic

SIDE TO SIDE SLOPE  
DOWN SLOPE RIGHT TO LEFT SHOWN  
DOWN SLOPE LEFT TO RIGHT ACHIEVED WHEN HOME MIRROR REVERSED



# Paxton 27

Split Level

4 bedrooms

3 bathrooms

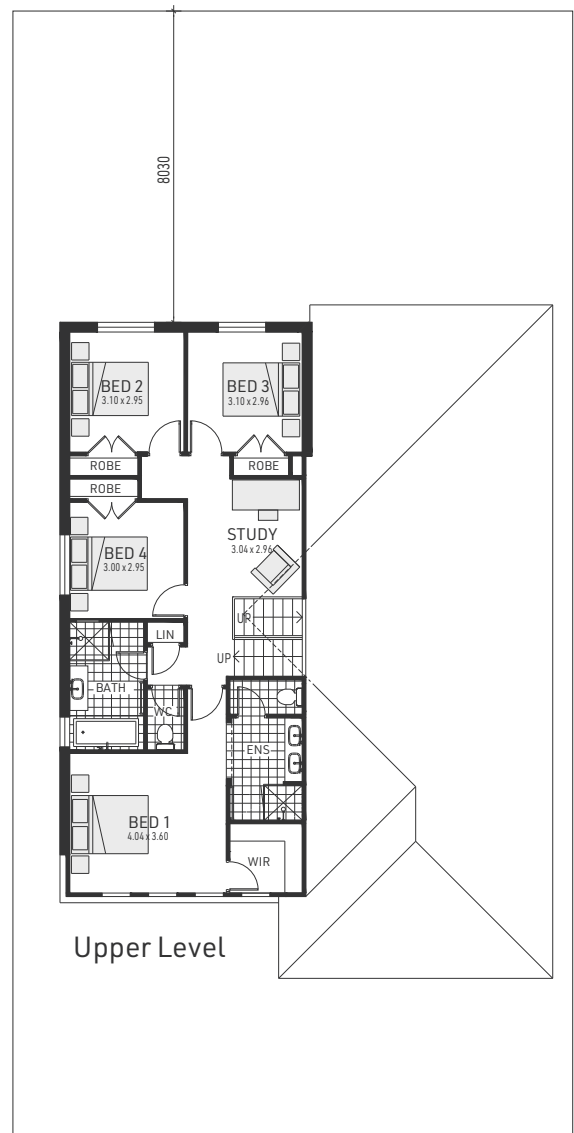
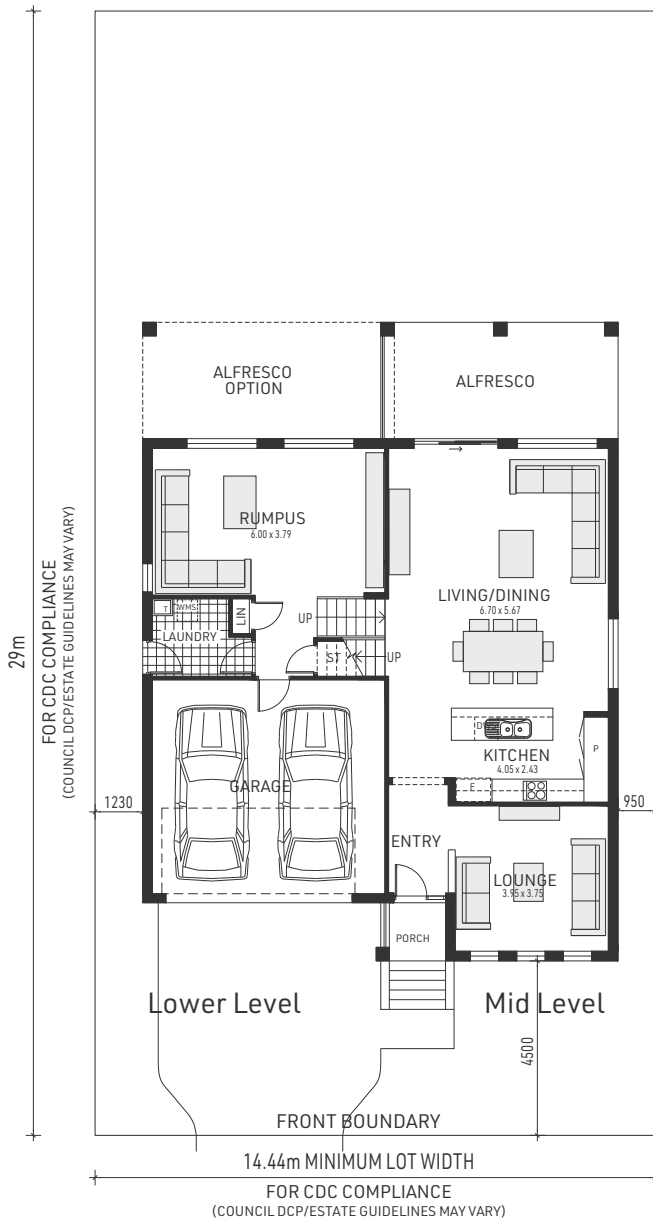
2 car spaces

26.77 sq

Double garage fits: **14.16M** wide standard lot.

Lower Level Floor Area	38.93m <sup>2</sup>	Overall Width Double Garage	12.260m
Mid Level Floor Area	78.61m <sup>2</sup>	Overall Length	16.470m
Upper Floor Area	74.87m <sup>2</sup>		
Garage	35.87m <sup>2</sup>		
Porch	2.50m <sup>2</sup>		
Alfresco	17.97m <sup>2</sup>		
Total	248.75m <sup>2</sup>		

SIDE TO SIDE SLOPE  
DOWN SLOPE RIGHT TO LEFT SHOWN  
DOWN SLOPE LEFT TO RIGHT ACHIEVED WHEN HOME MIRROR REVERSED



# Paxton 29

Split Level

4 bedrooms

3 bathrooms

2 car spaces

29.0 sq

Double garage fits: **14.16M** wide standard lot.

Lower Level Floor Area	38.84m <sup>2</sup>	Overall Width Double Garage	12.260m
Mid Level Floor Area	78.67m <sup>2</sup>	Overall Length	16.470m
Upper Floor Area	95.46m <sup>2</sup>		
Garage	35.90m <sup>2</sup>		
Porch	2.50m <sup>2</sup>		
Alfresco	18.36m <sup>2</sup>		
Total	269.73m <sup>2</sup>		