



# Porto

Our first single storey Duplex design, the Porto presents the perfect blend of character and charm with luxuriously appointed modern living. Stunning in its simplicity and sophistication, a long hallway opens out onto a spacious, light filled open plan living space which caters to all your entertaining needs.

- ✔ Light and bright living and dining overlooks generous alfresco area
- ✔ Three generous bedrooms with built-in robes
- ✔ Impressive master suite with WIR and ensuite with double vanity

#### Suitable for

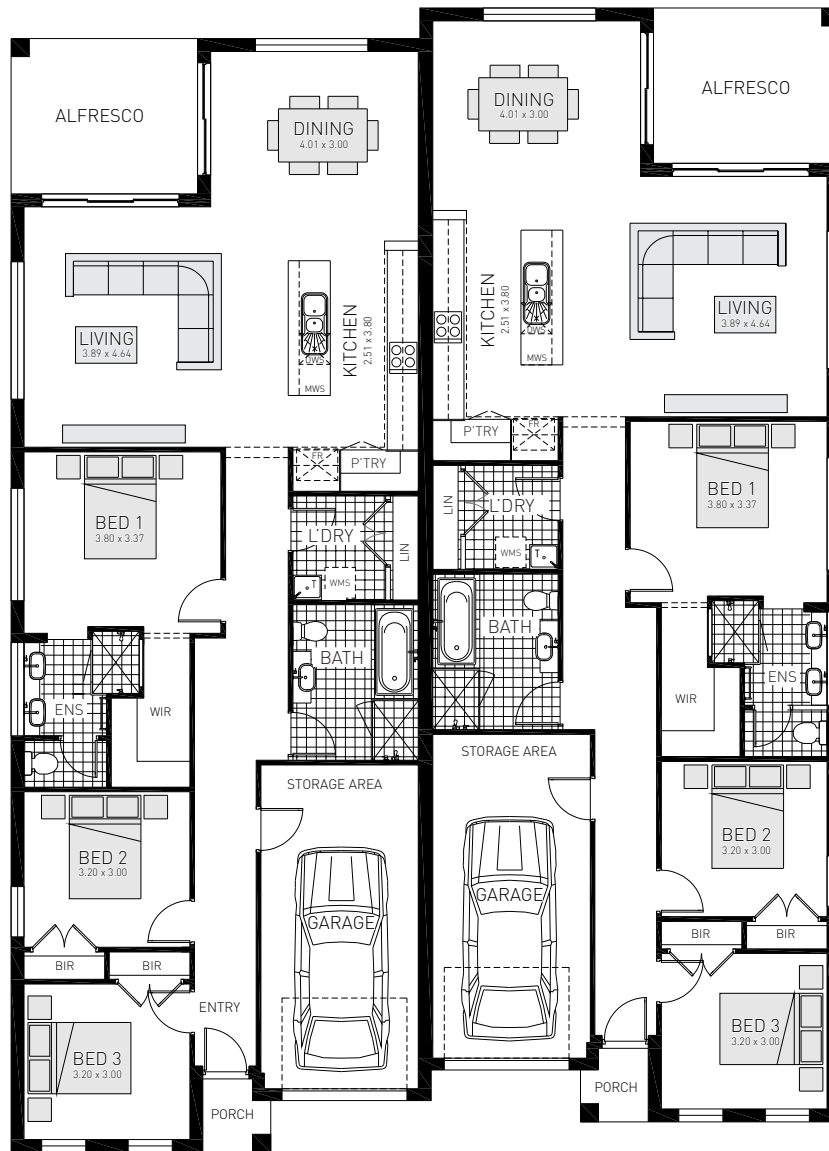
- ▶ Dual Occupancy
- ▶ Knockdown Rebuild







Classic







# Porto 18

 3 bedrooms

 2 bathrooms

 1 car space

 18.2sq

Single garage fits: 18.0M wide standard lot

Ground Floor Living	135.89m <sup>2</sup>	Overall Width Double Garage	16.00m
Garage	20.67m <sup>2</sup>	Overall Length	20.090m
Porch	1.71m <sup>2</sup>		
Alfresco	10.80m <sup>2</sup>		
Total	169.07m <sup>2</sup>		



**RAWSON  
HOMES**  
— EST 1978 —

**DUPLEX**