



# Yanderra

This Australian ranch style home features an opulent open plan living area that flows onto the alfresco, giving you flexibility when you're entertaining guests. The separate master suite is the ultimate luxury, with its private outdoor retreat and naturally lit walk-in robe and ensuite.

- ✓ Classic acreage design features a grand entertaining space that fulfils all your architecture wishes
- ✓ Secluded bedroom wing lets you sleep the night through undisturbed
- ✓ Large laundry and mud room is a life saver when it comes to acreage living
- ✓ Internal garage access means you can use it for additional storage

#### Suitable for

- Homestead







Majestic





# Yanderra 26

 4 bedrooms

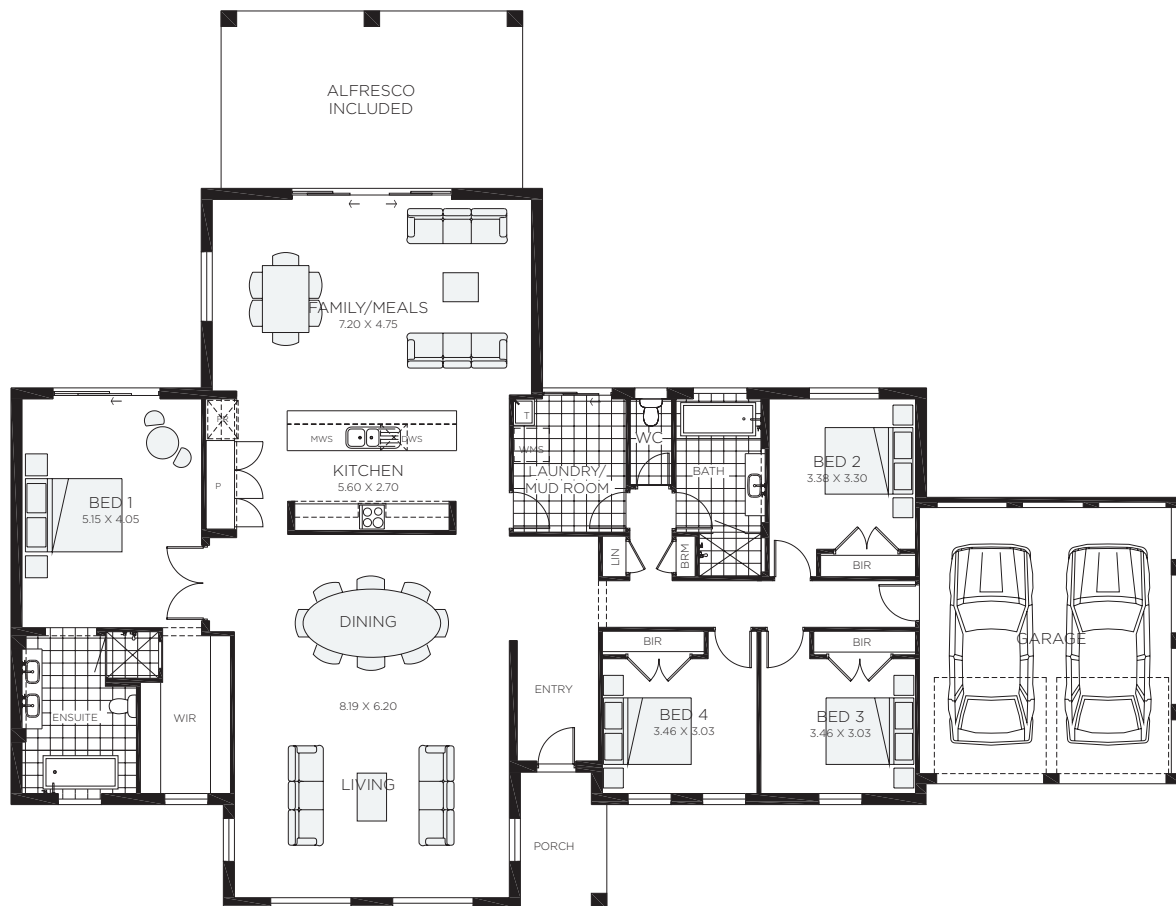
 2 bathrooms

 2 car spaces

 26.3 sq

Double garage fits: **26.65M** wide standard lot.

Ground Floor Living	183.35m <sup>2</sup>	Overall Width Double Garage	24.750m
Garage	35.18m <sup>2</sup>	Overall Length	17.390m
Porch	8.71m <sup>2</sup>		
Alfresco	17.25m <sup>2</sup>		
Total	244.49m <sup>2</sup>		



# Yanderra 34

4 bedrooms

2 bathrooms

2 car spaces

33.7 sq

Double garage fits: **28.30M** wide standard lot.

Ground Floor Living	242.33m <sup>2</sup>	Overall Width Double Garage	26.400m
Garage	38.14m <sup>2</sup>	Overall Length	20.250m
Porch	5.76m <sup>2</sup>		
Alfresco	27.20m <sup>2</sup>		
Total	313.43m <sup>2</sup>		