



Chifley

Designed to impress, the Chifley's modern home design is all about grand scale and proportions. With a perfect balance of shared living spaces, private retreats and seamless transitions between inside and outside areas, the Chifley gives you the freedom to entertain the way you like, regardless of the size of your guest list or the weather.

- ✔ The large butler's pantry lets you show off your inner master chef while keeping the mess behind the scenes
- ✔ Enjoy a quiet night in with a dedicated theatre room
- ✔ With five oversized bedrooms, two of which have an ensuite, there's room for the extended family to stay over (or not)

Suitable for

- ▶ Extended family
- ▶ Knockdown rebuild

📍 On Display

Chifley 40 Metro facade on display at HomeWorld Leppington
Chifley 37 MKII Metro facade on display at HomeWorld Thornton

Disclaimer: Photographs, artist impressions and other pictures in this brochure/book may show fixtures, fittings or finishes (render as an example) which are not supplied by Rawson Homes, or which are only available in some Rawson Homes designs or when selected as inclusions above the standard inclusions for a particular design. This may include landscaping and outdoor items, floor coverings, furniture, kitchen, bathroom and light fittings and decorative items, which are shown as examples only. References to block size are based on a standard block which is up to 700m² with up to 1m fall across the block, "M" class soil classification, all services within boundaries, garage setback up to 5.5m from front boundary, even cut and fill. Please speak to a Rawson New Home Consultant to discuss detailed home pricing for different designs and inclusions. Builders Lic No. NSW 33493C. ACT 19936252B. ABN 67 053 733 841. ACN 053 733 841



**RAWSON
HOMES**
— EST 1978 —



Metro



Classic



Majestic



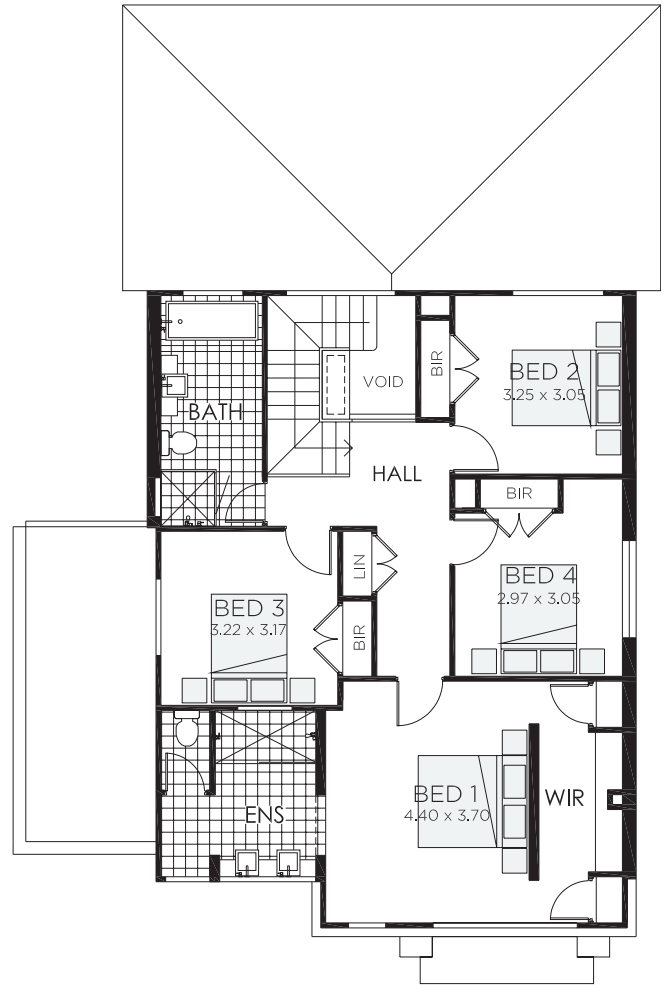
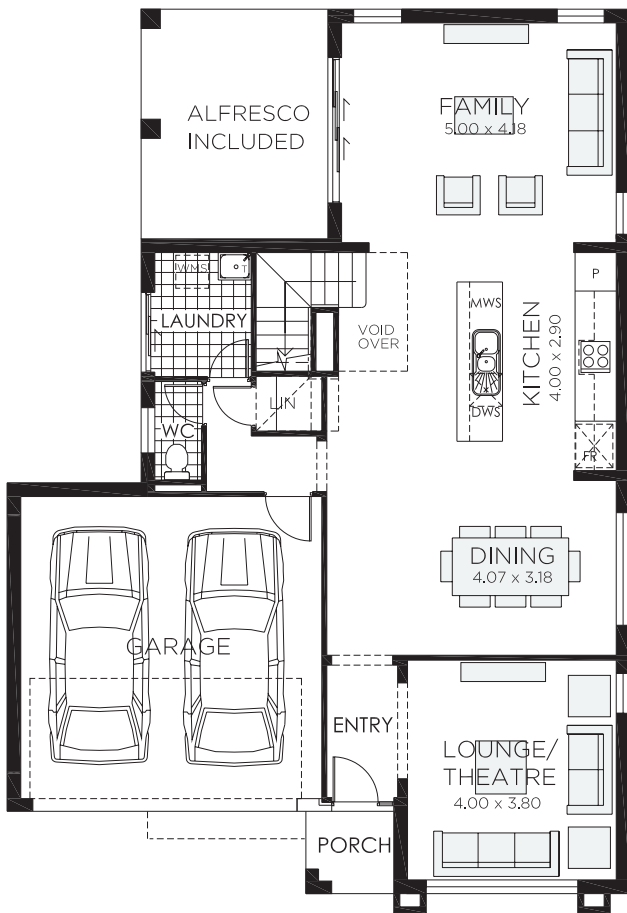
Trend




Vogue





Hampton




Chifley 27

 4 bedrooms

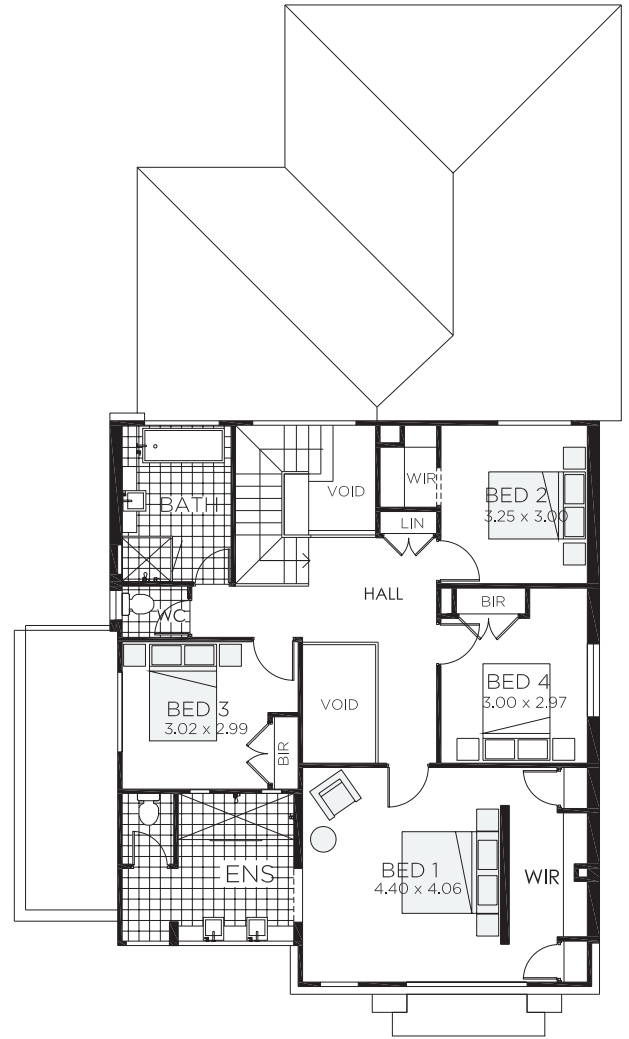
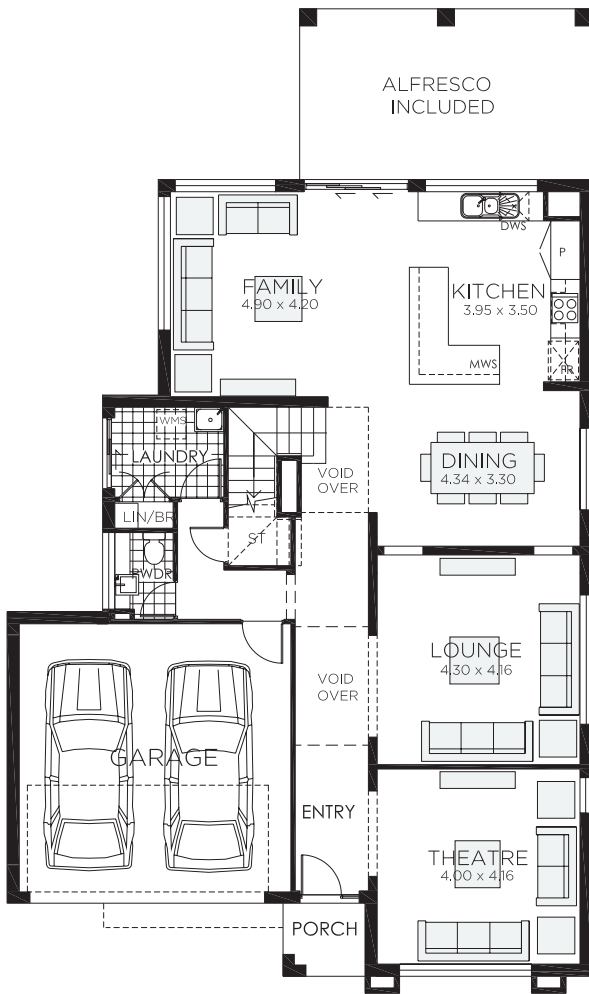
 2.5 bathrooms

 2 car spaces


 27.3 sq


Double garage fits: **13.24M** wide standard lot.


Ground Floor Living	103.32m ²	Overall Width Double Garage	11.340m
First Floor Living	100.32m ²	Overall Length	16.450m
Garage	33.40m ²		
Porch	2.43m ²		
Alfresco	14.20m ²		
Total	253.67m ²		



Chifley 32

 4-5 bedrooms

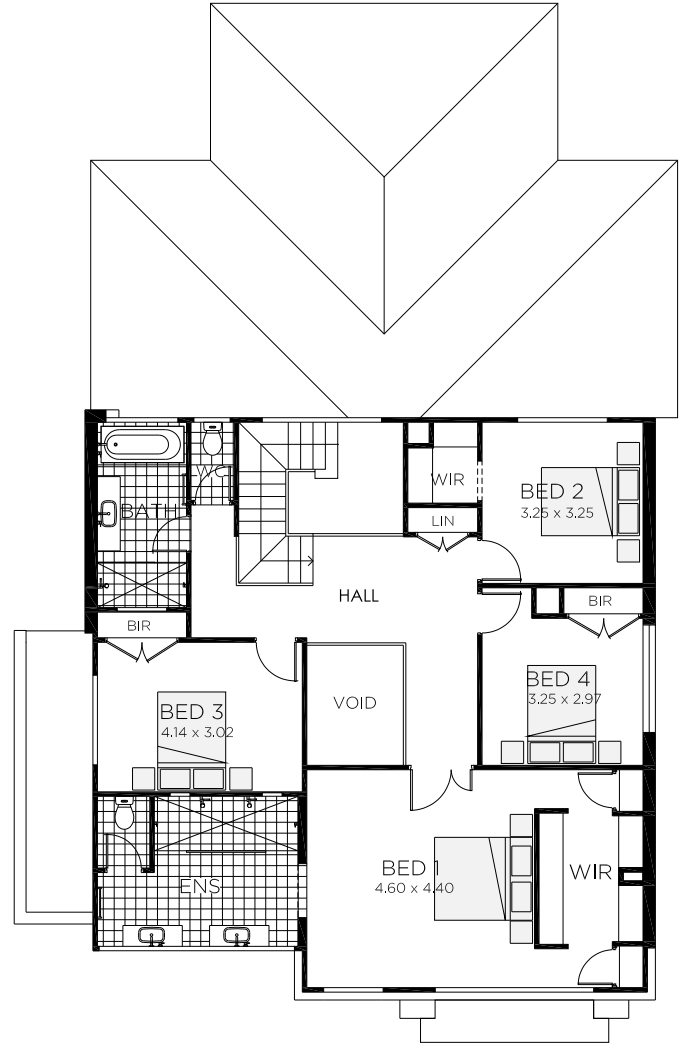
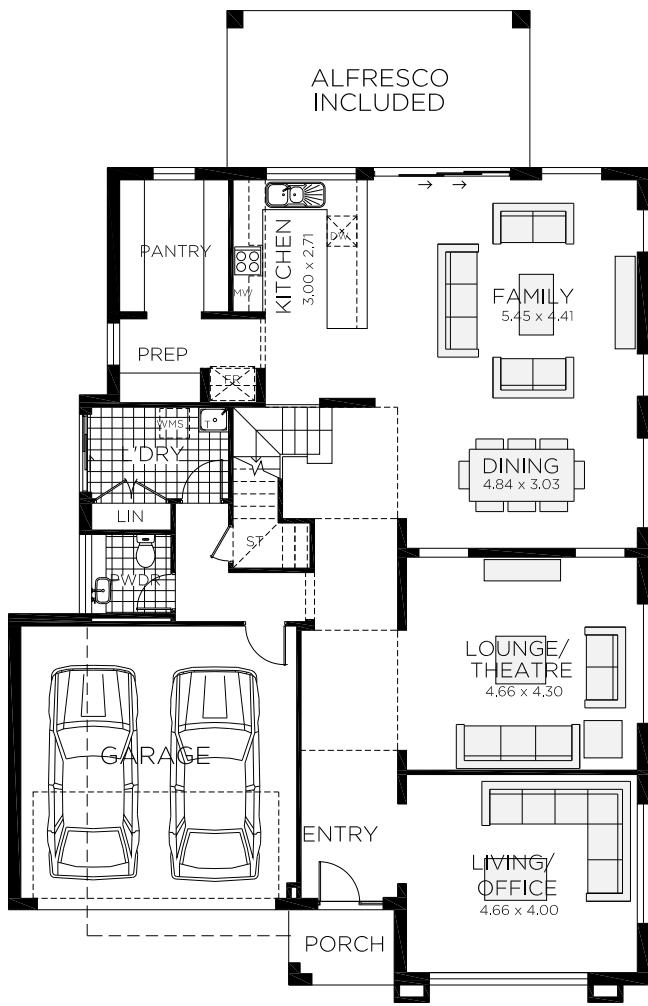
 2.5-3.5 bathrooms

 2 car spaces





 32.5 sq

Double garage fits: **13.90M** wide standard lot.

Ground Floor Living	129.35m ²	Overall Width Double Garage	12.000m
First Floor Living	113.46m ²	Overall Length	20.190m
Garage	33.28m ²		
Porch	2.50m ²		
Alfresco	21.00m ²		
Total	299.59m ²		

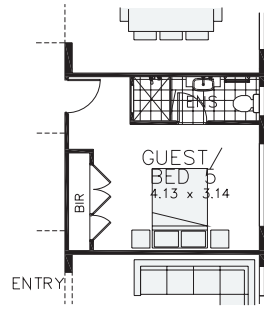
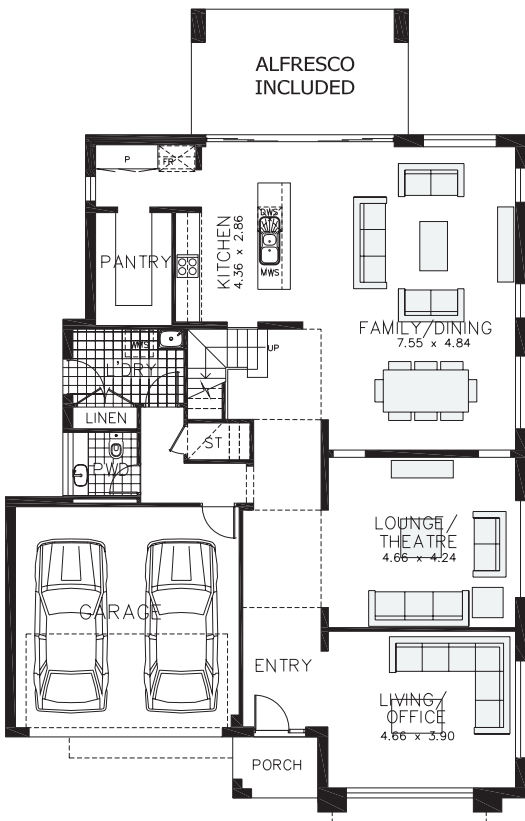


Chifley 37 MKII

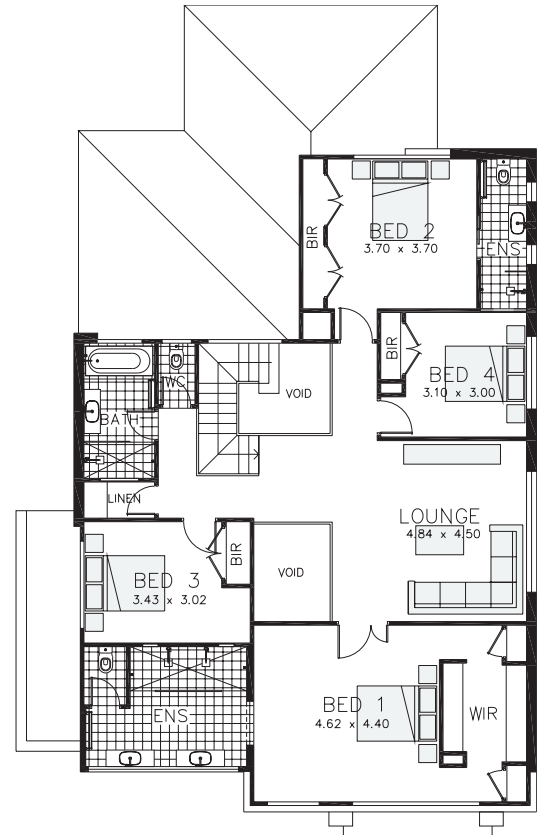
-  4 bedrooms
-  2.5 bathrooms
-  2 car spaces
-  36.5 sq

Double garage fits: **14.85M** wide standard lot.

Ground Floor Living	152.70m ²	Overall Width Double Garage	12.950m
First Floor Living	130.35m ²	Overall Length	20.030m
Garage	33.70m ²		
Porch	3.29m ²		
Alfresco	19.38m ²		
Total	339.42m ²		





GUEST/ FIVE BED OPTION



Chifley 40

 4-5 bedrooms

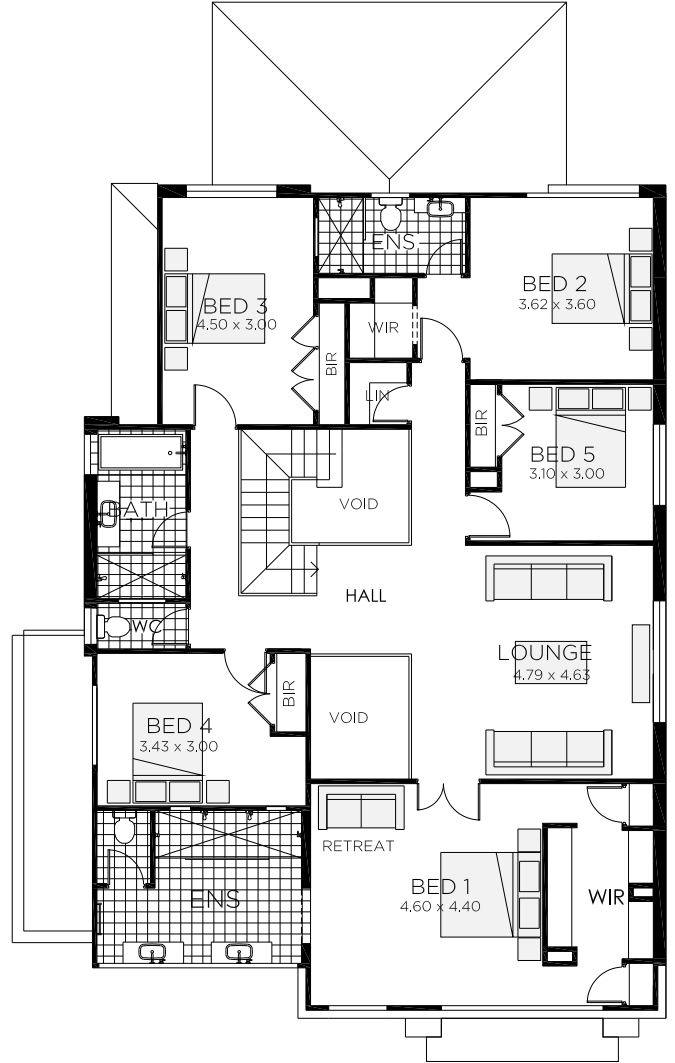
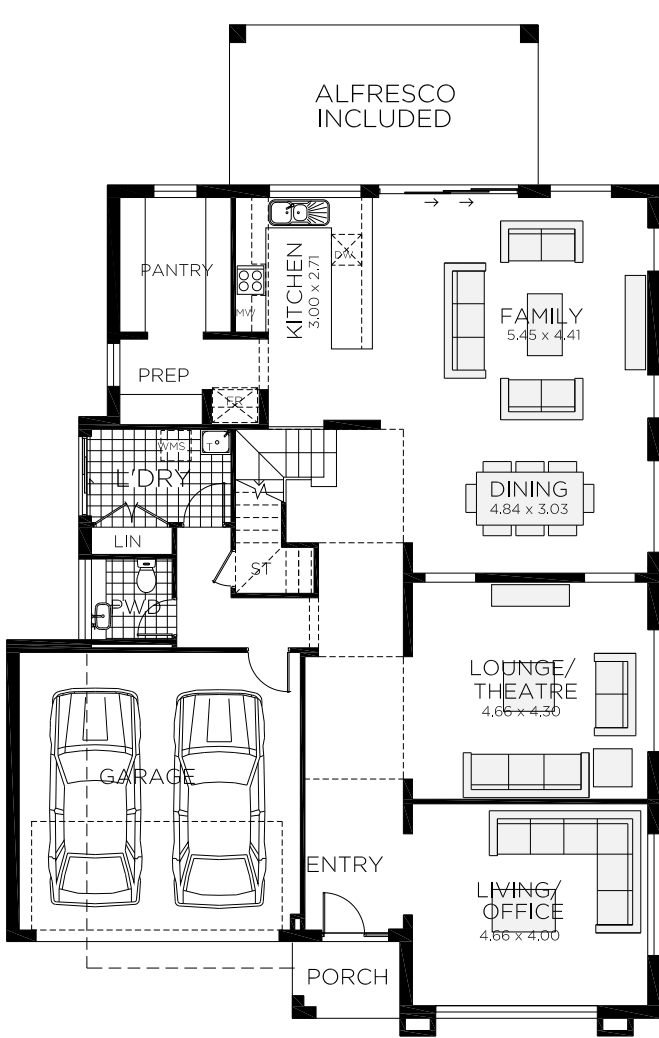
 3.5-4.5 bathrooms

 2 car spaces


 39.3 sq


Double garage fits: **14.85M** wide standard lot.


Ground Floor Living	153.29m ²	Overall Width Double Garage	12.950m
First Floor Living	158.34m ²	Overall Length	19.985m
Garage	33.71m ²		
Porch	3.22m ²		
Alfresco	16.88m ²		
Total	365.44m ²		



Chifley 42 MKII

 5 bedrooms

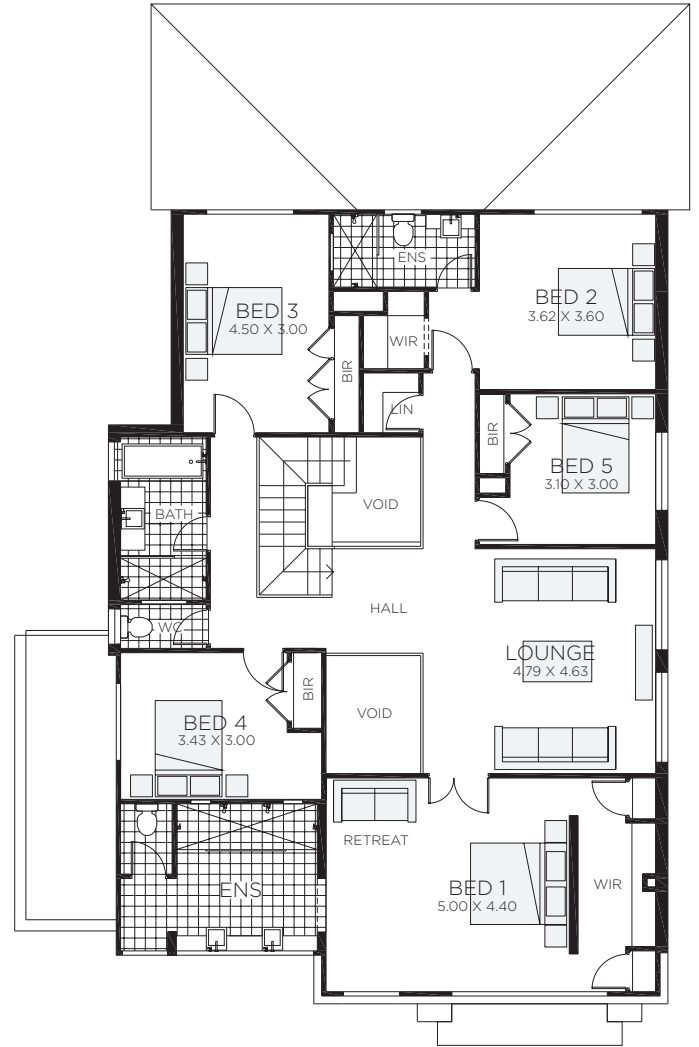
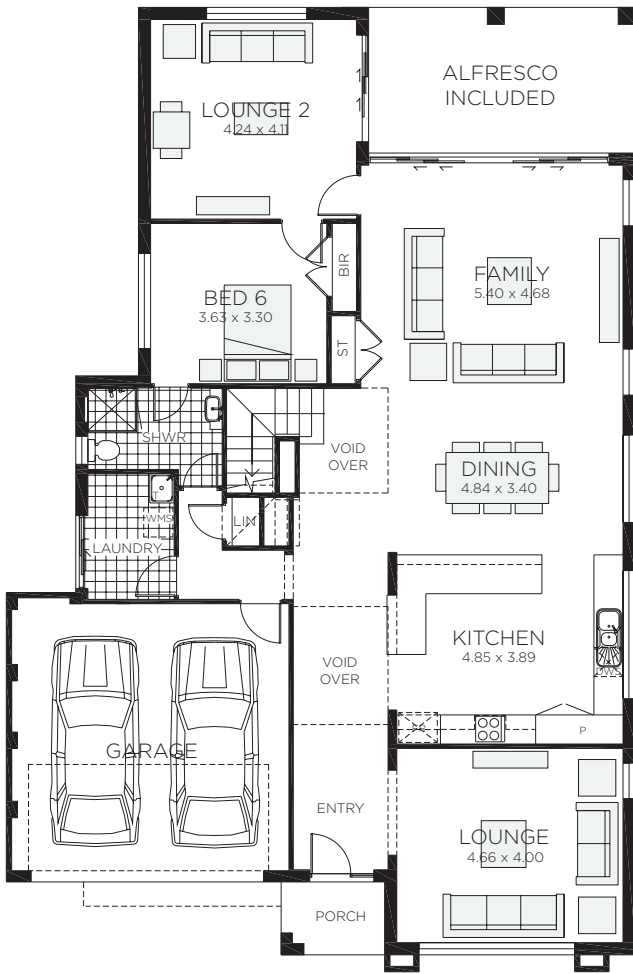
 3.5 bathrooms

 2 car spaces





 41.5 sq

Double garage fits: **14.85M** wide standard lot.

Ground Floor Living	152.70m ²	Overall Width Double Garage	12.950m
First Floor Living	177.07m ²	Overall Length	20.030m
Garage	33.70m ²		
Porch	3.29m ²		
Alfresco	19.38m ²		
Total	386.14m ²		



Chifley 43

-  6 bedrooms
-  2 car spaces
-  4 bathrooms
-  42.6 sq

Double garage fits: **14.85M** wide standard lot.

Ground Floor Living	163.80m ²	Overall Width Double Garage	12.950m
First Floor Living	179.04m ²	Overall Length	19.860m
Garage	33.64m ²		
Porch	3.20m ²		
Alfresco	16.47m ²		
Total	396.18m ²		