



# Kymira

For the family who loves to cook together, the Kymira's modern house plans are centred around the spacious kitchen. Its clever design lets you unwind quietly in the upstairs bedrooms while the rest of the family hangs out in the living areas downstairs. For those with extra-large families, there's the option to add an extra bedroom downstairs.

- ✔ Large windows brighten the bedrooms and living spaces with natural lighting
- ✔ Entertain your friends and family in the spacious living areas flowing through to the alfresco
- ✔ Versatile design that's suitable for standard lots from 13.5m wide

## Suitable for

- ▶ Extended family
- ▶ Knockdown rebuild

## 📍 On Display

**Kymira 36 Hampton facade** on display at Spring Farm  
**Kymira 29 MKI Elite facade** on display at Denman Prospect

Disclaimer: Photographs, artist impressions and other pictures in this brochure/book may show fixtures, fittings or finishes (render as an example) which are not supplied by Rawson Homes, or which are only available in some Rawson Homes designs or when selected as inclusions above the standard inclusions for a particular design. This may include landscaping and outdoor items, floor coverings, furniture, kitchen, bathroom and light fittings and decorative items, which are shown as examples only. References to block size are based on a standard block which is up to 700m<sup>2</sup> with up to 1m fall across the block, "M" class soil classification, all services within boundaries, garage setback up to 5.5m from front boundary, even cut and fill. Please speak to a Rawson New Home Consultant to discuss detailed home pricing for different designs and inclusions. Builders Lic No. NSW 33493C. ACT 19936252B. ABN 67 053 733 841. ACN 053 733 841



**RAWSON  
HOMES**  
— EST 1978 —



Classic



Elite



Hampton



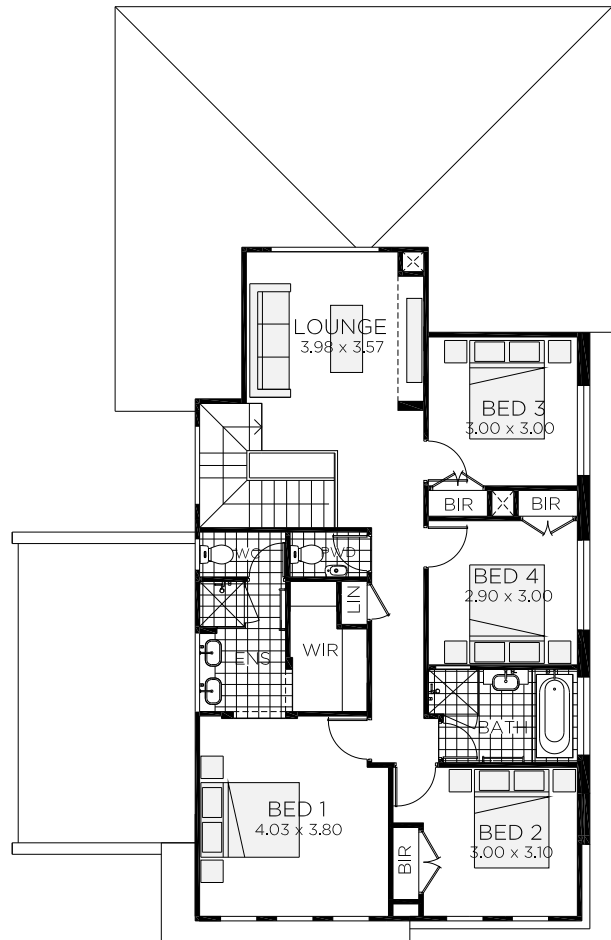
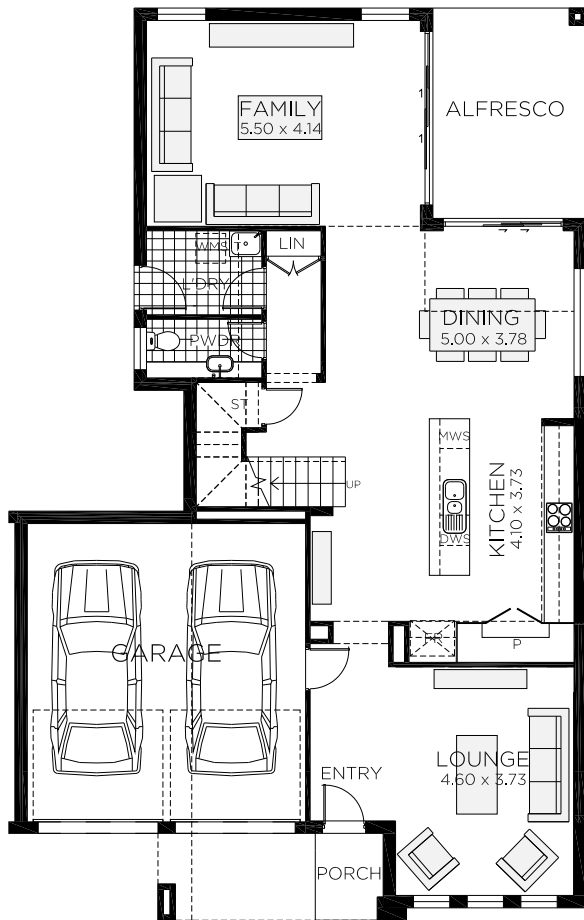
Majestic




Trend





Vogue



# Kymira 29 MKI

 4 bedrooms

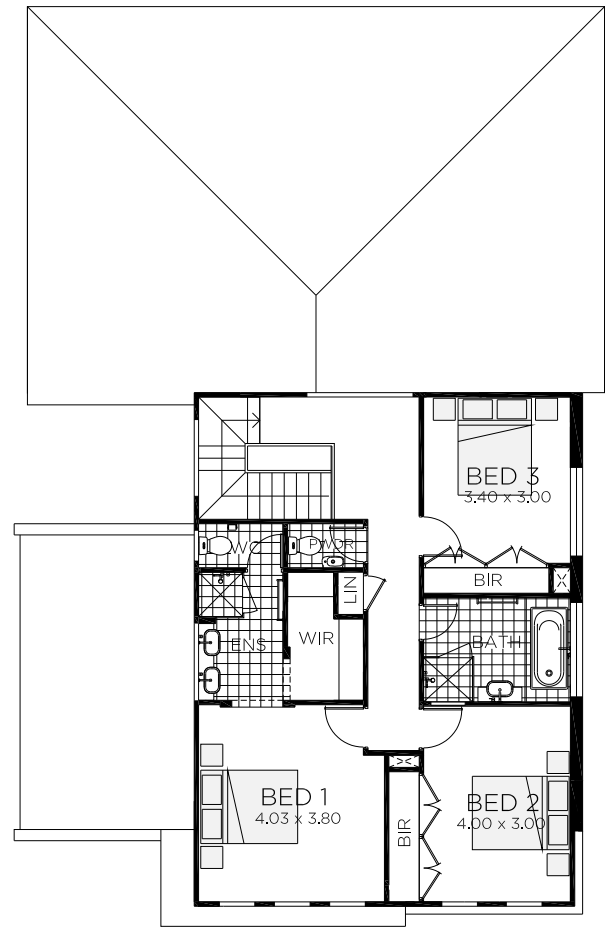
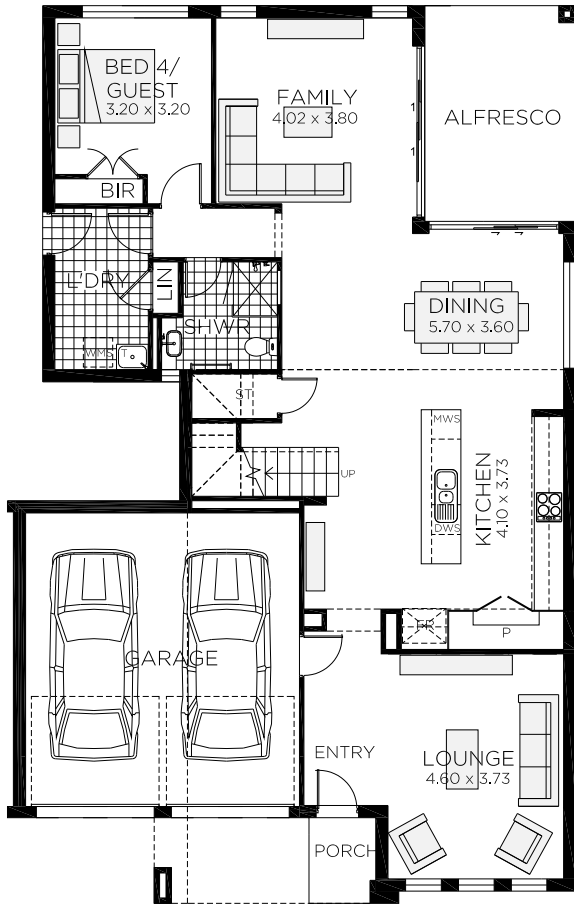
 2.5 bathrooms

 2 car spaces


 29.3 sq


Double garage fits: **13.52M** wide standard lot.


Ground Floor Living	119.64m <sup>2</sup>	Overall Width Double Garage	11.620m
First Floor Living	98.91m <sup>2</sup>	Overall Length	18.350m
Garage	37.96m <sup>2</sup>		
Porch	2.33m <sup>2</sup>		
Alfresco	13.07m <sup>2</sup>		
Total	271.91m <sup>2</sup>		



# Kymira 29 MKII

 4 bedrooms

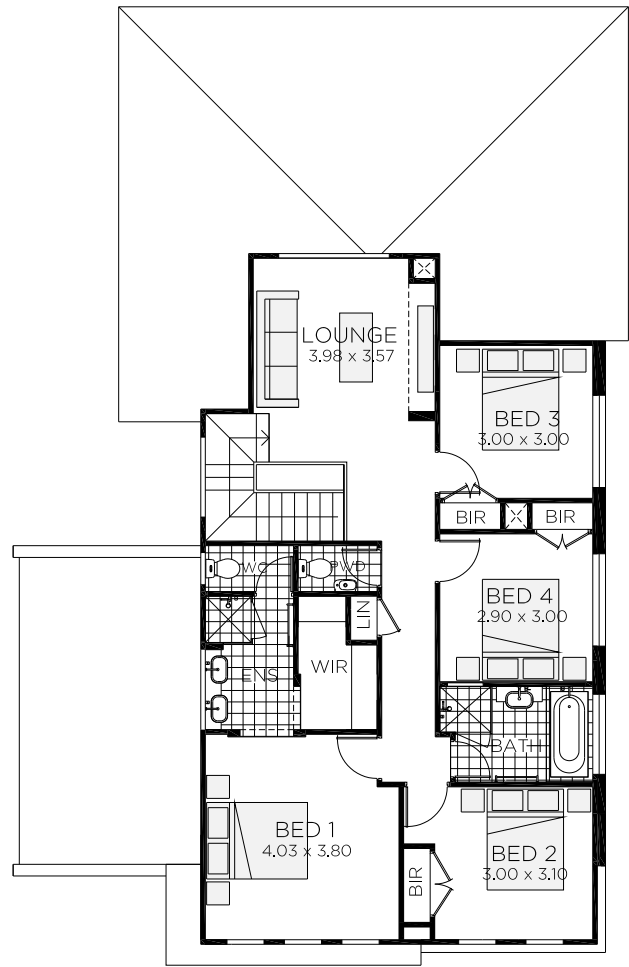
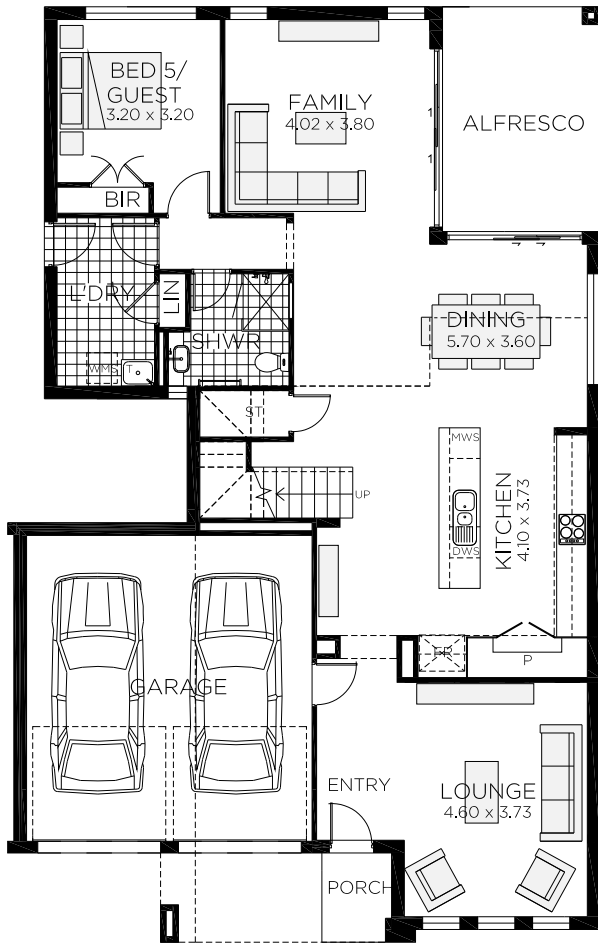
 3 bathrooms

 2 car spaces





 29.1 sq

Double garage fits: **13.52M** wide standard lot.

Ground Floor Living	132.92m <sup>2</sup>	Overall Width Double Garage	11.620m
First Floor Living	83.94m <sup>2</sup>	Overall Length	18.350m
Garage	37.96m <sup>2</sup>		
Porch	2.33m <sup>2</sup>		
Alfresco	13.62m <sup>2</sup>		
Total	270.77m <sup>2</sup>		

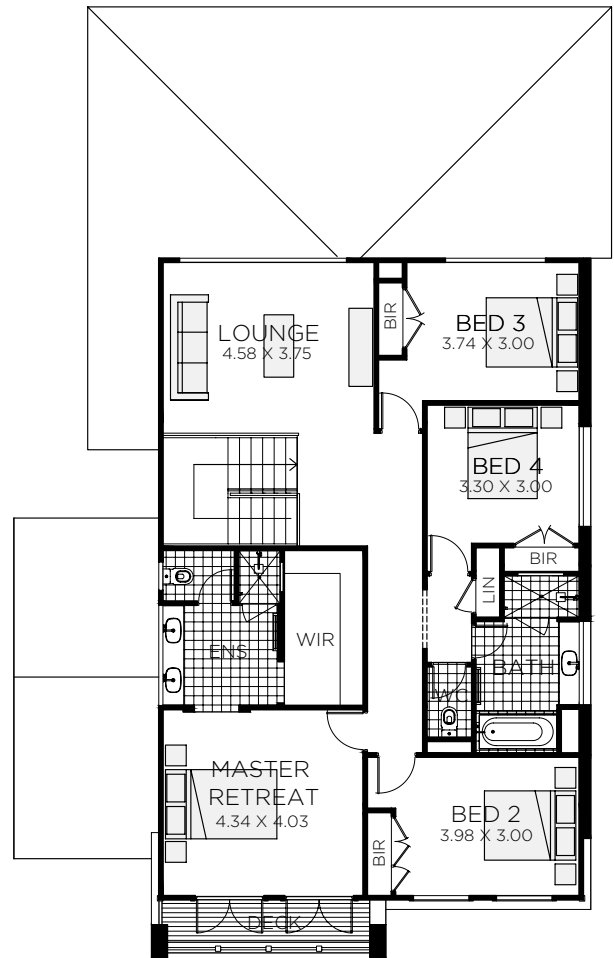


# Kymira 31


-  5 bedrooms
-  3 bathrooms
-  2 car spaces
-  30.75 sq


Double garage fits: **13.52M** wide standard lot.


Ground Floor Living	132.92m <sup>2</sup>	Overall Width Double Garage	11.620m
First Floor Living	98.91m <sup>2</sup>	Overall Length	18.350m
Garage	37.96m <sup>2</sup>		
Porch	2.33m <sup>2</sup>		
Alfresco	13.62m <sup>2</sup>		
Total	285.74m <sup>2</sup>		



# Kymira 36

 4 bedrooms

 2.5 bathrooms

 2 car spaces

 36.4 sq

Double garage fits: **14.40M** wide standard lot.

Ground Floor Living	146.63m <sup>2</sup>	Overall Width Double Garage	12.500m
First Floor Living	133.90m <sup>2</sup>	Overall Length	19.165m
Garage	37.81m <sup>2</sup>		
Porch	2.18m <sup>2</sup>		
Alfresco	17.60m <sup>2</sup>		
Total	346.66m <sup>2</sup>		