



# Novera

The Novera's kitchen is its focal point, blending easily into the living, dining and alfresco areas. With five facade options and several floor plans the Novera lets you create the perfect home to suit your family. An example of this modern home design is available for viewing at our Leppington display homes.

- ✔ Versatile family, lounge and study zones means you don't need to worry about the size of your guest list
- ✔ Enjoy the sense of luxury with a grand staircase that leads up to a bright, open lounge area
- ✔ Customise this design to your style with a range of facade options, including the contemporary Elite or on-trend Hamptons

#### Suitable for

- ▶ Extended family
- ▶ Knockdown rebuild

#### 📍 On Display

**Novera 34 Elite facade** on display at HomeWorld Leppington

Disclaimer: Photographs, artist impressions and other pictures in this brochure/book may show fixtures, fittings or finishes (render as an example) which are not supplied by Rawson Homes, or which are only available in some Rawson Homes designs or when selected as inclusions above the standard inclusions for a particular design. This may include landscaping and outdoor items, floor coverings, furniture, kitchen, bathroom and light fittings and decorative items, which are shown as examples only. References to block size are based on a standard block which is up to 700m<sup>2</sup> with up to 1m fall across the block, "M" class soil classification, all services within boundaries, garage setback up to 5.5m from front boundary, even cut and fill. Please speak to a Rawson New Home Consultant to discuss detailed home pricing for different designs and inclusions. Builders Lic No. NSW 33493C. ACT 19936252B. ABN 67 053 733 841. ACN 053 733 841



**RAWSON  
HOMES**  
— EST 1978 —

# Facades

Novera



Classic



Elite



Hampton



Regal

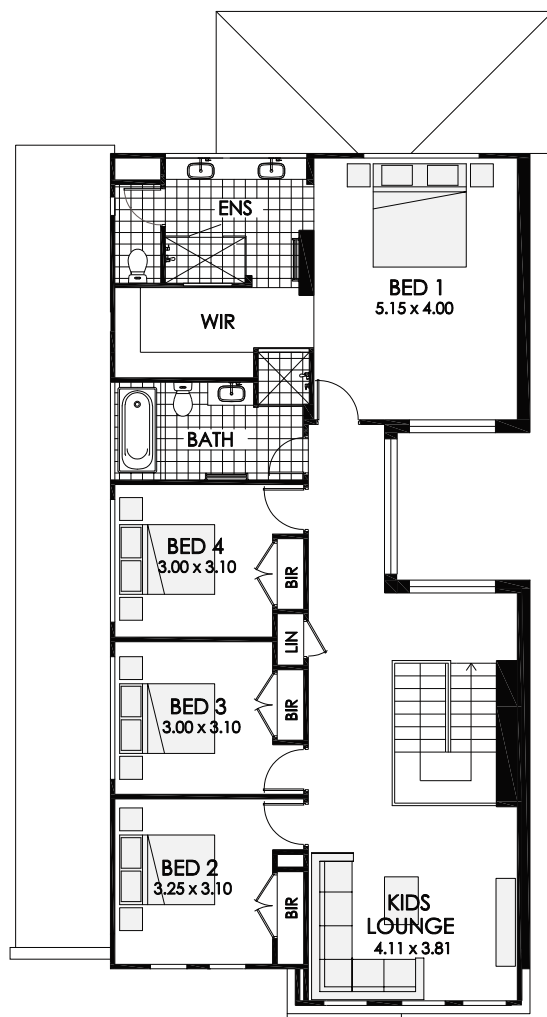
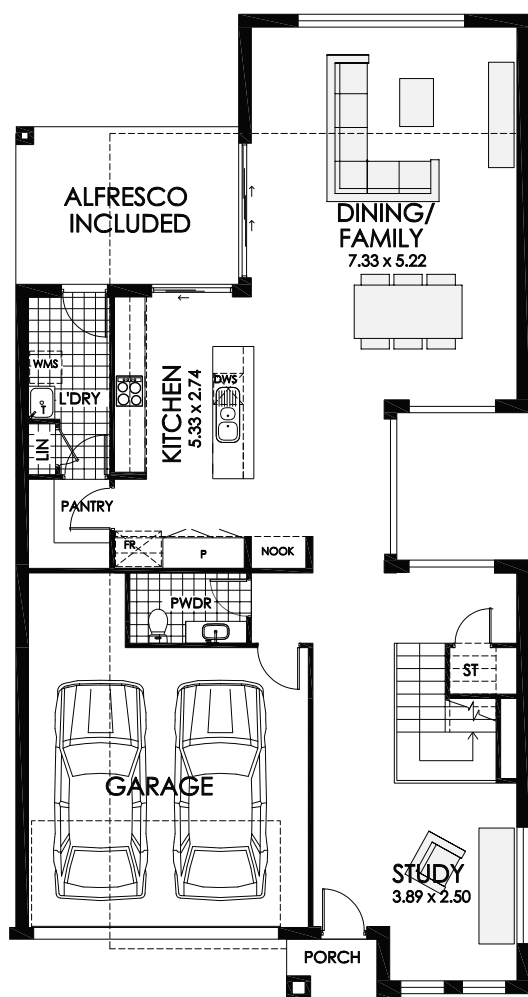


Trend


Disclaimer: Photographs, artist impressions and other pictures in this brochure/book may show fixtures, fittings or finishes (render as an example) which are not supplied by Rawson Homes, or which are only available in some Rawson Homes designs or when selected as inclusions above the standard inclusions for a particular design. This may include landscaping and outdoor items, floor coverings, furniture, kitchen, bathroom and light fittings and decorative items, which are shown as examples only. References to block size are based on a standard block which is up to 700m<sup>2</sup> with up to 1m fall across the block, "M" class soil classification, all services within boundaries, garage setback up to 5.5m from front boundary, even cut and fill. Please speak to a Rawson New Home Consultant to discuss detailed home pricing for different designs and inclusions. Builders Lic No. NSW 33493C. ACT 19936252B. ABN 67 053 733 841. ACN 053 733 841





**RAWSON  
HOMES**  
— EST 1978 —



# Novera 32

 4 bedrooms

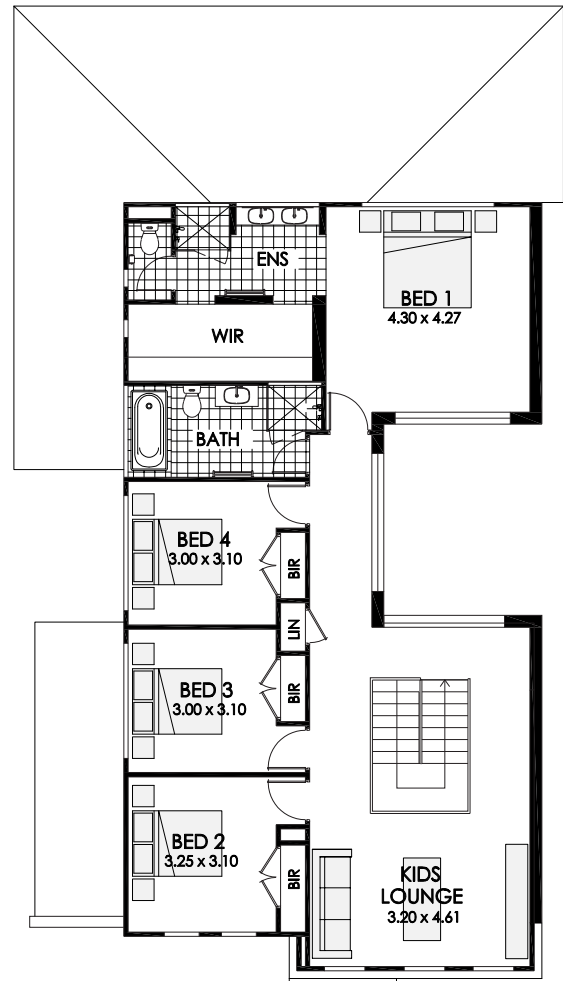
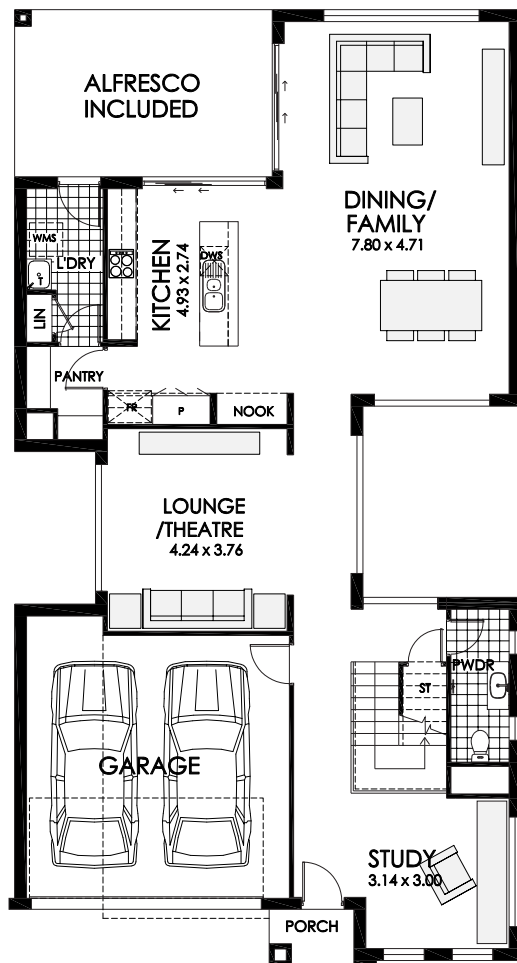
 2.5 bathrooms

 2 car spaces


 32.4 sq


Double garage fits: **12.00M** wide standard lot.


Ground Floor Living	119.97m <sup>2</sup>	Overall Width Double Garage	10.100m
First Floor Living	128.88m <sup>2</sup>	Overall Length	19.370m
Garage	36.11m <sup>2</sup>		
Porch	2.11m <sup>2</sup>		
Alfresco	13.69m <sup>2</sup>		
Total	300.76m <sup>2</sup>		



# Novera 34

 4 bedrooms

 2.5 bathrooms

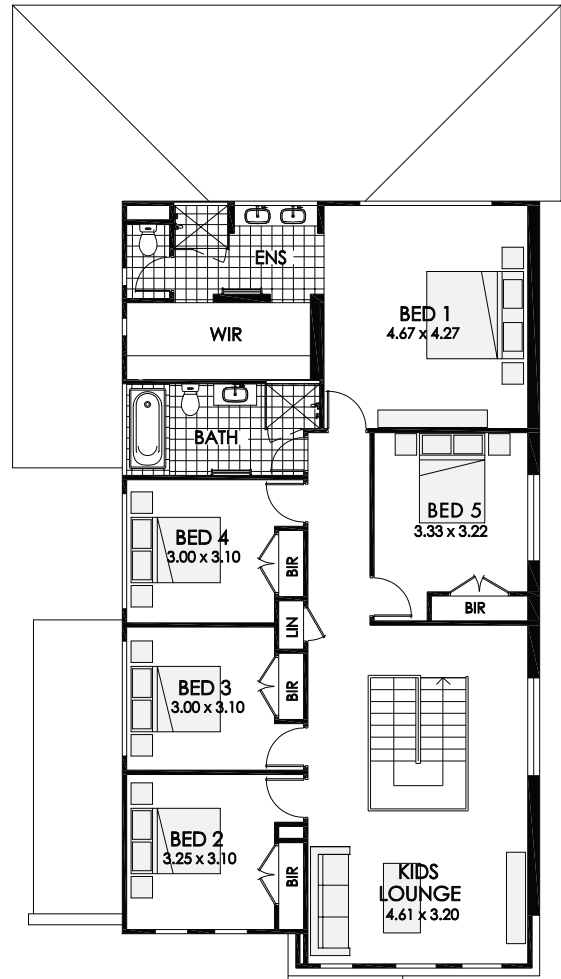
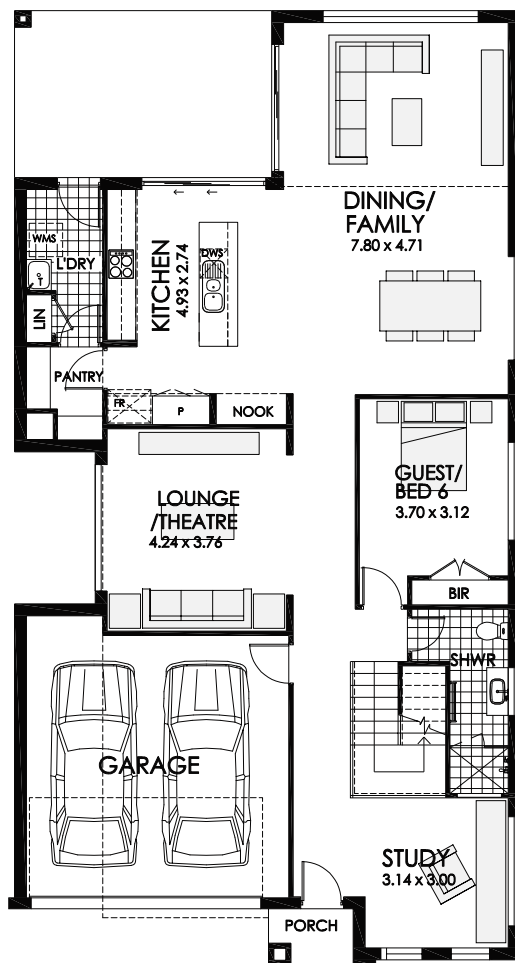
 2 car spaces

 33.5 sq


Double garage fits: **12.50M** wide standard lot.


Ground Floor Living	131.77m <sup>2</sup>	Overall Width Double Garage	10.600m
First Floor Living	126.26m <sup>2</sup>	Overall Length	20.020m
Garage	34.15m <sup>2</sup>		
Porch	2.11m <sup>2</sup>		
Alfresco	18.87m <sup>2</sup>		
Total	313.16m <sup>2</sup>		





# Novera 36

 6 bedrooms

 3 bathrooms

 2 car spaces

 36.5 sq

Double garage fits: **12.50M** wide standard lot.

Ground Floor Living	144.97m <sup>2</sup>	Overall Width Double Garage	10.600m
First Floor Living	139.04m <sup>2</sup>	Overall Length	20.020m
Garage	34.17m <sup>2</sup>		
Porch	2.11m <sup>2</sup>		
Alfresco	18.87m <sup>2</sup>		
Total	339.16m <sup>2</sup>		