



# Brookfield

With the Brookfield, the openness of the integrated kitchen, living, dining and alfresco areas is balanced by the calmness of the four bedrooms including a large master bedroom at the front of the home.

- ✔ Four generously sized bedrooms so that everyone can have their own space
- ✔ Separate lounge or theatre, perfect for movie nights
- ✔ Option to have a study or a workshop for your side projects, depending on floor plan size

## Suitable for

- ▶ Knockdown rebuild



# Facades

Brookfield



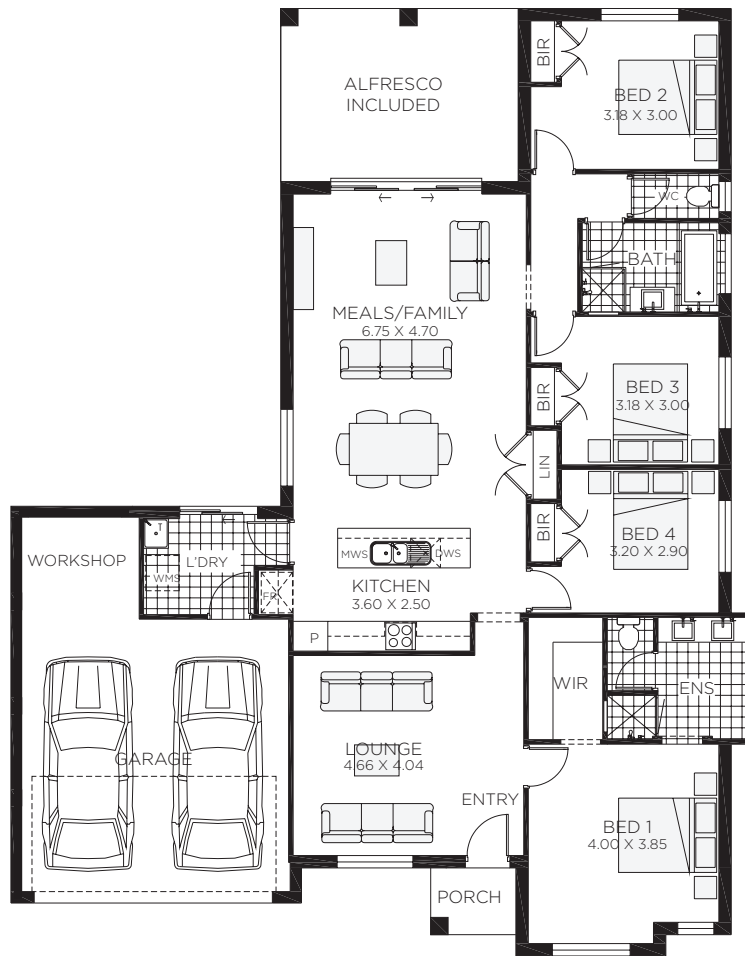
Classic




Majestic





Vogue



# Brookfield 23

 4 bedrooms

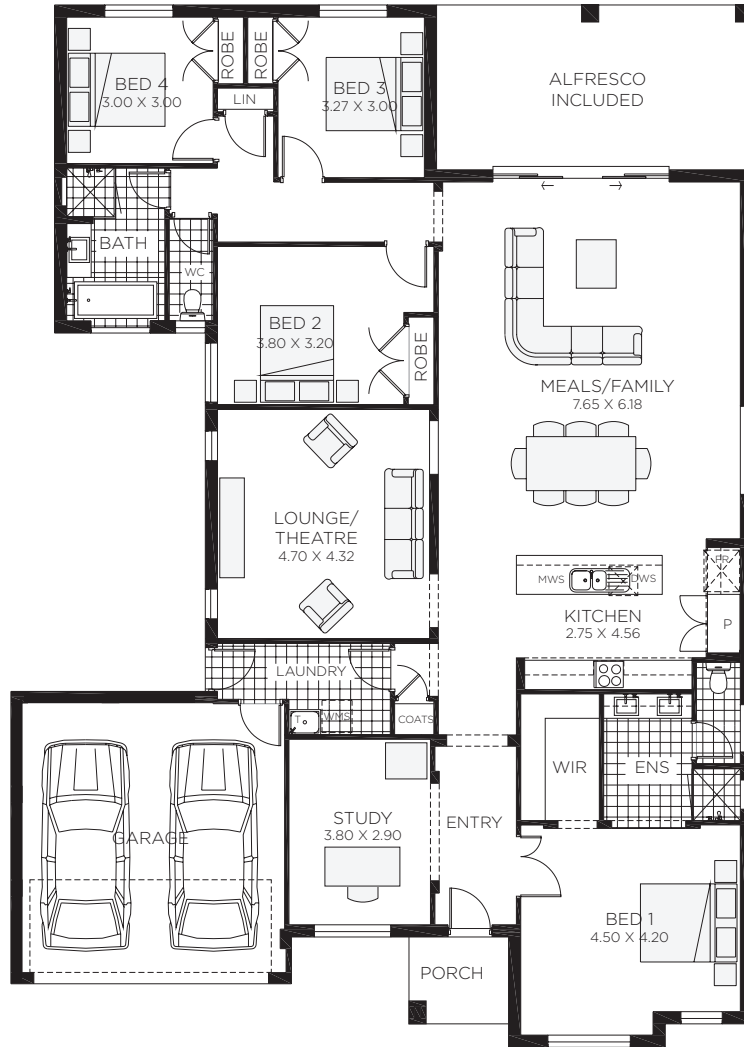
 2 bathrooms

 2 car spaces





 22.9 sq

Double garage fits: **16.88M** wide standard lot.

|                     |                      |                             |         |
|---------------------|----------------------|-----------------------------|---------|
| Ground Floor Living | 155.20m <sup>2</sup> | Overall Width Double Garage | 14.980m |
| Garage              | 38.26m <sup>2</sup>  | Overall Length              | 19.140m |
| Porch               | 2.32m <sup>2</sup>   |                             |         |
| Alfresco            | 16.80m <sup>2</sup>  |                             |         |
| Total               | 212.58m <sup>2</sup> |                             |         |

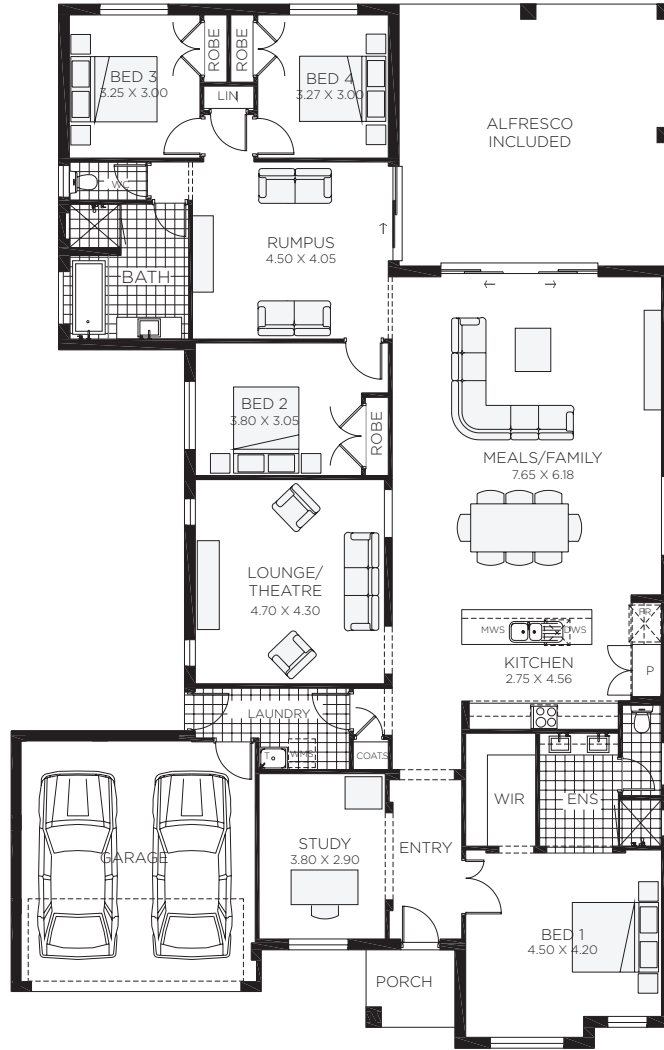


# Brookfield 30


-  4 bedrooms
-  2 bathrooms
-  2 car spaces
-  29.6 sq


Double garage fits: **17.10M** wide standard lot.


|                     |                      |                             |         |
|---------------------|----------------------|-----------------------------|---------|
| Ground Floor Living | 215.11m <sup>2</sup> | Overall Width Double Garage | 15.200m |
| Garage              | 34.11m <sup>2</sup>  | Overall Length              | 21.360m |
| Porch               | 3.63m <sup>2</sup>   |                             |         |
| Alfresco            | 21.88m <sup>2</sup>  |                             |         |
| Total               | 274.93m <sup>2</sup> |                             |         |




# Brookfield 33

 4 bedrooms

 2 bathrooms

 2 car spaces

 33.0 sq

Double garage fits: **17.10M** wide standard lot.

|                     |                      |                             |         |
|---------------------|----------------------|-----------------------------|---------|
| Ground Floor Living | 231.69m <sup>2</sup> | Overall Width Double Garage | 15.200m |
| Garage              | 33.33m <sup>2</sup>  | Overall Length              | 24.000m |
| Porch               | 4.61m <sup>2</sup>   |                             |         |
| Alfresco            | 37.80m <sup>2</sup>  |                             |         |
| Total               | 307.43m <sup>2</sup> |                             |         |