



# Huntley

The striking exterior aspect and flexible floorplan, has made this stylish home one of our most popular designs. Suiting larger families with options to add on additional bedrooms for extended families the Huntley's grand proportions allow everyone to create their own space.

- ✔ Award winning design that takes care of all your family's needs
- ✔ Open plan family and dining area so you can enjoy dinner while you relax over a movie
- ✔ Enjoy 'me-time' in the resort style master bedroom with ensuite and walk-in robe
- ✔ Relax with your favourite book in the peaceful lounge room at the front of the home

## Suitable for

- ▶ Narrow lots
- ▶ Extended family
- ▶ Knockdown rebuild

## 📍 On Display

**Huntley 32 with Statesman facade** on display at Willowdale

Disclaimer: Photographs, artist impressions and other pictures in this brochure/book may show fixtures, fittings or finishes (render as an example) which are not supplied by Rawson Homes, or which are only available in some Rawson Homes designs or when selected as inclusions above the standard inclusions for a particular design. This may include landscaping and outdoor items, floor coverings, furniture, kitchen, bathroom and light fittings and decorative items, which are shown as examples only. References to block size are based on a standard block which is up to 700m<sup>2</sup> with up to 1m fall across the block, "M" class soil classification, all services within boundaries, garage setback up to 5.5m from front boundary, even cut and fill. Please speak to a Rawson New Home Consultant to discuss detailed home pricing for different designs and inclusions. Builders Lic No. NSW 33493C. ACT 19936252B. ABN 67 053 733 841. ACN 053 733 841



**RAWSON  
HOMES**  
— EST 1978 —



Elite



Classic



Hampton



Majestic



Regal



Statesman



Traditional

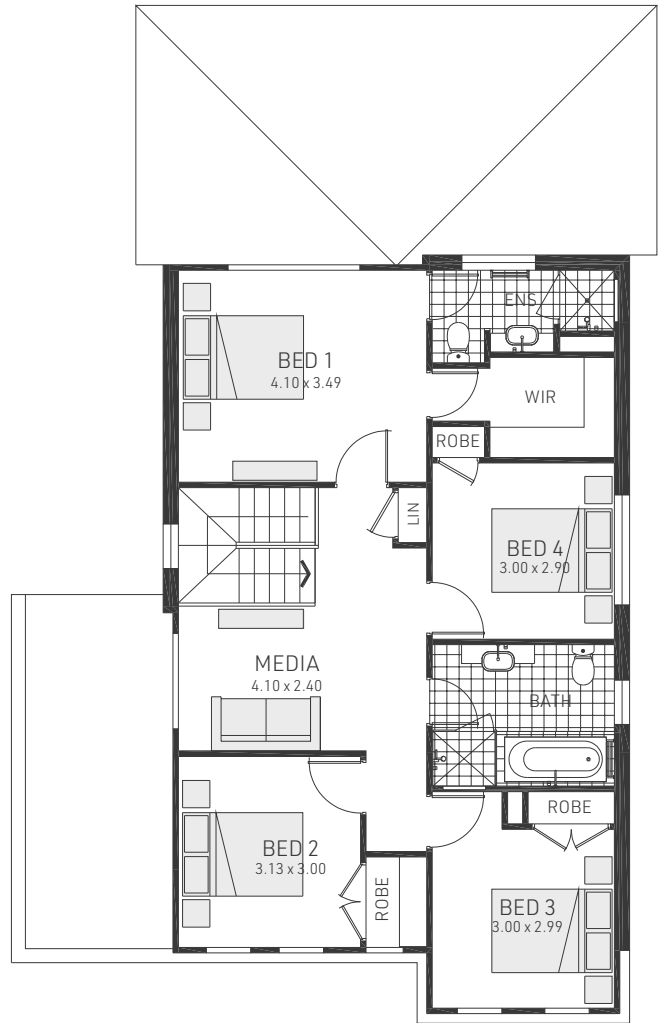
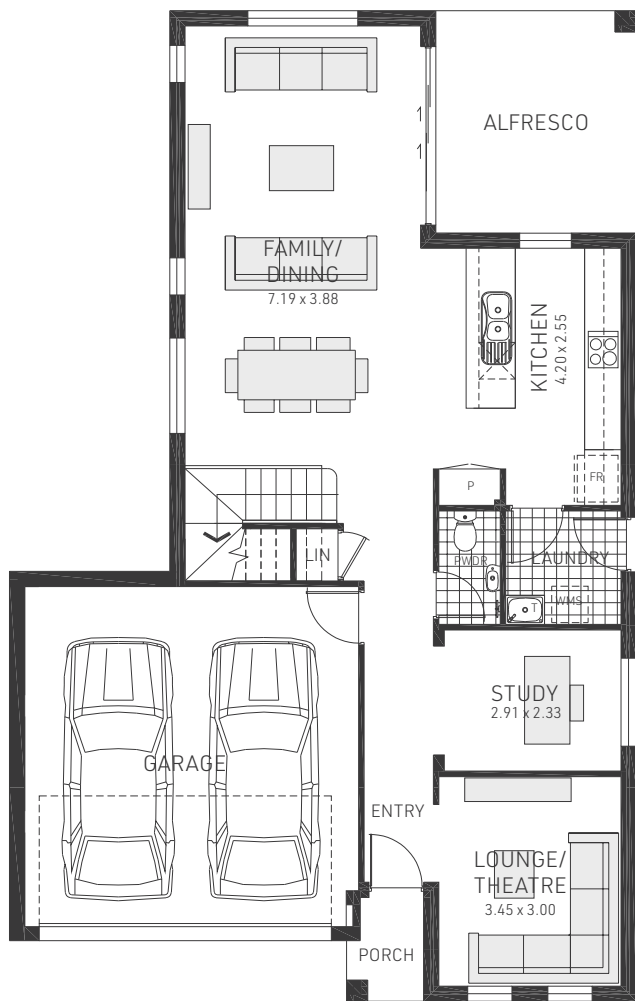


Trend





Vogue


Disclaimer: Photographs, artist impressions and other pictures in this brochure/book may show fixtures, fittings or finishes (render as an example) which are not supplied by Rawson Homes, or which are only available in some Rawson Homes designs or when selected as inclusions above the standard inclusions for a particular design. This may include landscaping and outdoor items, floor coverings, furniture, kitchen, bathroom and light fittings and decorative items, which are shown as examples only. References to block size are based on a standard block which is up to 700m<sup>2</sup> with up to 1m fall across the block, "M" class soil classification, all services within boundaries, garage setback up to 5.5m from front boundary, even cut and fill. Please speak to a Rawson New Home Consultant to discuss detailed home pricing for different designs and inclusions. Builders Lic No. NSW 33493C. ACT 19936252B. ABN 67 053 733 841. ACN 053 733 841




# Huntley 24

 4 bedrooms

 2.5 bathrooms

 2 car spaces

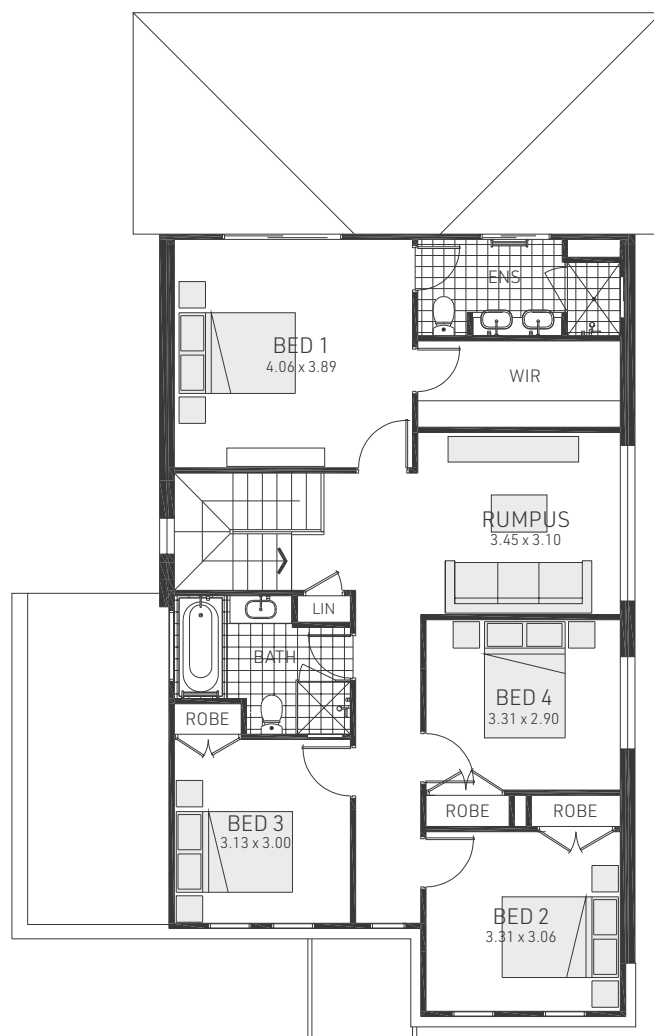
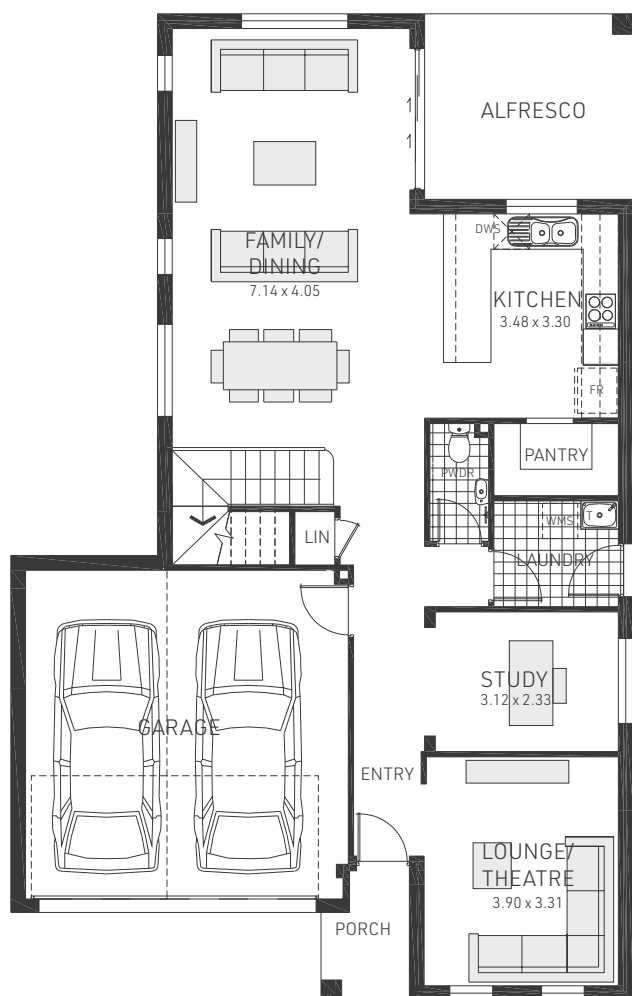
 24.5 sq

Single garage fits: **9.60M** wide standard lot.


Double garage fits: **11.25M** wide zero lot.  
**12.10M** wide standard lot.


Ground Floor Living	90.10m <sup>2</sup>	Overall Width Single Garage	7.680m
First Floor Living	90.66m <sup>2</sup>	Overall Width Double Garage	10.180m
Garage	33.30m <sup>2</sup>	Overall Length	16.310m
Porch	2.01m <sup>2</sup>		
Alfresco	12.08m <sup>2</sup>		
Total	228.15m <sup>2</sup>		






# Huntley 27

 4 bedrooms

 2.5 bathrooms

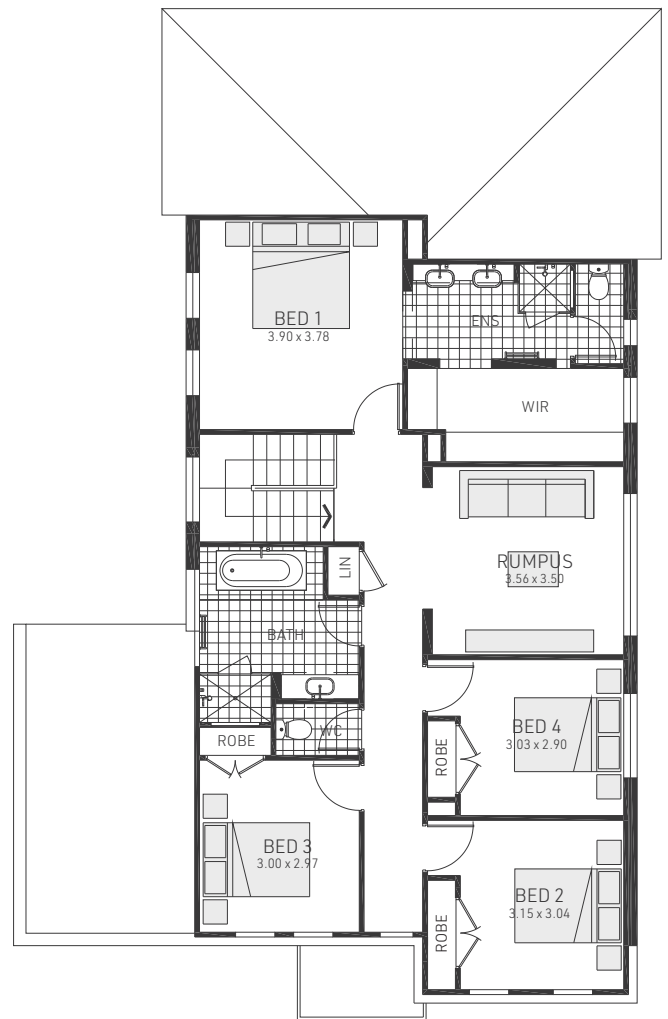
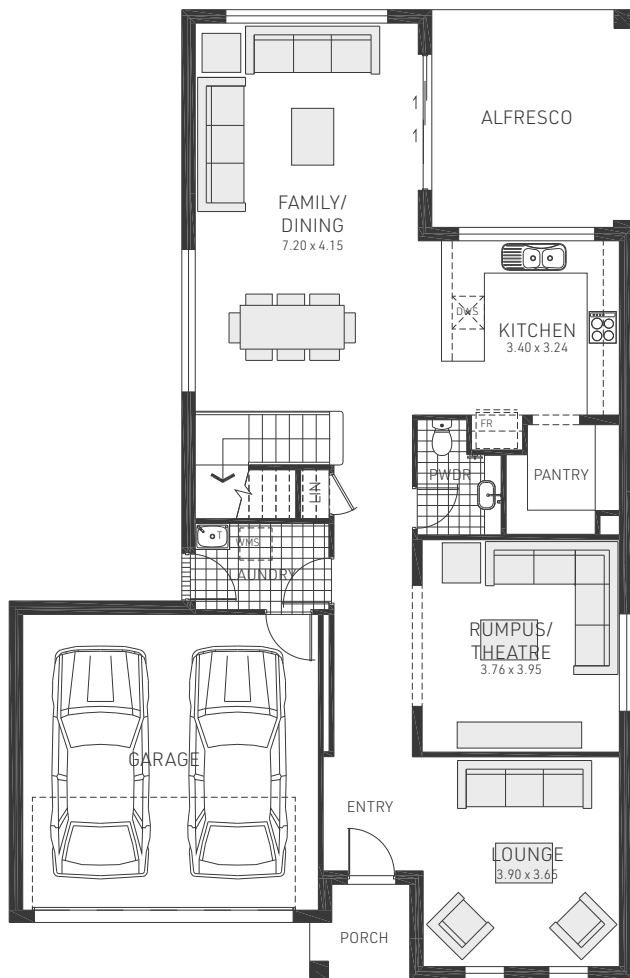
 2 car spaces

 26.8 sq


Single garage fits: **10.00M** wide standard lot.


Double garage fits: **11.73M** wide zero lot.  
**12.50M** wide standard lot.


Ground Floor Living	99.85m <sup>2</sup>	Overall Width Single Garage	8.100m
First Floor Living	102.14m <sup>2</sup>	Overall Width Double Garage	10.600m
Garage	32.82m <sup>2</sup>	Overall Length	16.810m
Porch	2.77m <sup>2</sup>		
Alfresco	11.22m <sup>2</sup>		
Total	248.80m <sup>2</sup>		



# Huntley 30

 4 bedrooms

 2.5 bathrooms

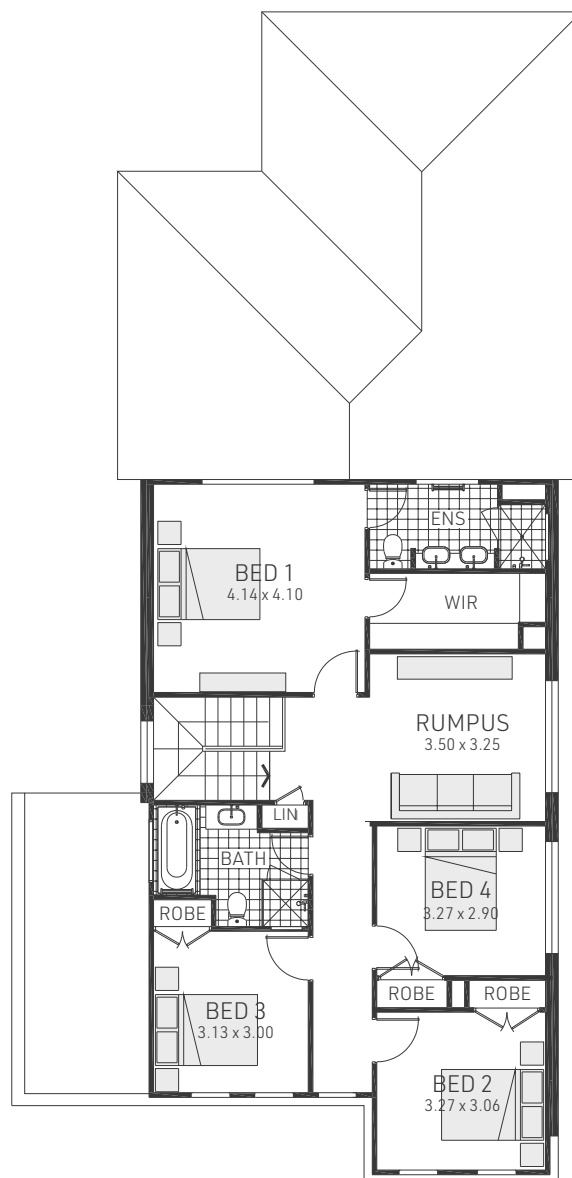
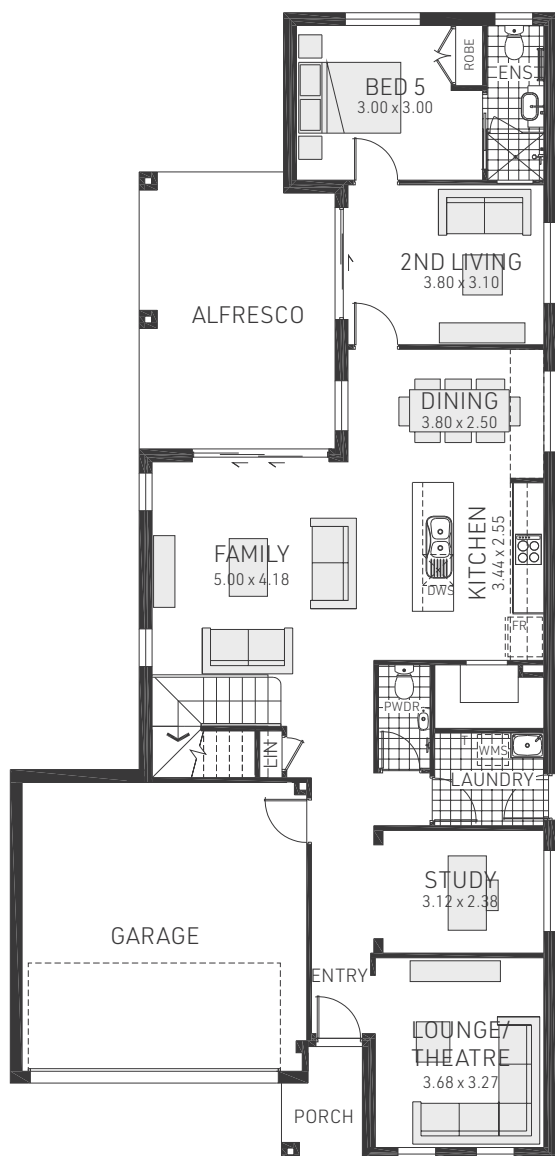
 2 car spaces

 30.4 sq


Single garage fits: **10.90M** wide standard lot.


Double garage fits: **12.73M** wide zero lot.  
**13.50M** wide standard lot.


Ground Floor Living	115.99m <sup>2</sup>	Overall Width Single Garage	9.000m
First Floor Living	114.26m <sup>2</sup>	Overall Width Double Garage	11.600m
Garage	33.92m <sup>2</sup>	Overall Length	18.050m
Porch	3.02m <sup>2</sup>		
Alfresco	15.15m <sup>2</sup>		
Total	282.34m <sup>2</sup>		



# Huntley 31

 5 bedrooms

 3.5 bathrooms

 2 car spaces

 30.8 sq


Single garage fits: **10.00M** wide standard lot.


Double garage fits: **11.73M** wide zero lot.  
**12.50M** wide standard lot.


Ground Floor Living	126.46m <sup>2</sup>	Overall Width Single Garage	8.100m
First Floor Living	103.26m <sup>2</sup>	Overall Width Double Garage	10.600m
Garage	33.29m <sup>2</sup>	Overall Length	22.260m
Porch	2.89m <sup>2</sup>		
Alfresco	19.99m <sup>2</sup>		
Total	285.89m <sup>2</sup>		




# Huntley 32

 4 bedrooms

 2.5 bathrooms

 2 car spaces

 31.9 sq

Double garage fits: **12.23M** wide zero lot.  
**13.00M** wide standard lot.

Ground Floor Living	118.94m <sup>2</sup>	Overall Width Double Garage	11.100m
First Floor Living	129.13m <sup>2</sup>	Overall Length	18.050m
Garage	33.30m <sup>2</sup>		
Porch	1.84m <sup>2</sup>		
Alfresco	13.38m <sup>2</sup>		
Total	296.59m <sup>2</sup>		