



# Mayfield

The Mayfield is a cleverly designed home made to complement 7.5 metre 'wide' blocks while giving a sense of spaciousness. The porch welcomes you into the home and leads you to the kitchen, living, dining and entertaining areas, which are integrated at the back to capture light and create an airy indoor-outdoor feel. Discover our latest Hamptons styled Mayfield III at Homeworld Leppington.

- ✔ Separate study at the front lets you get things done in peace
- ✔ Entertain the way you like in the combined kitchen, living and dining areas that open up onto the alfresco space
- ✔ Upstairs media room for hosting movie and game nights
- ✔ Mayfield III design is available with an attached two bedroom granny flat, perfect for when the kids want their own space or for renting out

## Suitable for

- ▶ Narrow lots
- ▶ Extended family
- ▶ Knockdown rebuild

## 📍 On Display

**Mayfield III Hampton facade with attached Granny Flat** on display at HomeWorld Leppington

Disclaimer: Photographs, artist impressions and other pictures in this brochure/book may show fixtures, fittings or finishes (render as an example) which are not supplied by Rawson Homes, or which are only available in some Rawson Homes designs or when selected as inclusions above the standard inclusions for a particular design. This may include landscaping and outdoor items, floor coverings, furniture, kitchen, bathroom and light fittings and decorative items, which are shown as examples only. References to block size are based on a standard block which is up to 700m<sup>2</sup> with up to 1m fall across the block, "M" class soil classification, all services within boundaries, garage setback up to 5.5m from front boundary, even cut and fill. Please speak to a Rawson New Home Consultant to discuss detailed home pricing for different designs and inclusions. Builders Lic No. NSW 33493C. ACT 19936252B. ABN 67 053 733 841. ACN 053 733 841



**RAWSON  
HOMES**  
— EST 1978 —



Classic



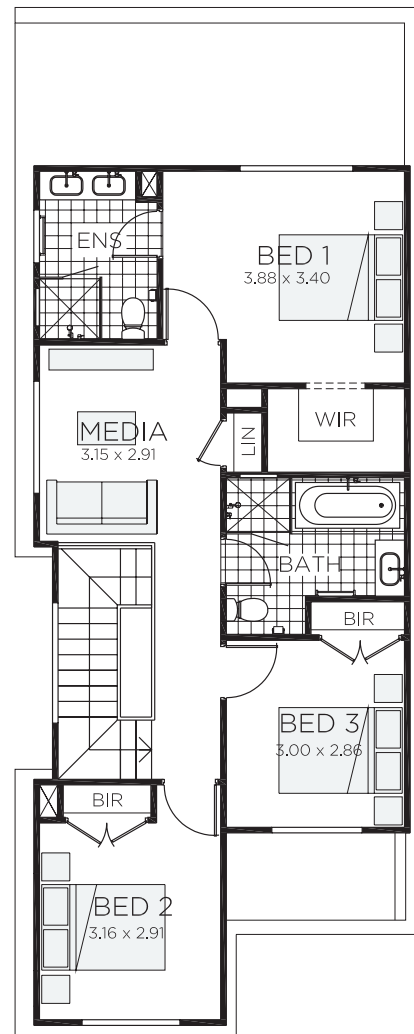
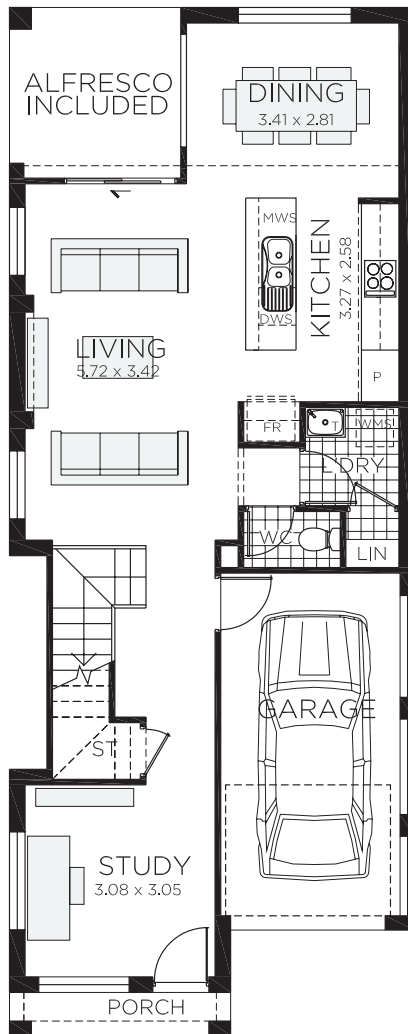
Hampton




Regal





Vogue



# Mayfield II 19

 3 bedrooms

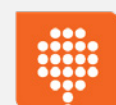
 2.5 bathrooms

 1 car spaces

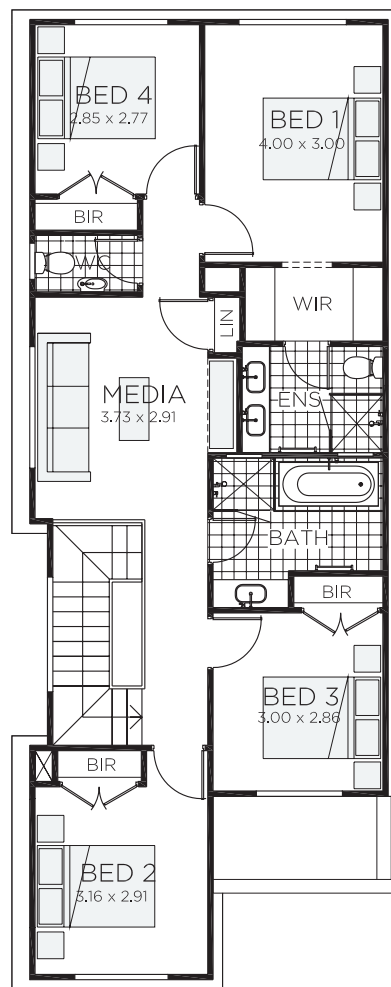
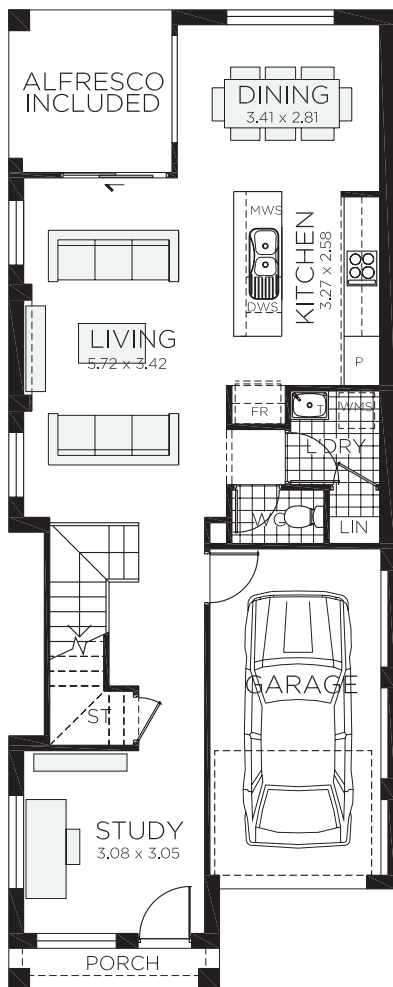
 19.2 sq

Single garage fits: **7.50M** wide zero lot.  
**8.40M** wide standard lot.


Ground Floor Living	72.40m <sup>2</sup>	Overall Width Single Garage	6.500m
First Floor Living	78.84m <sup>2</sup>	Overall Length	16.500m
Garage	17.82m <sup>2</sup>		
Porch	2.45m <sup>2</sup>		
Alfresco	7.53m <sup>2</sup>		
Total	179.04m <sup>2</sup>		





**RAWSON  
HOMES**  
— EST 1978 —



# Mayfield II 21

 4 bedrooms

 2.5 bathrooms

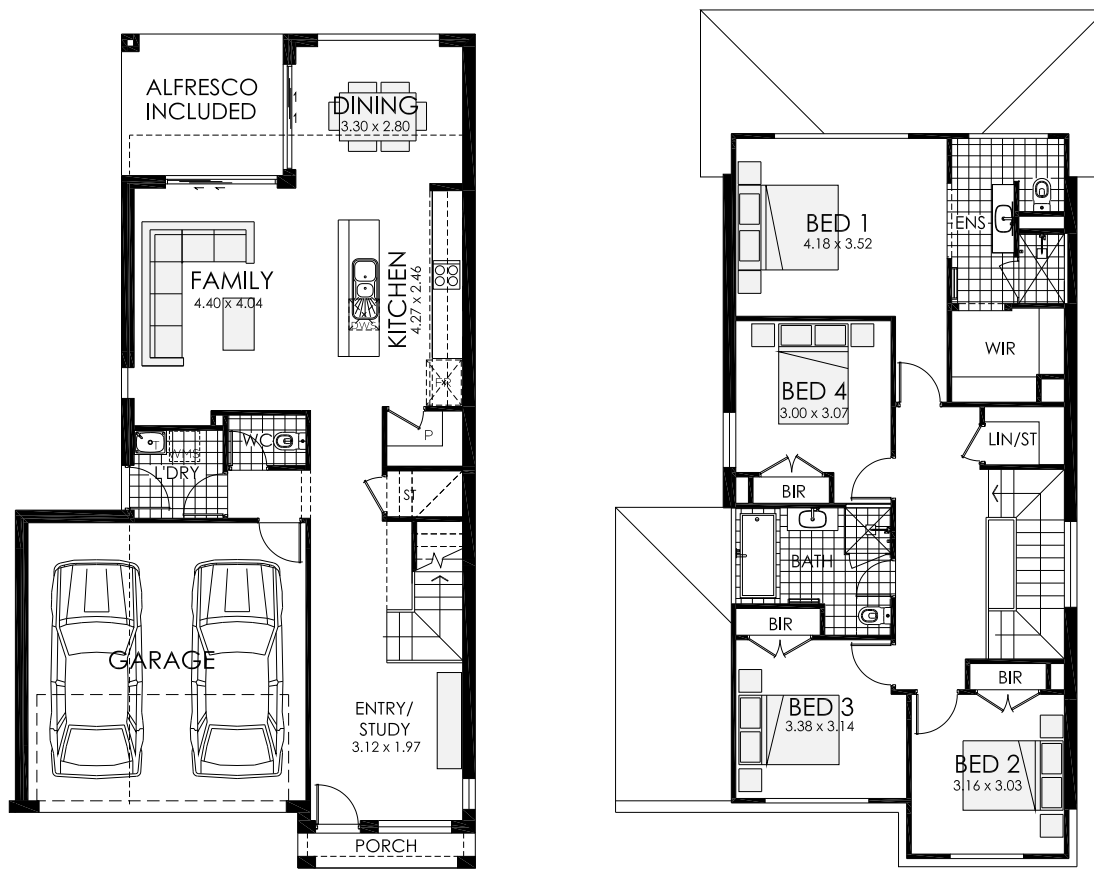
 1 car spaces

 21.0 sq


Single garage fits: **7.50M** wide zero lot.  
**8.40M** wide standard lot.


Ground Floor Living	72.40m <sup>2</sup>	Overall Width Single Garage	6.500m
First Floor Living	95.35m <sup>2</sup>	Overall Length	16.500m
Garage	17.82m <sup>2</sup>		
Porch	2.45m <sup>2</sup>		
Alfresco	7.53m <sup>2</sup>		
Total	195.55m <sup>2</sup>		






# Mayfield III

 4 bedrooms

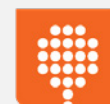
 2.5 bathrooms

 2 car spaces

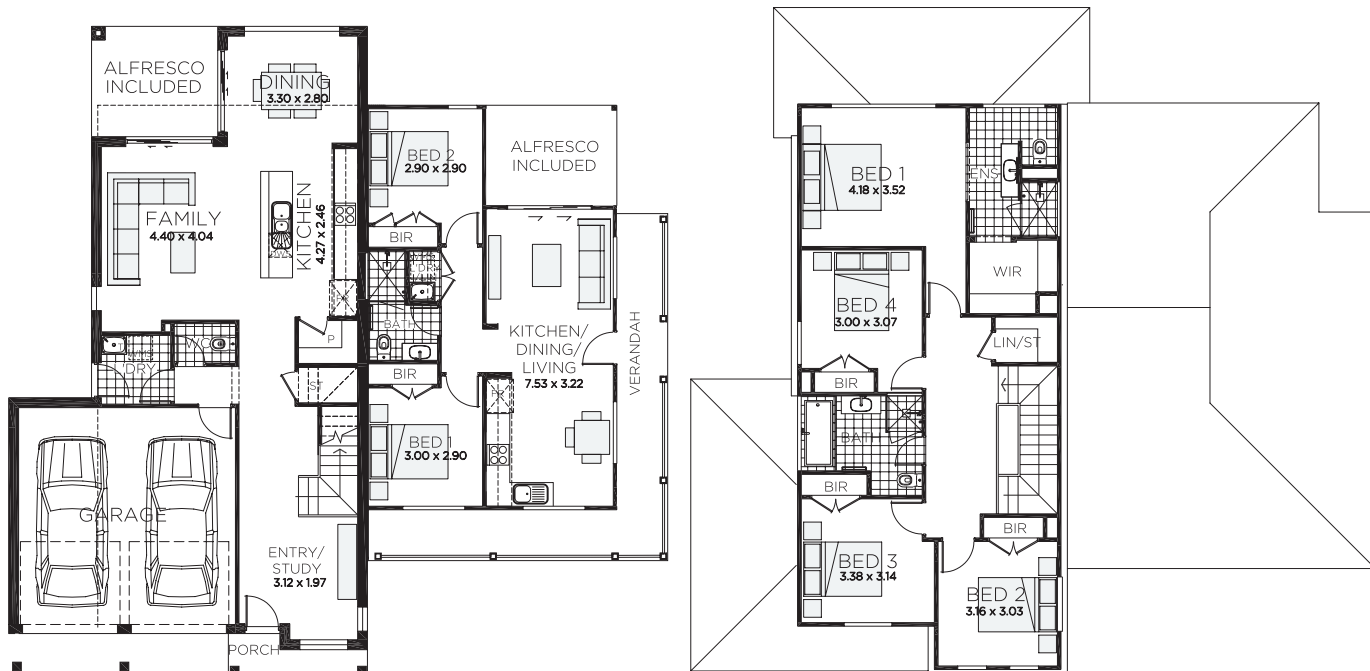
 23.7 sq

Double garage fits: **11.00M** wide standard lot.

Ground Floor Living	79.40m <sup>2</sup>	Overall Width Double Garage	9.100m
First Floor Living	96.44m <sup>2</sup>	Overall Length	16.500m
Garage	33.44m <sup>2</sup>		
Porch	2.42m <sup>2</sup>		
Alfresco	8.96m <sup>2</sup>		
Total	220.66m <sup>2</sup>		





**RAWSON  
HOMES**  
— EST 1978 —




# Mayfield |||

with Granny Flat

 6 bedrooms

 3.5 bathrooms

 2 car spaces

 32.8 sq

Double garage fits: **18.60M** wide standard lot.

Ground Floor Living	135.71m <sup>2</sup>	Overall Width Double Garage	16.715m
First Floor Living	96.58m <sup>2</sup>	Overall Length	16.500m
Garage	33.43m <sup>2</sup>		
Porch	2.42m <sup>2</sup>		
Alfresco	17.41m <sup>2</sup>		
Total	305.04m <sup>2</sup>		