



# Metford

The Metford uses natural lighting to create a sense of luxury and openness. The entry hallway flows past the master suite and into the spacious living zones, which are perfect for entertaining. See this modern home design in person at the Southern Highlands display home.

- ✔ Indulge your inner master chef in the large kitchen and pantry space
- ✔ Enjoy well-earned 'me-time' in the master suite with spacious ensuite and walk-in robe
- ✔ Four spacious bedrooms will give your family room to grow
- ✔ Available in a range of sizes to suit a selection of block sizes

## Suitable for

- ▶ Knockdown rebuild

## 📍 On Display

**Metford 26 Coastal facade** on display at Calderwood Valley  
**Metford 26 Aspire facade** on display at Googong

Disclaimer: Photographs, artist impressions and other pictures in this brochure/book may show fixtures, fittings or finishes (render as an example) which are not supplied by Rawson Homes, or which are only available in some Rawson Homes designs or when selected as inclusions above the standard inclusions for a particular design. This may include landscaping and outdoor items, floor coverings, furniture, kitchen, bathroom and light fittings and decorative items, which are shown as examples only. References to block size are based on a standard block which is up to 700m<sup>2</sup> with up to 1m fall across the block, "M" class soil classification, all services within boundaries, garage setback up to 5.5m from front boundary, even cut and fill. Please speak to a Rawson New Home Consultant to discuss detailed home pricing for different designs and inclusions. Builders Lic No. NSW 33493C. ACT 19936252B. ABN 67 053 733 841. ACN 053 733 841



**RAWSON  
HOMES**  
— EST 1978 —



# Facades

Metford



Aspire



Classic



Coastal



Majestic



Metro



Regal



Trend

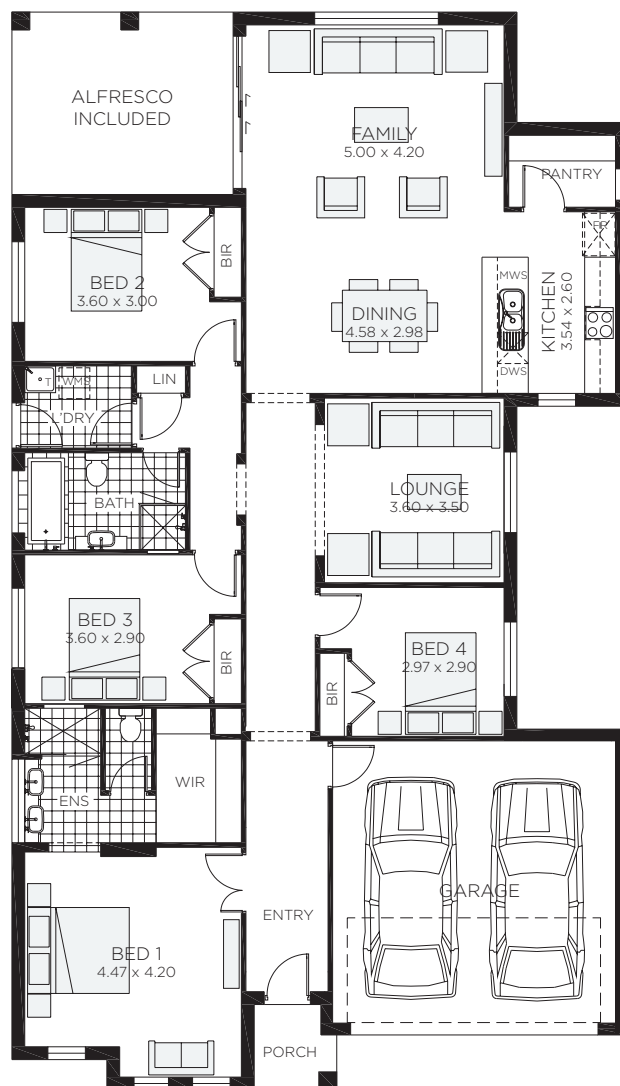


Vogue


Disclaimer: Photographs, artist impressions and other pictures in this brochure/book may show fixtures, fittings or finishes (render as an example) which are not supplied by Rawson Homes, or which are only available in some Rawson Homes designs or when selected as inclusions above the standard inclusions for a particular design. This may include landscaping and outdoor items, floor coverings, furniture, kitchen, bathroom and light fittings and decorative items, which are shown as examples only. References to block size are based on a standard block which is up to 700m<sup>2</sup> with up to 1m fall across the block, "M" class soil classification, all services within boundaries, garage setback up to 5.5m from front boundary, even cut and fill. Please speak to a Rawson New Home Consultant to discuss detailed home pricing for different designs and inclusions. Builders Lic No. NSW 33493C. ACT 19936252B. ABN 67 053 733 841. ACN 053 733 841





**RAWSON  
HOMES**  
— EST 1978 —



# Metford 24

 4 bedrooms

 2 bathrooms

 2 car spaces

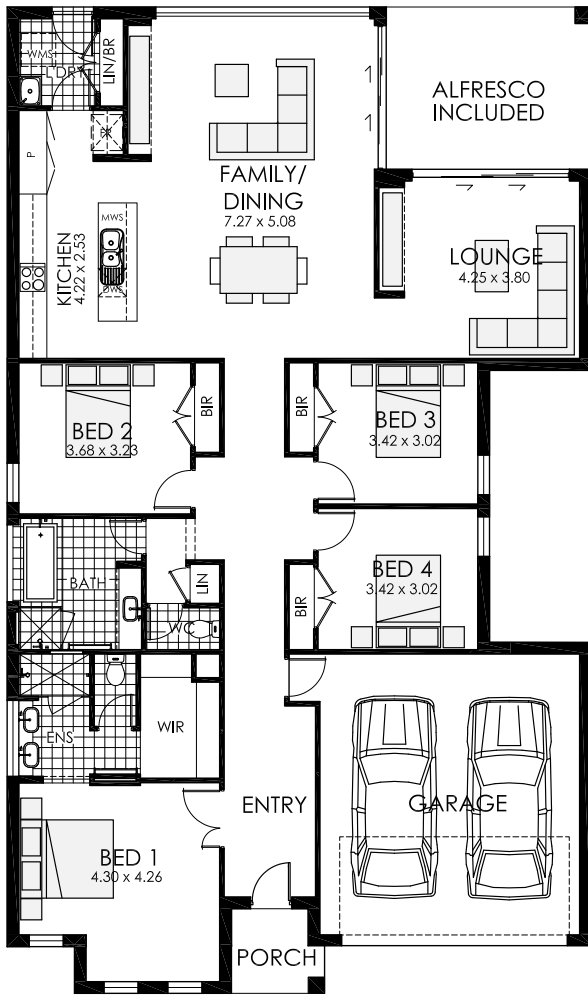
 24.4 sq

Double garage fits: **13.90M** wide standard lot.

|                     |                      |                             |         |
|---------------------|----------------------|-----------------------------|---------|
| Ground Floor Living | 175.23m <sup>2</sup> | Overall Width Double Garage | 12.010m |
| Garage              | 33.64m <sup>2</sup>  | Overall Length              | 21.000m |
| Porch               | 2.49m <sup>2</sup>   |                             |         |
| Alfresco            | 15.32m <sup>2</sup>  |                             |         |
| Total               | 226.68m <sup>2</sup> |                             |         |





**RAWSON  
HOMES**  
— EST 1978 —




REAR MIRROR REVERSE OPTION

# Metford 26

 4 bedrooms

 2 bathrooms

 2 car spaces

 26.2 sq

Double garage fits: **14.40M** wide standard lot.

|                     |                      |                             |         |
|---------------------|----------------------|-----------------------------|---------|
| Ground Floor Living | 187.57m <sup>2</sup> | Overall Width Double Garage | 12.500m |
| Garage              | 37.67m <sup>2</sup>  | Overall Length              | 21.100m |
| Porch               | 3.32m <sup>2</sup>   |                             |         |
| Alfresco            | 15.23m <sup>2</sup>  |                             |         |
| Total               | 243.79m <sup>2</sup> |                             |         |



# Metford 28

4 bedrooms

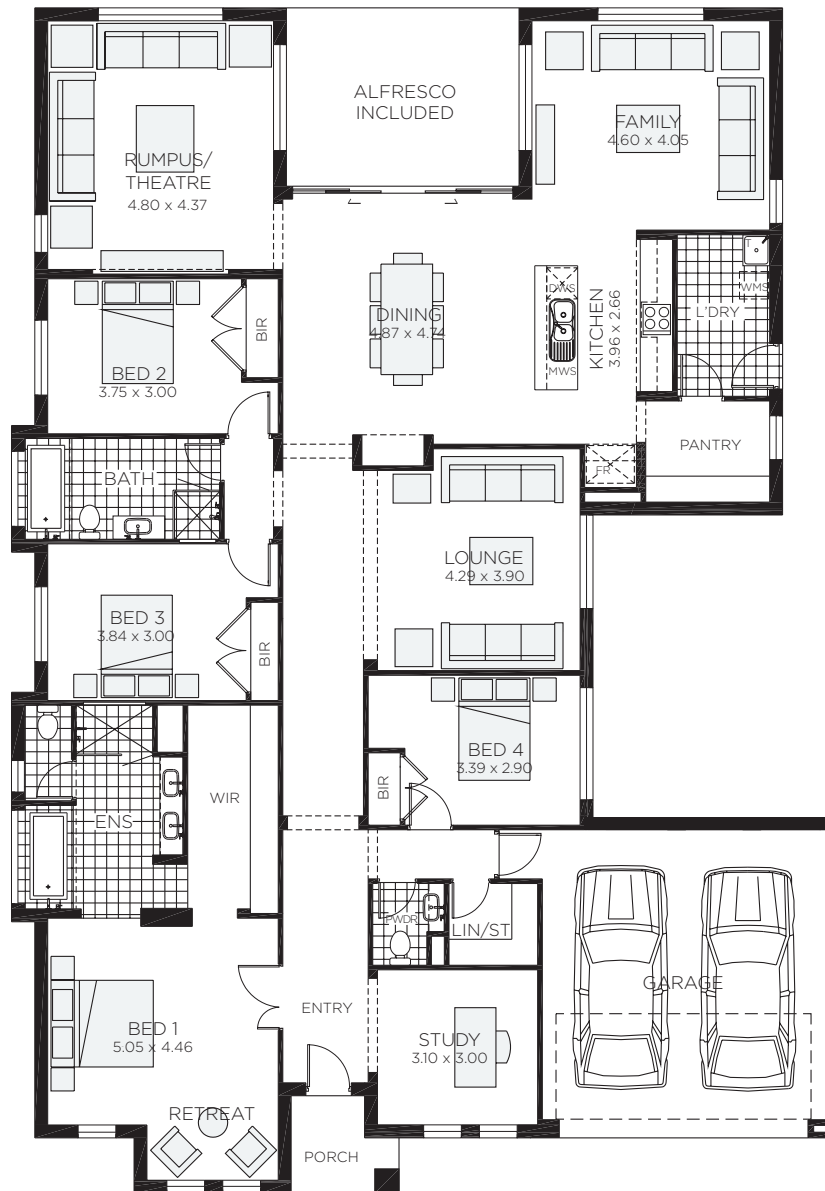
2 bathrooms

2 car spaces

28.7 sq

Double garage fits: **14.75M** wide standard lot.

|                     |                      |                             |         |
|---------------------|----------------------|-----------------------------|---------|
| Ground Floor Living | 215.03m <sup>2</sup> | Overall Width Double Garage | 12.850m |
| Garage              | 33.90m <sup>2</sup>  | Overall Length              | 24.300m |
| Porch               | 3.34m <sup>2</sup>   |                             |         |
| Alfresco            | 14.50m <sup>2</sup>  |                             |         |
| Total               | 266.77m <sup>2</sup> |                             |         |



# Metford 33

- 4 bedrooms
- 2 car spaces
- 2.5 bathrooms
- 33.3 sq

Double garage fits: **17.90M** wide standard lot.

|                     |                       |                             |         |
|---------------------|-----------------------|-----------------------------|---------|
| Ground Floor Living | 255.15m <sup>2</sup>  | Overall Width Double Garage | 16.000m |
| Garage              | 36.00m <sup>2</sup>   | Overall Length              | 22.930m |
| Porch               | 3.39m <sup>2</sup>    |                             |         |
| Alfresco            | 15.52m <sup>2</sup>   |                             |         |
| Total               | 310.06mm <sup>2</sup> |                             |         |