



# Montana

Create master chef moments in the Montana's impressive kitchen, and enjoy time with the family in the naturally lit, spacious living and dining areas. With four or five bedroom house plans available, this modern house adapts to the needs of your family.

- ✔ House plan options to fit 11m 'wide' narrow lots
- ✔ Entertain the way you like with integrated kitchen, dining and family areas that opens onto the large alfresco space
- ✔ Relax after a long day in the hotel style master suite with walk-in robe and ensuite
- ✔ Give the kids room to play with the upstairs rumpus

## Suitable for

- ▶ Narrow lots
- ▶ Extended family
- ▶ Knockdown rebuild



Classic



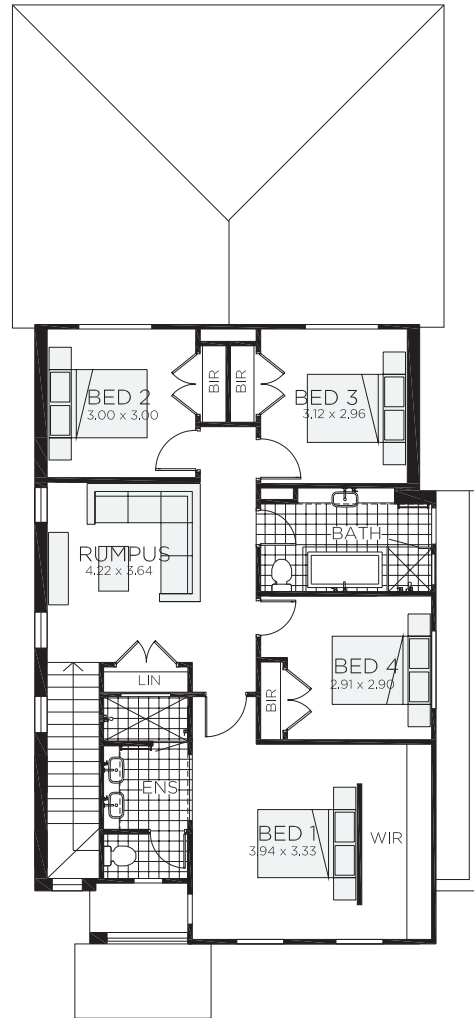
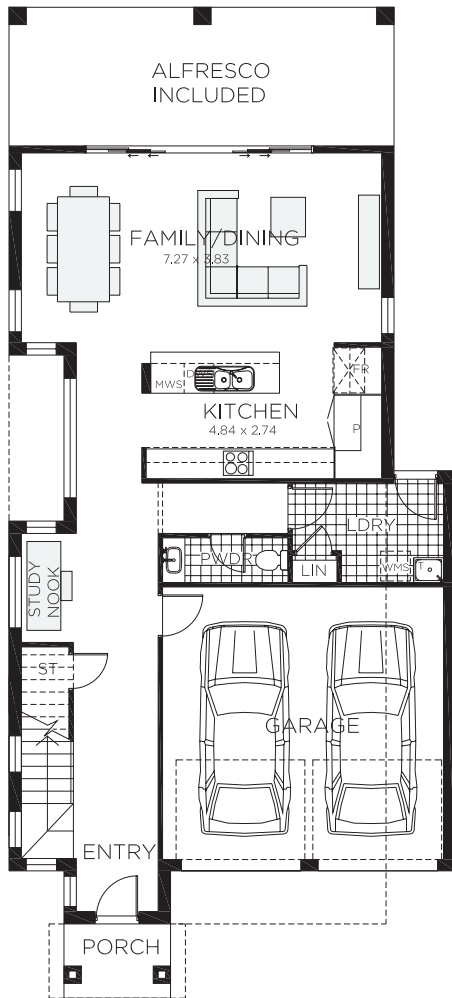
Metro




Regal





Majestic



# Montana 26

 4 bedrooms

 2.5 bathrooms

 2 car spaces

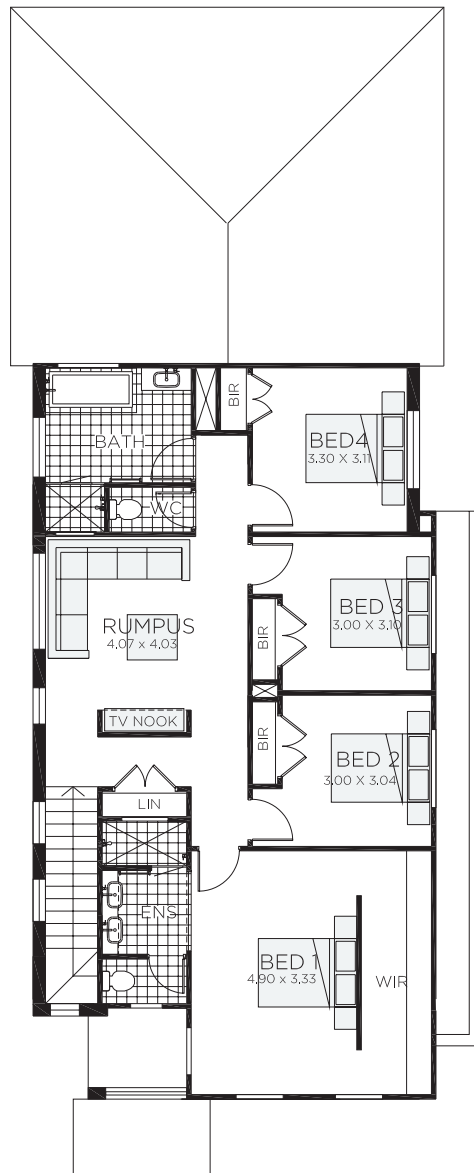
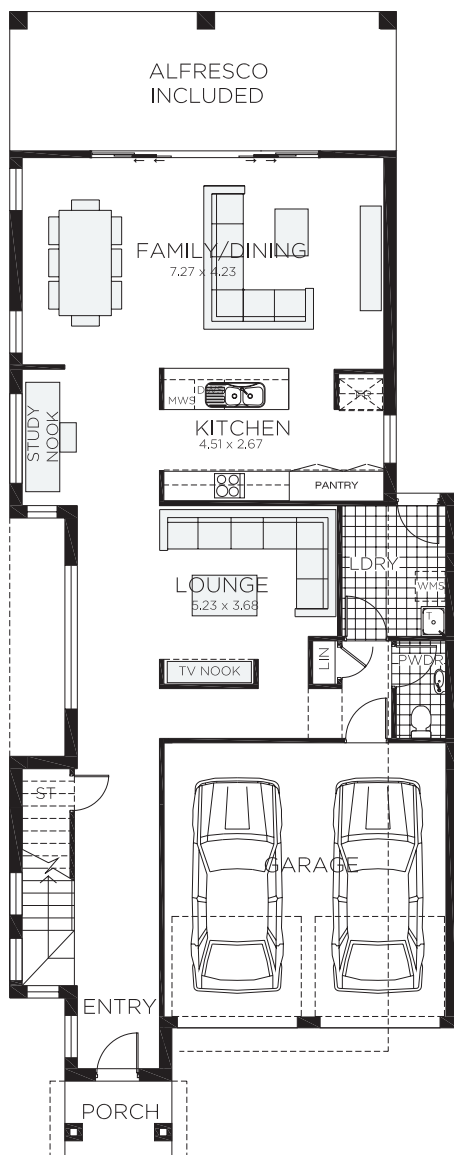
 26.2 sq

Double garage fits: **10.00M** wide zero lot.  
**10.90M** wide standard lot.


Ground Floor Living	88.42m <sup>2</sup>	Overall Width Double Garage	9.000m
First Floor Living	96.55m <sup>2</sup>	Overall Length	20.000m
Garage	33.77m <sup>2</sup>		
Porch	3.22m <sup>2</sup>		
Alfresco	21.75m <sup>2</sup>		
Total	243.71m <sup>2</sup>		





**RAWSON  
HOMES**  
— EST 1978 —



# Montana 30

 4 bedrooms

 2.5 bathrooms

 2 car spaces

 30.6 sq

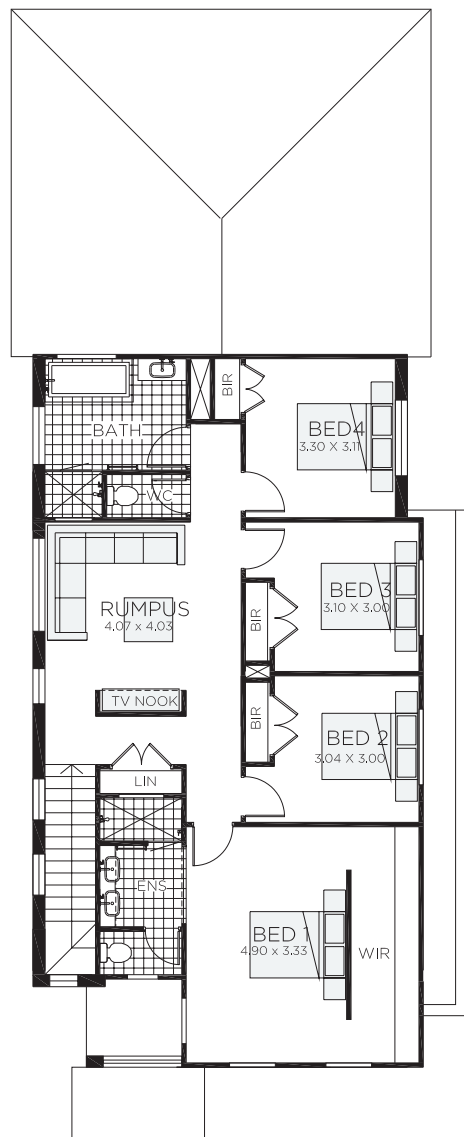
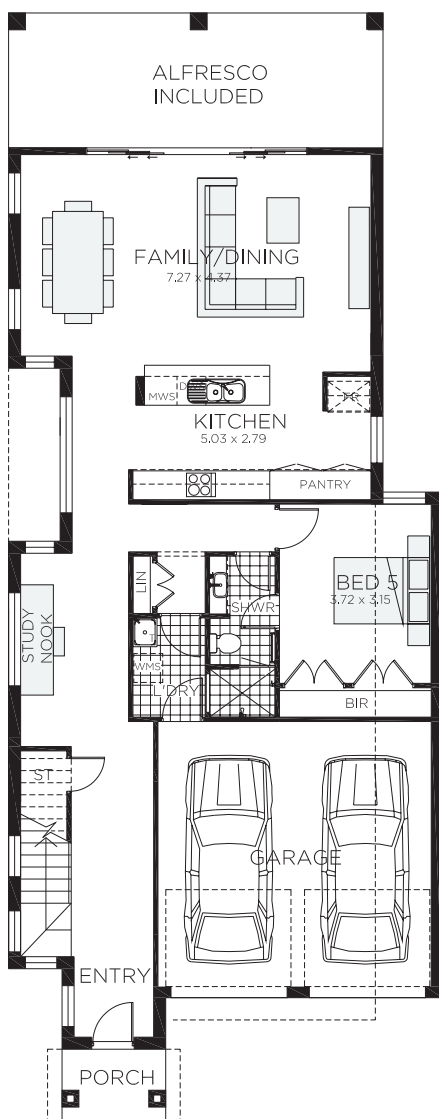
Double garage fits: **10.00M** wide zero lot.  
**10.90M** wide standard lot.

Ground Floor Living	112.44m <sup>2</sup>	Overall Width Double Garage	9.000m
First Floor Living	113.32m <sup>2</sup>	Overall Length	23.000m
Garage	33.77m <sup>2</sup>		
Porch	3.22m <sup>2</sup>		
Alfresco	21.75m <sup>2</sup>		
Total	284.50m <sup>2</sup>		





**RAWSON  
HOMES**  
— EST 1978 —






# Montana 31

 5 bedrooms

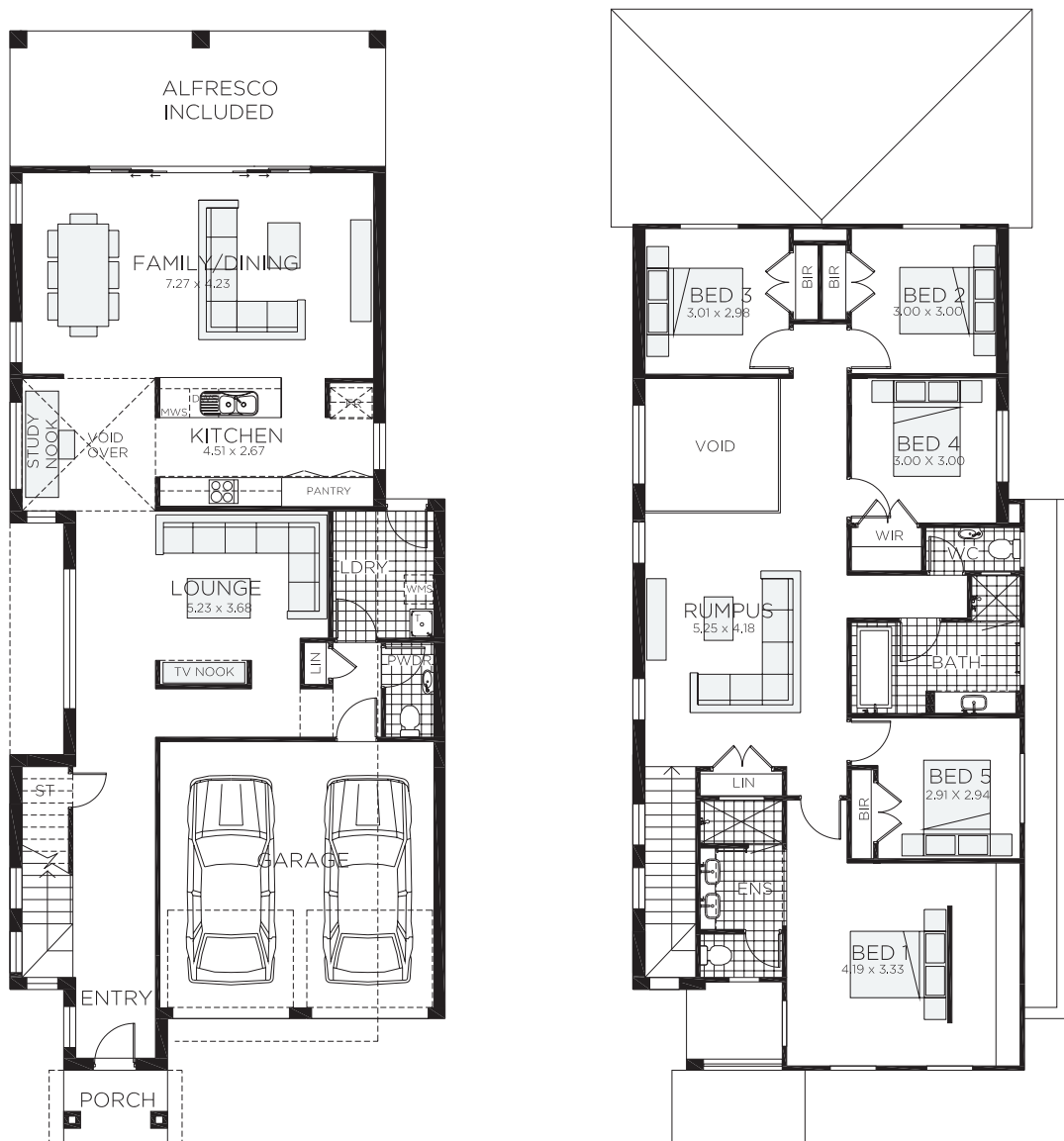
 3 bathrooms

 2 car spaces


 30.8 sq


Double garage fits: **10.00M** wide zero lot.  
**10.90M** wide standard lot.


Ground Floor Living	113.91m <sup>2</sup>	Overall Width Double Garage	9.000m
First Floor Living	113.32m <sup>2</sup>	Overall Length	23.000m
Garage	33.77m <sup>2</sup>		
Porch	3.22m <sup>2</sup>		
Alfresco	21.75m <sup>2</sup>		
Total	285.97m <sup>2</sup>		



# Montana 33

 5 bedrooms

 2.5 bathrooms

 2 car spaces

 32.9 sq

Double garage fits: **10.00M** wide zero lot.  
**10.90M** wide standard lot.

Ground Floor Living	112.44m <sup>2</sup>	Overall Width Double Garage	9.000m
First Floor Living	134.29m <sup>2</sup>	Overall Length	23.000m
Garage	33.77m <sup>2</sup>		
Porch	3.22m <sup>2</sup>		
Alfresco	21.75m <sup>2</sup>		
Total	305.47m <sup>2</sup>		