



Orelia

Indulge your inner chef with the Orelia's single-storey house plan. Positioned around a sizeable kitchen with an island bench and versatile living spaces, this modern home is perfect for entertaining friends or just relaxing with the family at the end of a long week.

- ✔ Natural lighting makes the living areas and bedrooms feel bright, airy and welcoming
- ✔ Casual living space opens onto the alfresco so you can get more fresh air
- ✔ Bedrooms are located together and provide a sanctuary from the rest of the family

Suitable for

- ▶ Knockdown rebuild

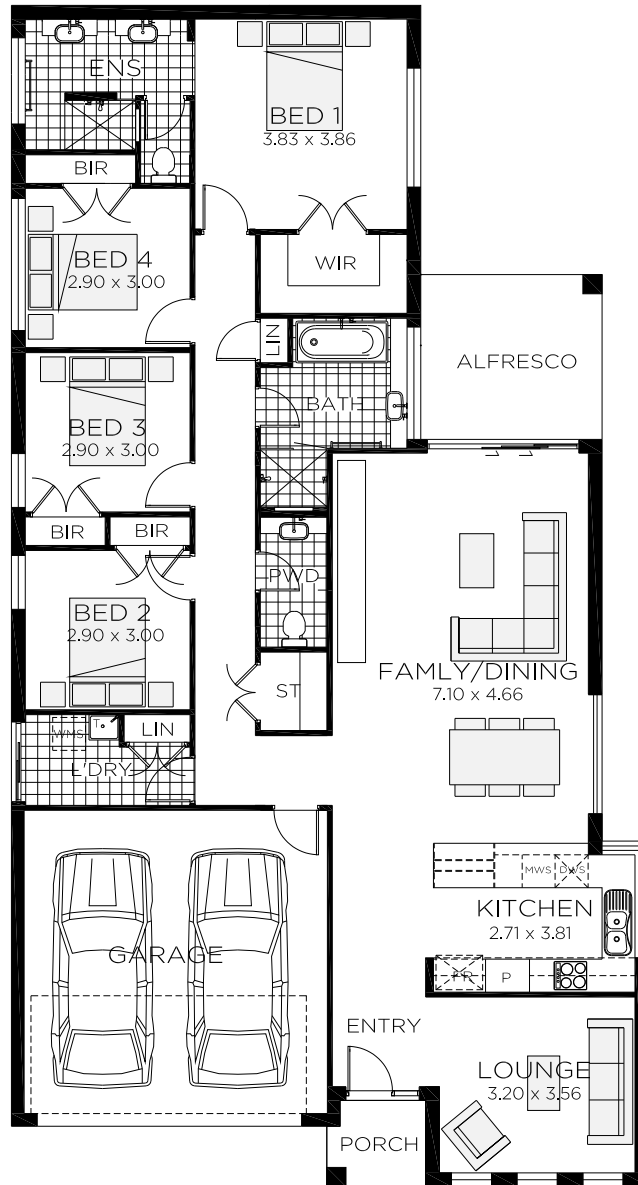




Heritage



Regal



Orelia 23

4 bedrooms

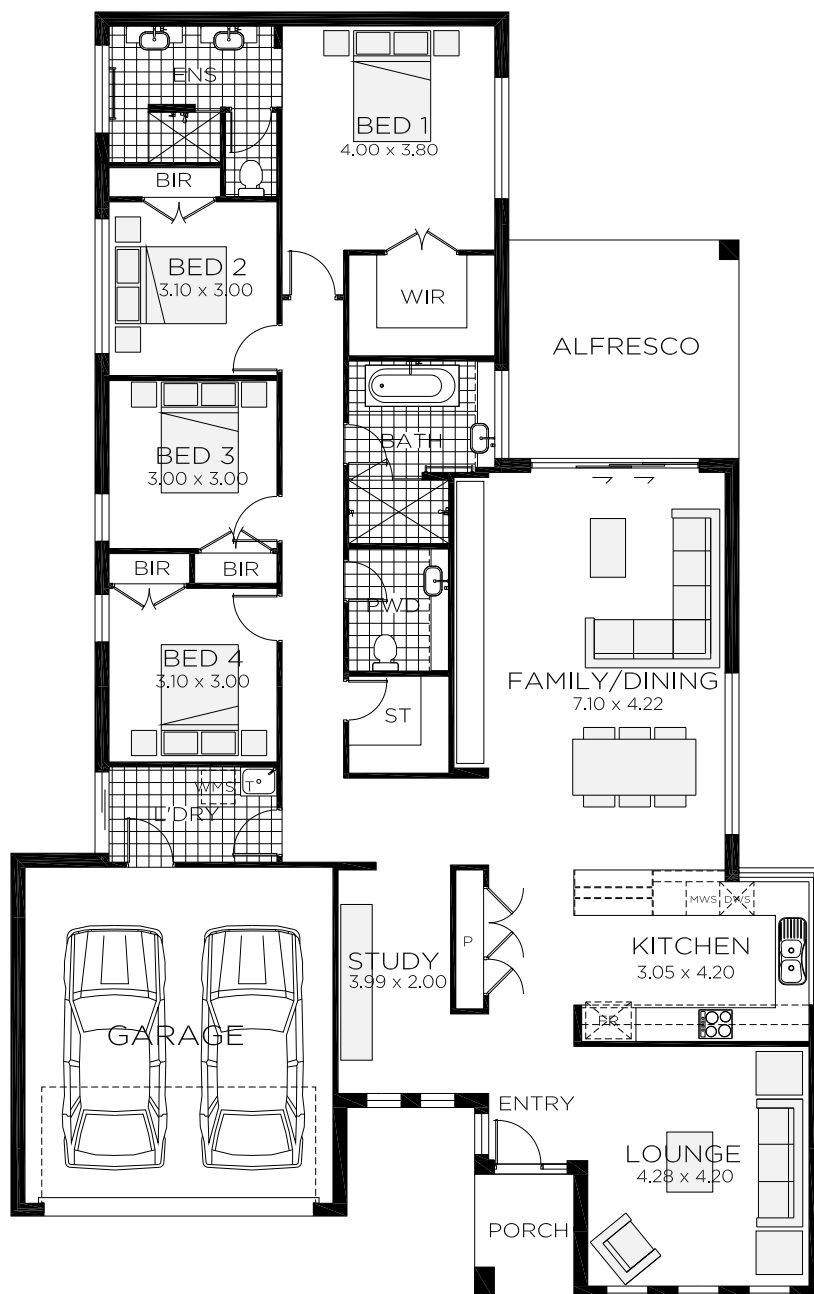
2 bathrooms

2 car spaces


22.9 sq


Double garage fits: **13.50M** wide standard lot.


Ground Floor Living	168.20m ²	Overall Width Double Garage	11.600m
Garage	33.17m ²	Overall Length	21.100m
Porch	1.74m ²		
Alfresco	9.90m ²		
Total	213.01m ²		




Orelia 27

 4 bedrooms

 2 bathrooms

 2 car spaces

 27.4 sq

Double garage fits: **16.40M** wide standard lot.

Ground Floor Living	197.77m ²	Overall Width Double Garage	14.500m
Garage	36.68m ²	Overall Length	23.000m
Porch	3.98m ²		
Alfresco	16.02m ²		
Total	254.45m ²		



**RAWSON
HOMES**
— EST 1978 —