



Sorell Split Level

Between the variety of floor plans to fit different block sizes on a front upward sloping block and additional room options to suit your lifestyle, the Sorell has the perfect combination for just about any family. There's up to six bedrooms available, and the lower levels can be structured as a self-contained unit, additional theatre or even a home office.

- ✔ Designed to suit front upward sloping blocks
- ✔ Four, five or six bedroom house plans available so you have room for the kids, the in-laws and any unexpected guests that might drop by
- ✔ One or two car garage options for your growing car collection
- ✔ Give your teenagers some independence with a self-contained unit option in the lower levels

Suitable for

- ▶ Narrow lots
- ▶ Extended family
- ▶ Knockdown rebuild
- ▶ Split Level



Facades

Sorell Split Level



Classic



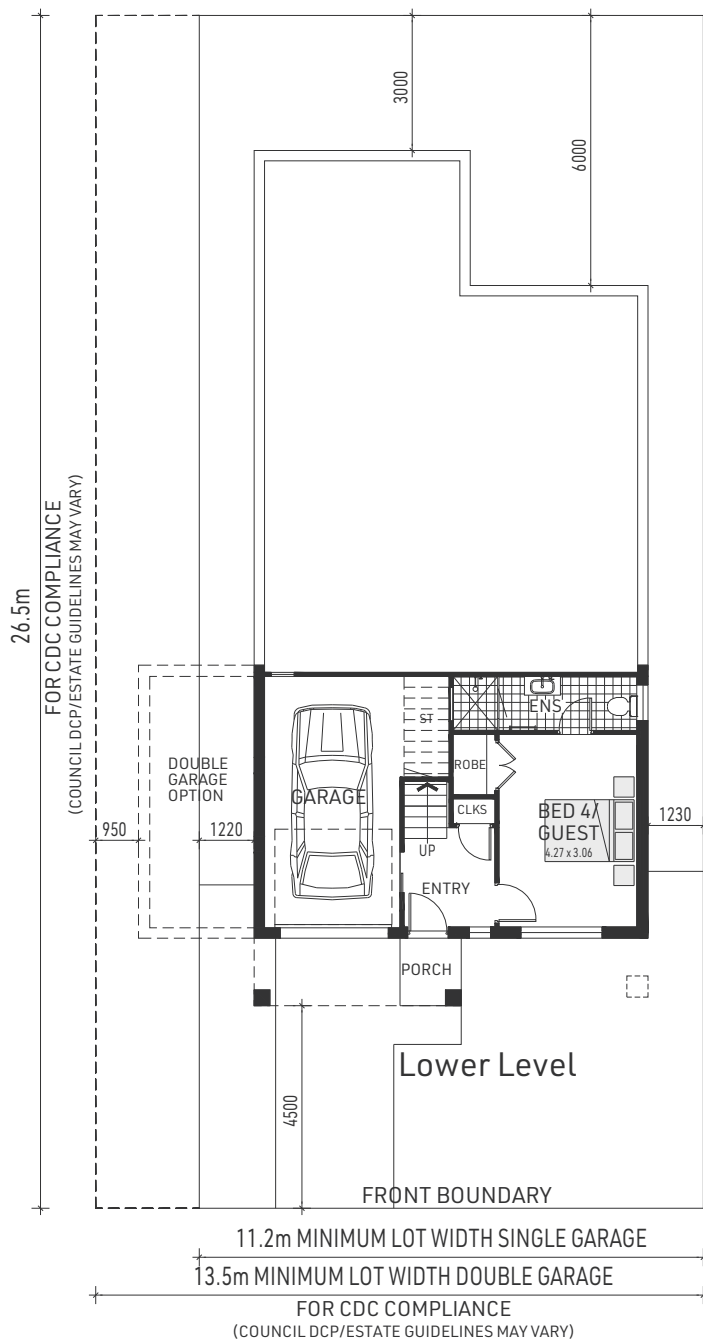
Regal



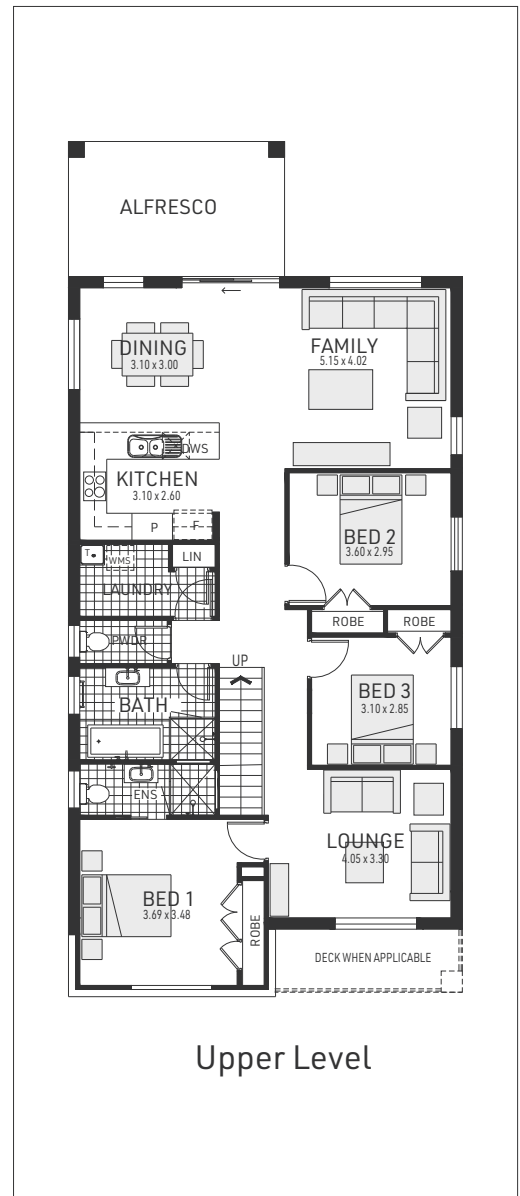
Vogue 22



Vogue 26



LOT SLOPES UPWARDS



Sorell 22

Split Level

4 bedrooms

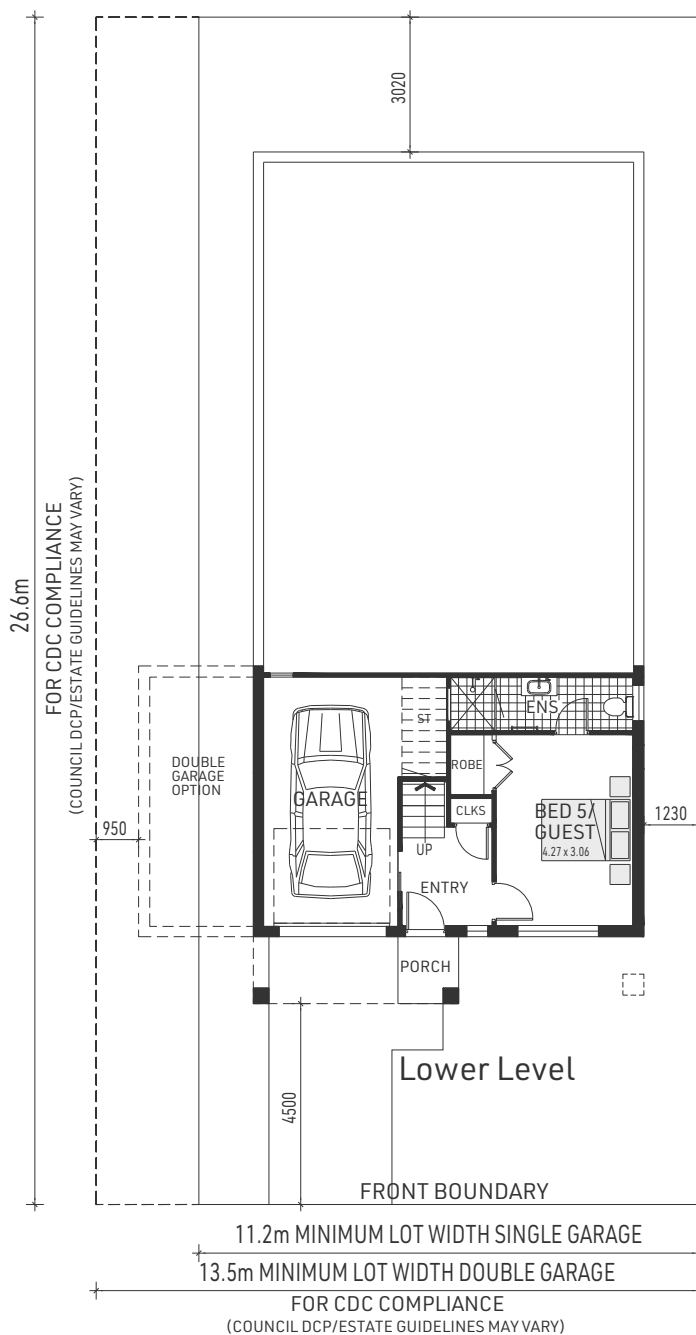
2 bathrooms

1 car spaces

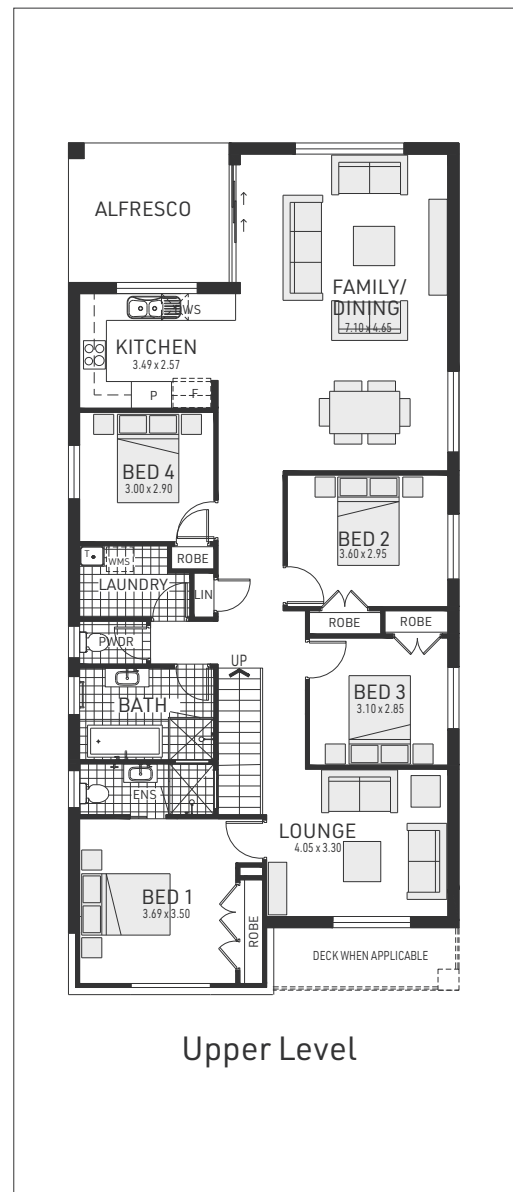
21.7 sq

Single garage fits: **10.65M** wide standard lot.

Entry Level / Lower Floor	29.88m ²	Overall Width Single Garage	8.750m
Upper Floor Area	133.77m ²	Overall Length	19.000m
Garage	21.78m ²		
Porch	1.75m ²		
Alfresco	14.40m ²		
Total	201.58m ²		



LOT SLOPES UPWARDS



Upper Level

Sorell 23

Split Level

5 bedrooms

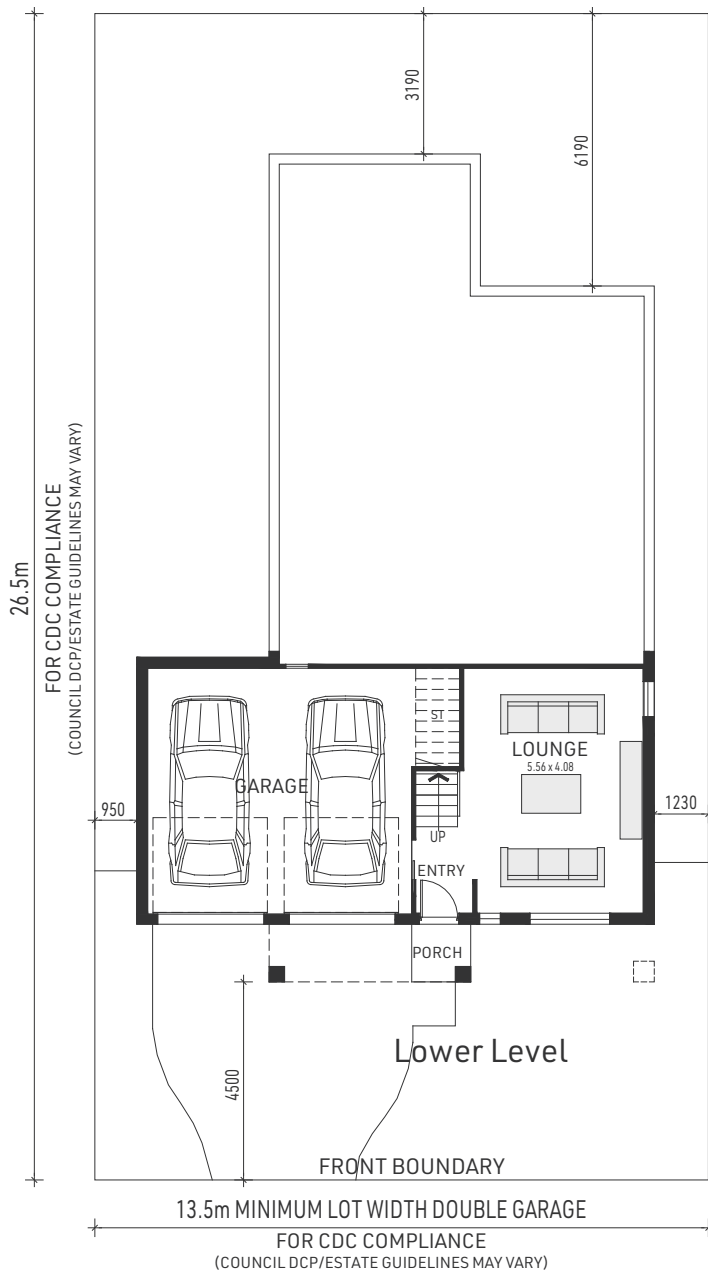
2 bathrooms

1 car spaces

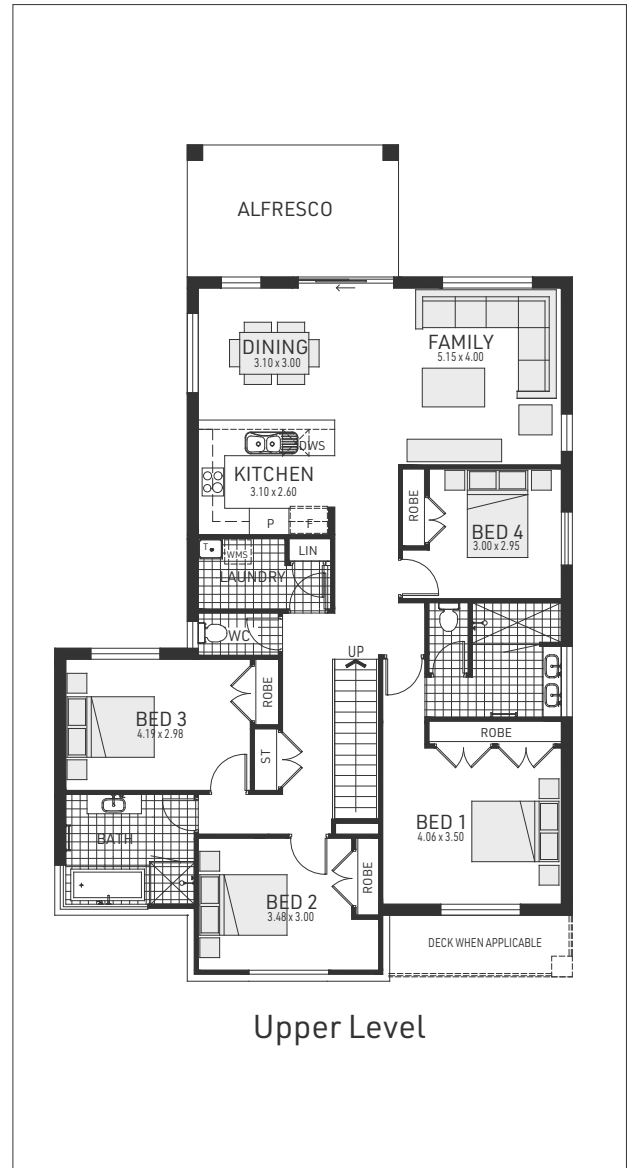
23.0 sq

Single garage fits: **10.65M** wide standard lot.

Entry Level / Lower Floor	29.88m ²	Overall Width Single Garage	8.750m
Upper Floor Area	149.47m ²	Overall Length	19.080m
Garage	21.78m ²		
Porch	1.75m ²		
Alfresco	11.25m ²		
Total	214.13m ²		



LOT SLOPES UPWARDS



Sorell 26

Split Level

4 bedrooms

2 bathrooms

2 car spaces

25.6 sq

Double garage fits: **13.66M** wide standard lot.

Entry Level / Lower Floor	30.00m ²	Overall Width Double Garage	11.760m
Upper Floor Area	152.07m ²	Overall Length	19.000m
Garage	39.92m ²		
Porch	1.75m ²		
Alfresco	14.40m ²		
Total	238.14m ²		