



# Wilton

As one of our latest designs the Wilton is a compact home with key zones for parents and children alike. With a well-appointed master at the front, a separate kids zone and communal areas, this home's seamless flow is perfect for a growing family.

- ✓ Extend the open plan living, kitchen and dining through to the alfresco
- ✓ Functionality features from entry to the backyard with well resolved spaces adapting to block sizes
- ✓ Multiple living areas allows everyone in the family to find their own space to relax - or play!

#### Suitable for

- Narrow lots

#### On Display

**Wilton 26 with New England Facade** on Display at Willowdale

Disclaimer: Photographs, artist impressions and other pictures in this brochure/book may show fixtures, fittings or finishes (render as an example) which are not supplied by Rawson Homes, or which are only available in some Rawson Homes designs or when selected as inclusions above the standard inclusions for a particular design. This may include landscaping and outdoor items, floor coverings, furniture, kitchen, bathroom and light fittings and decorative items, which are shown as examples only. References to block size are based on a standard block which is up to 700m<sup>2</sup> with up to 1m fall across the block, "M" class soil classification, all services within boundaries, garage setback up to 5.5m from front boundary, even cut and fill. Please speak to a Rawson New Home Consultant to discuss detailed home pricing for different designs and inclusions. Builders Lic No. NSW 33493C. ACT 19936252B. ABN 67 053 733 841. ACN 053 733 841



**RAWSON  
HOMES**  
— EST 1978 —



Classic



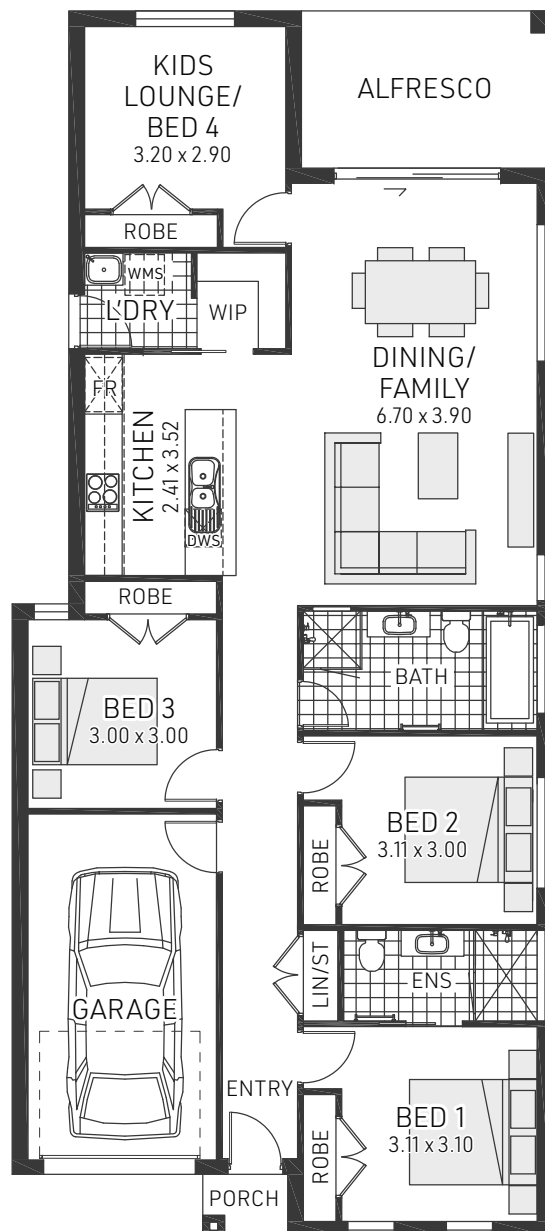
Trend




Regal





New England




# Wilton 17

 4 bedrooms

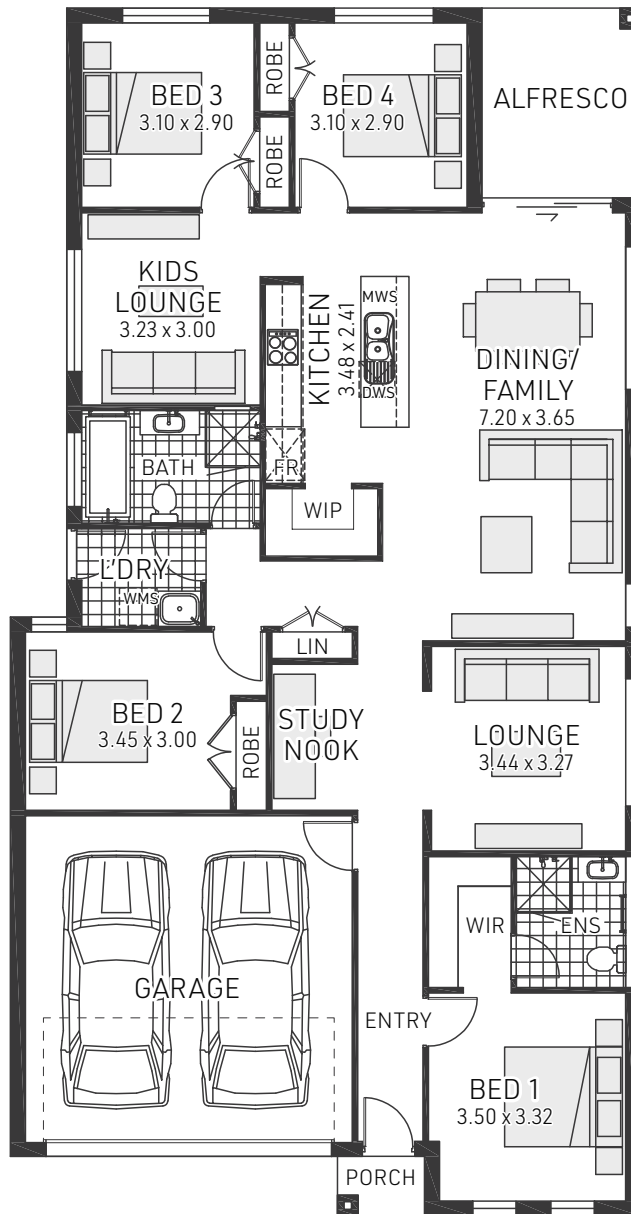
 2 bathrooms

 1 car spaces


 16.8 sq


Single garage fits: **10.50M** wide zero lot.  
**10.00M** wide standard lot.


Ground Floor Living	126.21m <sup>2</sup>	Overall Width Single Garage	8.600m
Garage	18.62m <sup>2</sup>	Overall Length	19.500m
Porch	1.35m <sup>2</sup>		
Alfresco	10.00m <sup>2</sup>		
Total	156.18m <sup>2</sup>		




# Wilton 21

 4 bedrooms

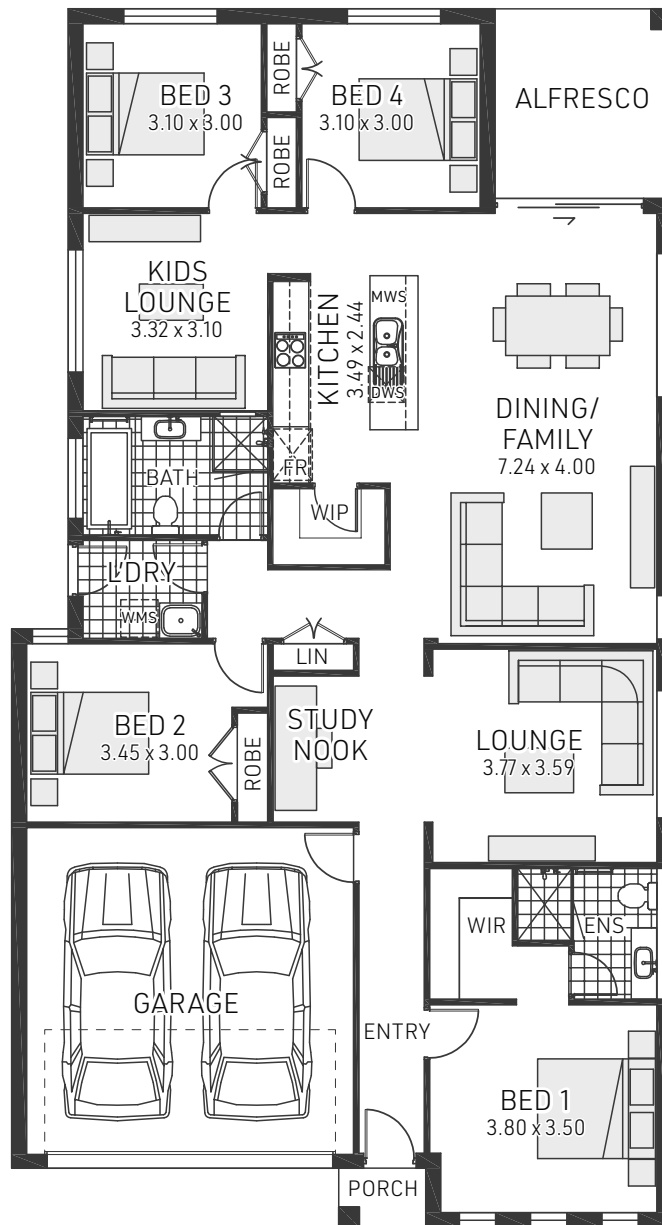
 2 bathrooms

 2 car spaces


 21.5 sq


Double garage fits: **12.50M** wide zero lot.  
**12.00M** wide standard lot.


Ground Floor Living	157.13m <sup>2</sup>	Overall Width Double Garage	10.600m
Garage	32.95m <sup>2</sup>	Overall Length	20.310m
Porch	1.47m <sup>2</sup>		
Alfresco	8.52m <sup>2</sup>		
Total	200.07m <sup>2</sup>		



# Wilton 23

 4 bedrooms

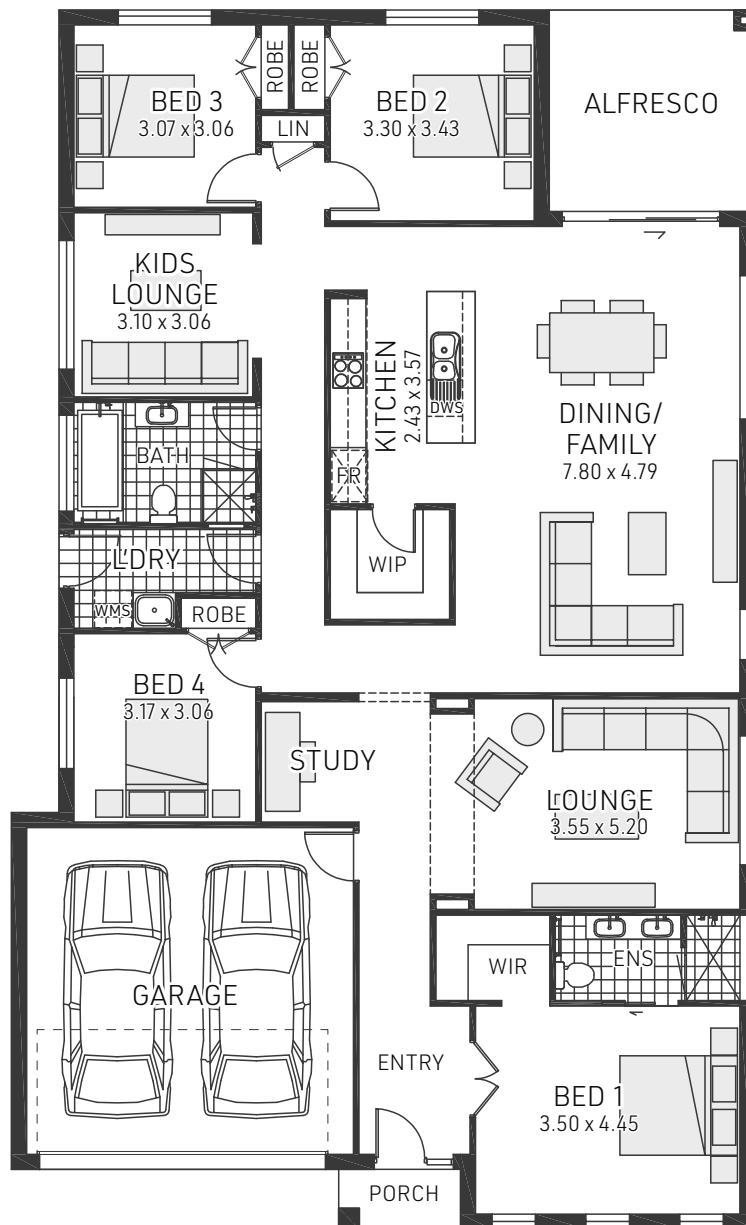
 2 bathrooms

 2 car spaces


 22.8 sq


Double garage fits: **13.00M** wide zero lot.  
**12.50M** wide standard lot.


Ground Floor Living	168.25m <sup>2</sup>	Overall Width Double Garage	11.100m
Garage	32.95m <sup>2</sup>	Overall Length	20.500m
Porch	1.47m <sup>2</sup>		
Alfresco	9.47m <sup>2</sup>		
Total	212.14m <sup>2</sup>		



# Wilton 26

 4 bedrooms

 2 bathrooms

 2 car spaces

 25.7 sq

Double garage fits: **14.4M** wide standard lot.

Ground Floor Living	192.28m <sup>2</sup>	Overall Width Double Garage	12.500m
Garage	33.32m <sup>2</sup>	Overall Length	20.425m
Porch	1.96m <sup>2</sup>		
Alfresco	11.73m <sup>2</sup>		
Total	239.29m <sup>2</sup>		