



Windermere

The Windermere is perfect for those who love having friends and family over. With the kitchen and dining spaces flowing into the entertaining area and a choice between three, four or five bedroom house plans, the Windermere has all the space you need.

- ✔ Entertain the way you like with the spacious ground floor
- ✔ Five bedroom house plans available for larger families
- ✔ Separate lounge at the front of the house lets you unwind in peace
- ✔ Expansive master ensuite so you and your partner can get ready at the same time

Suitable for

- ▶ Extended family
- ▶ Knockdown rebuild





Classic



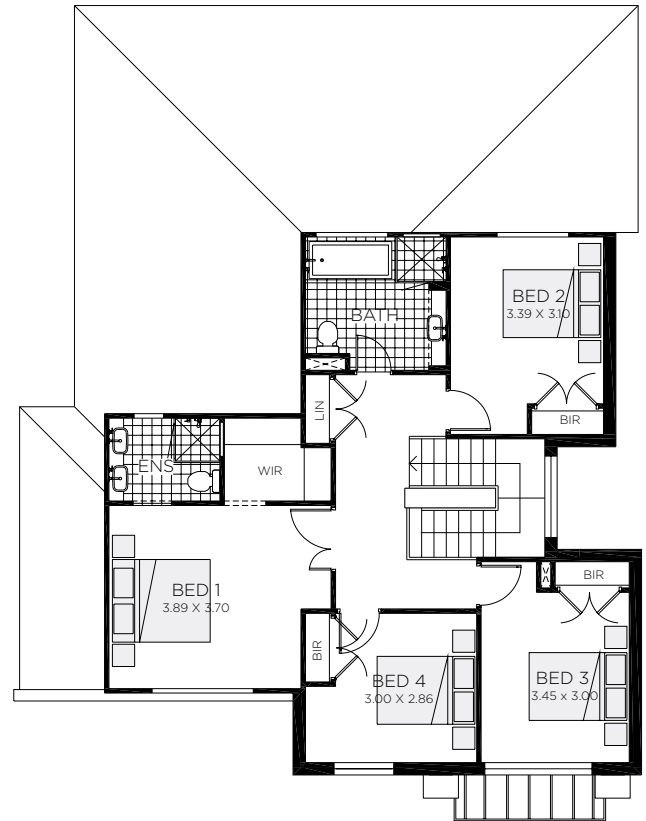
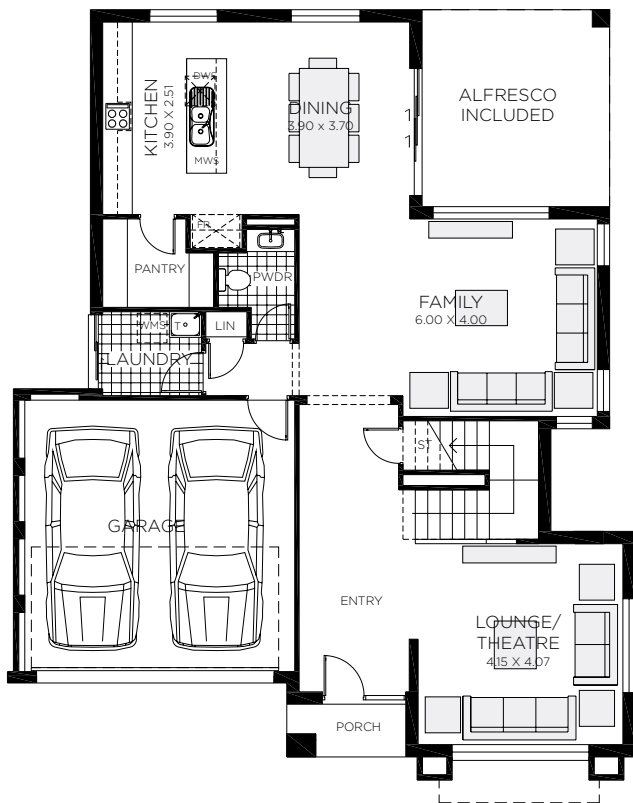
Majestic




Trend





Vogue



Windermere 28

 4 bedrooms

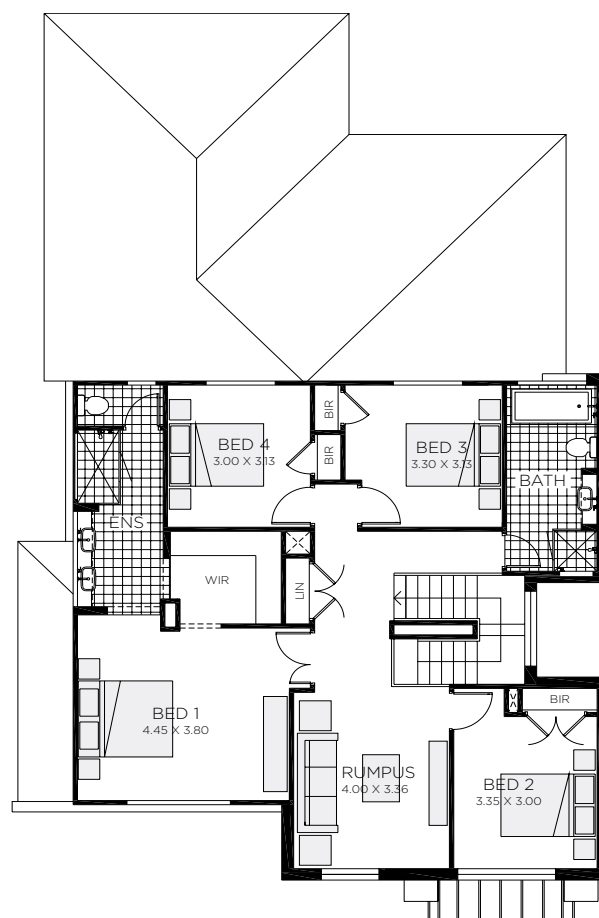
 2 car spaces

 2.5 bathrooms


 27.6 sq


Double garage fits: **14.50M** wide standard lot.


Ground Floor Living	112.44m ²	Overall Width Double Garage	12.600m
First Floor Living	93.43m ²	Overall Length	20.500m
Garage	32.98m ²		
Porch	2.58m ²		
Alfresco	15.16m ²		
Total	256.59m ²		




Windermere 32

 4-5 bedrooms

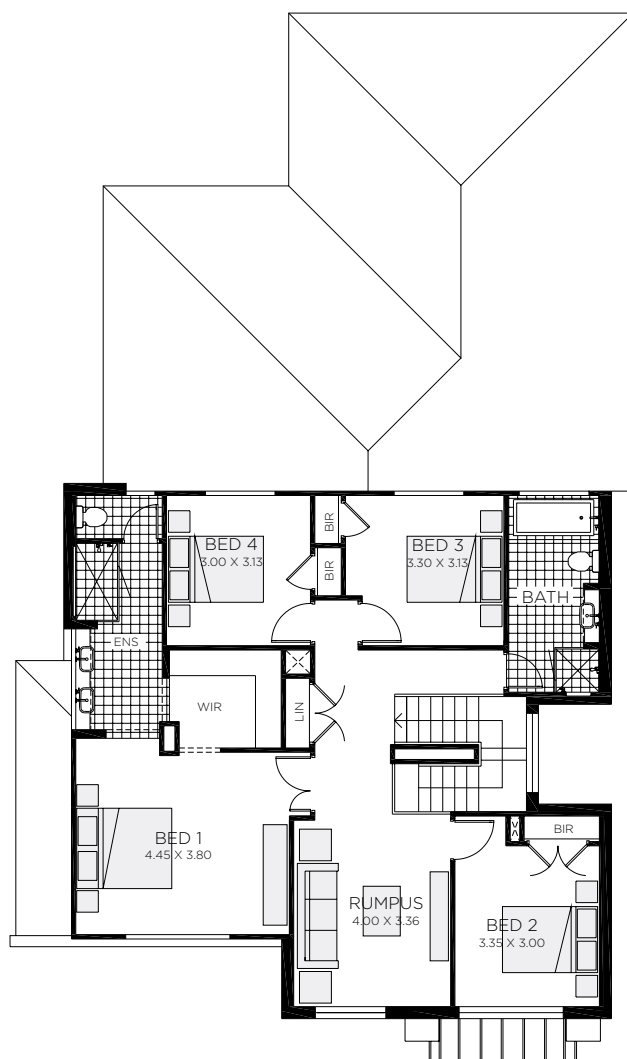
 2.5-3.5 bathrooms

 2 car spaces


 32.2 sq


Double garage fits: **14.30M** wide standard lot.


Ground Floor Living	131.41m ²	Overall Width Double Garage	12.410m
First Floor Living	114.72m ²	Overall Length	18.940m
Garage	32.85m ²		
Porch	2.50m ²		
Alfresco	18.00m ²		
Total	299.48m ²		




Windermere 34

 5 bedrooms

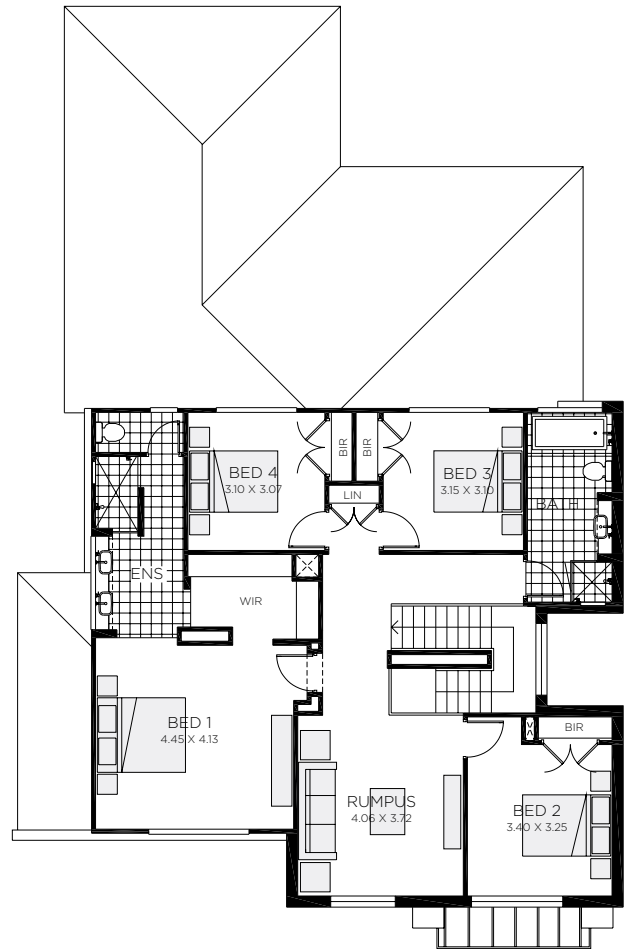
 2 car spaces

 3 bathrooms

 34.0 sq


Double garage fits: **14.31M** wide standard lot.


Ground Floor Living	146.15m ²	Overall Width Double Garage	12.410m
First Floor Living	114.68m ²	Overall Length	20.500m
Garage	32.85m ²		
Porch	2.50m ²		
Alfresco	21.60m ²		
Total	317.78m ²		



Windermere 35

 4-5 bedrooms

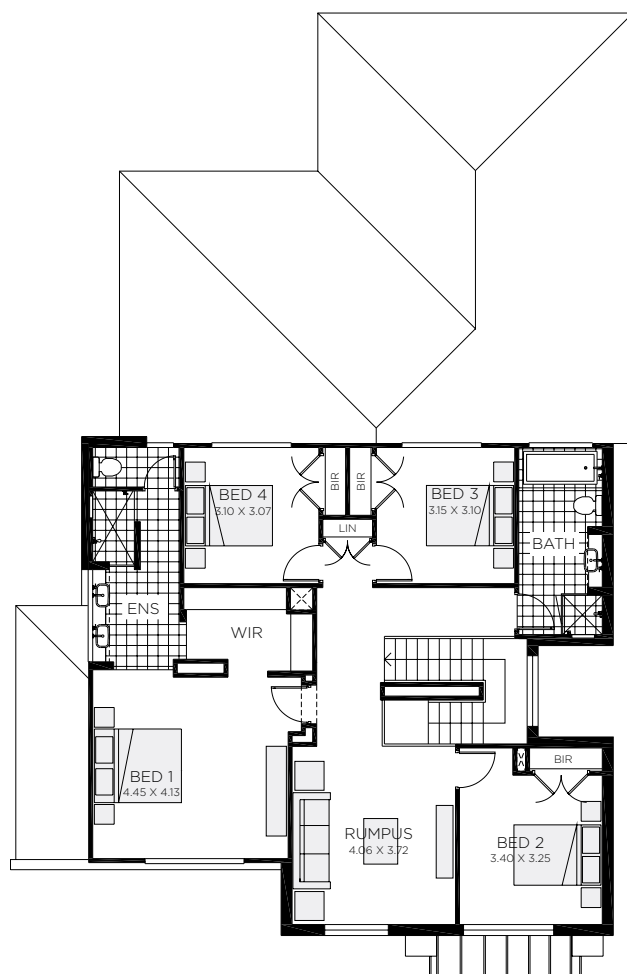
 2.5-3.5 bathrooms

 2 car spaces


 35.3 sq


Double garage fits: **15.00M** wide standard lot.


Ground Floor Living	148.85m ²	Overall Width Double Garage	13.100m
First Floor Living	123.14m ²	Overall Length	19.780m
Garage	33.94m ²		
Porch	2.78m ²		
Alfresco	19.07m ²		
Total	327.78m ²		



Windermere 37

 5 bedrooms

 3 bathrooms

 2 car spaces

 36.6 sq

Double garage fits: **15.00M** wide standard lot.

Ground Floor Living	156.68m ²	Overall Width Double Garage	13.100m
First Floor Living	124.43m ²	Overall Length	20.550m
Garage	33.94m ²		
Porch	2.78m ²		
Alfresco	22.58m ²		
Total	340.41m ²		