



Balmoral 35 MKI

Yearly Rental Return*

\$69,875

Display home for sale **\$1,075,000**

Our display homes are fitted with modern features, enhanced by cutting edge design and taking full advantage of the plot of land they're sitting on.

If you're interested in purchasing this home, please contact customer care for more information on 1300 223 345 or email customercare@rawson.com.au

1045 Emerald, Leppington

 5  3  2 **Lot size** 450m²

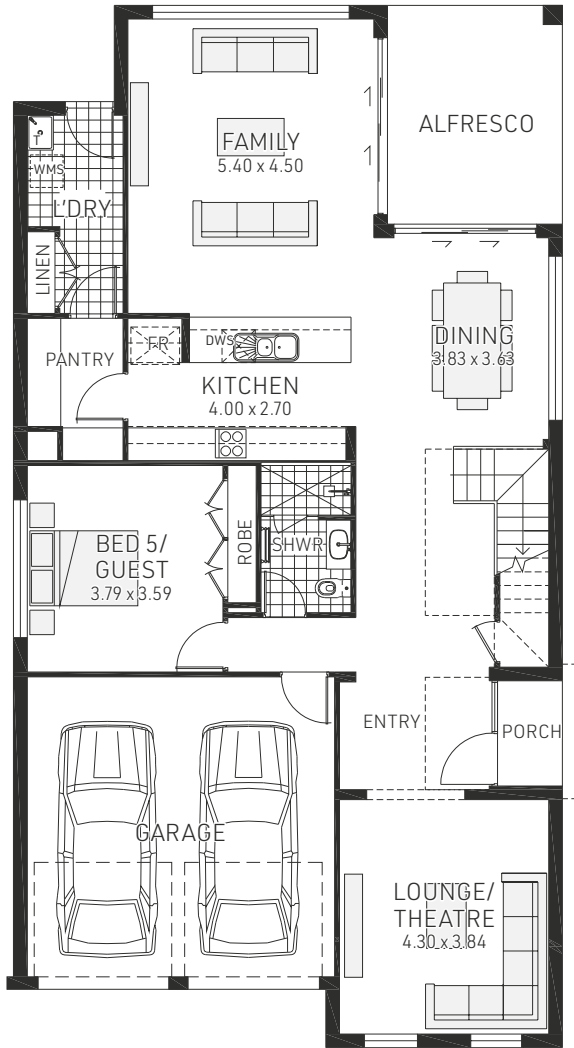
- Lease back at 6.5% per annum
- Lease term: November 2021 x4 6 months



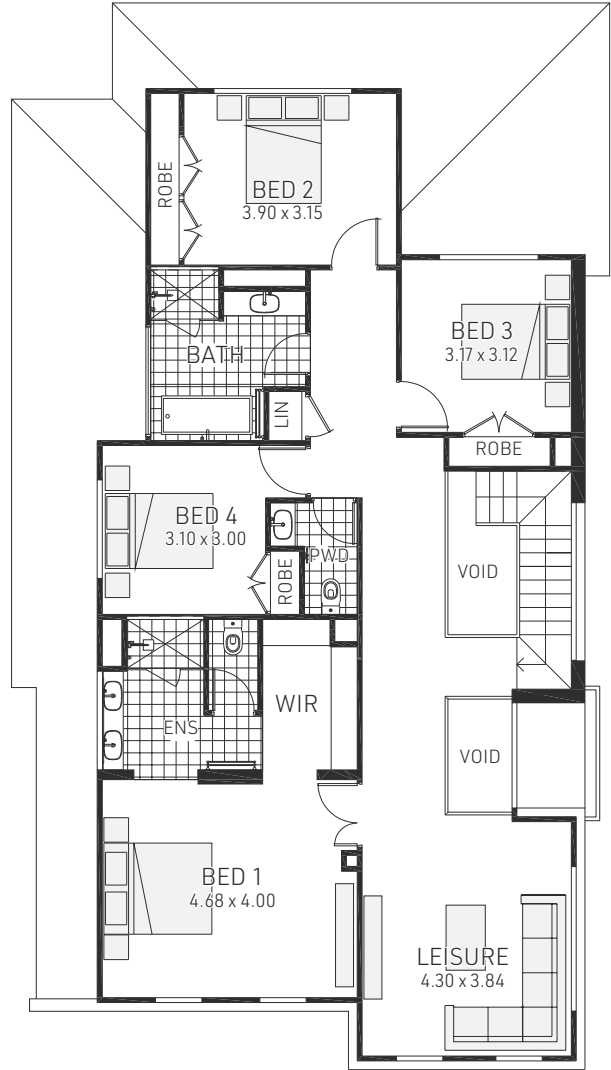
To find out more visit www.rawsonhomes.com.au/display-homes-for-sale

*Rent is calculated at a fixed rate of 6.5% p.a. of the contract price, paid monthly inclusive of GST and all outgoings and utilities (excluding electricity usage). Minimum lease terms apply. Rawson Homes will maintain the home during the lease term. Rawson Homes signage and fencing will be in place during the lease and will be removed prior to customer taking possession of the home at the end of the lease term. NSW BL No. 33493C ACT BL No. 19936252

Balmoral 35 MKI



Ground Floor



First Floor

1045 Emerald, Leppington

 5	 3	Ground floor living	134.12m ²	Porch	2.40m ²	Overall Width	10.190m
		First Floor Living	137.73m ²	Alfresco	12.87m ²	Overall Length	19.120m
 2	 34.5sq	Garage	33.75m ²	Total	320.87m²	Double garage fits 12.10m wide standard lot	



To find out more visit www.rawsonhomes.com.au/display-homes-for-sale

*Rent is calculated at a fixed rate of 6.5% p.a. of the contract price, paid monthly inclusive of GST and all outgoings and utilities (excluding electricity usage). Minimum lease terms apply. Rawson Homes will maintain the home during the lease term. Rawson Homes signage and fencing will be in place during the lease and will be removed prior to customer taking possession of the home at the end of the lease term. NSW BL No. 33493C ACT BL No. 19936252