



Chifley 37 MKII

Yearly Rental Return*

\$48,750

Display home for sale

\$750,000

Our display homes are fitted with modern features, enhanced by cutting edge design and taking full advantage of the plot of land they're sitting on.

If you're interested in purchasing this home, please contact customer care for more information on 1300 223 345 or email customercare@rawson.com.au

20 Kingham Ave, Thornton

 4  2.5  2 **Lot size** 502m²

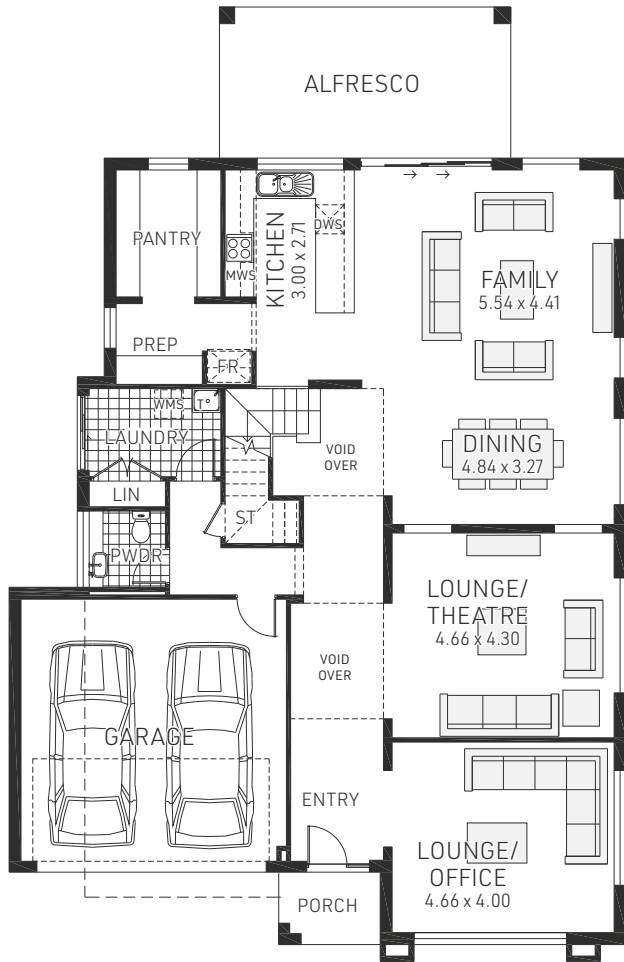
- Lease back at 6.5% per annum
- Lease term: June 2021 x8 3 months



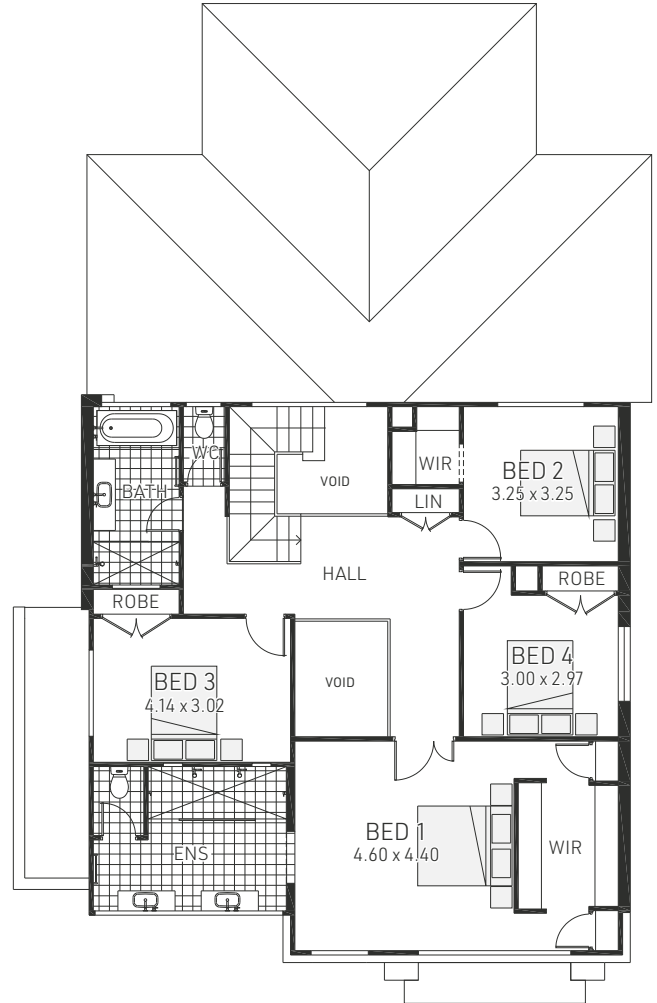
To find out more visit www.rawsonhomes.com.au/display-homes-for-sale

*Rent is calculated at a fixed rate of 6.5% p.a. of the contract price, paid monthly inclusive of GST and all outgoing and utilities (excluding electricity usage). Minimum lease terms apply. Rawson Homes will maintain the home during the lease term. Rawson Homes signage and fencing will be in place during the lease and will be removed prior to customer taking possession of the home at the end of the lease term. NSW BL No. 33493C ACT BL No. 19936252

Chifley 37 MKII



Ground Floor



First Floor

20 Kingham Ave, Thornton

 4	 2.5	Ground Floor Living	152.70m ²	Porch	3.29m ²	Overall Width	12.950m
		First Floor Living	130.35m ²	Alfresco	19.38m ²	Overall Length	20.030m
 2	 36.5sq	Garage	33.70m ²	Total	339.42m²	Double garage fits 14.85m wide standard lot	



To find out more visit www.rawsonhomes.com.au/display-homes-for-sale

*Rent is calculated at a fixed rate of 6.5% p.a. of the contract price, paid monthly inclusive of GST and all outgoings and utilities (excluding electricity usage). Minimum lease terms apply. Rawson Homes will maintain the home during the lease term. Rawson Homes signage and fencing will be in place during the lease and will be removed prior to customer taking possession of the home at the end of the lease term. NSW BL No. 33493C ACT BL No. 19936252