



# Grace 24

Yearly Rental Return\*

**\$43,875**

Display home for sale

**\$675,000**

Our display homes are fitted with modern features, enhanced by cutting edge design and taking full advantage of the plot of land they're sitting on.

If you're interested in purchasing this home, please contact customer care for more information on 1300 223 345 or email [customercare@rawson.com.au](mailto:customercare@rawson.com.au)

## 18 Kingham Ave, Thornton

 4  2  2 **Lot size** 450m<sup>2</sup>

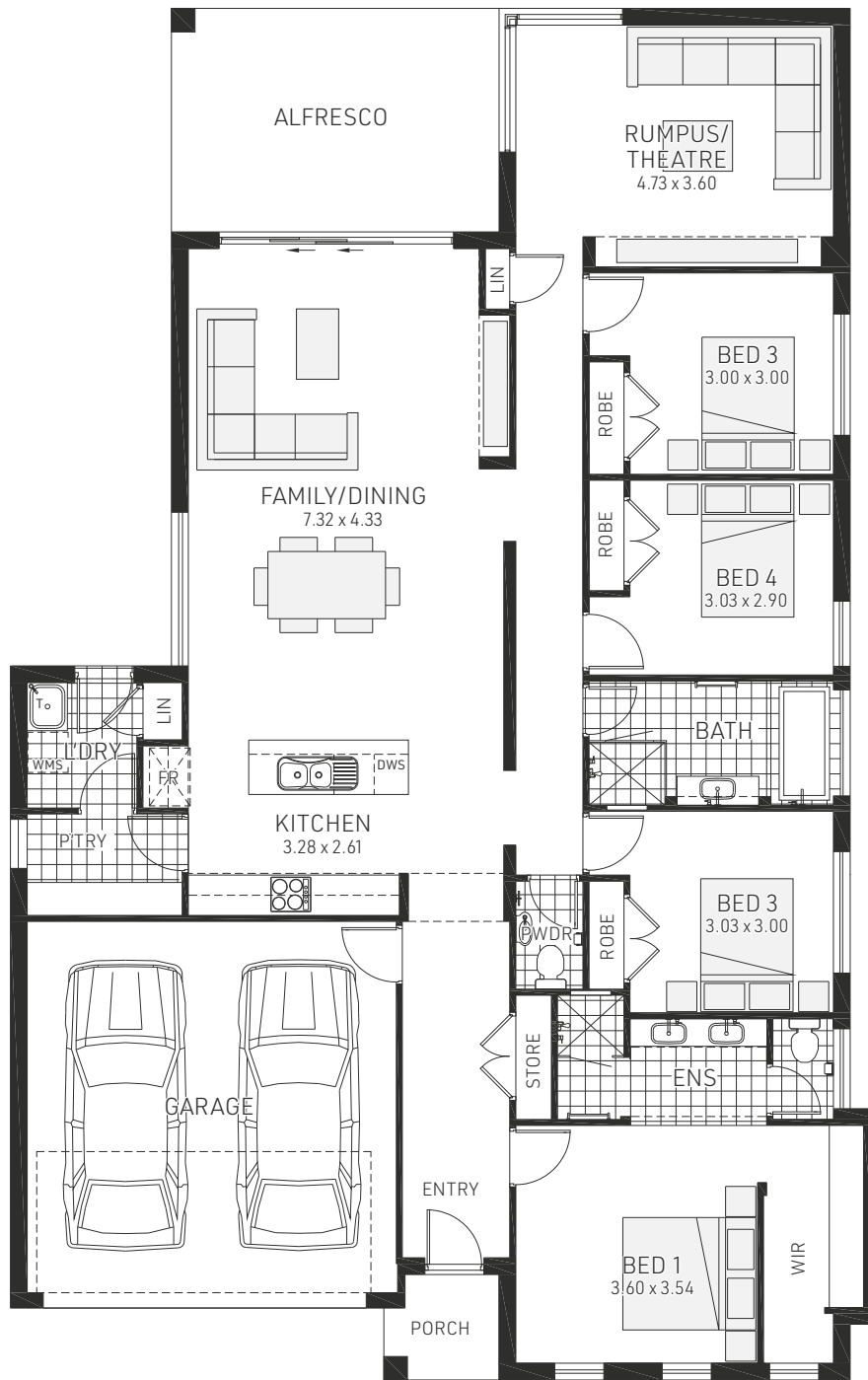
- Lease back at 6.5% per annum
- Lease term: June 2021 x8 3 month options



To find out more visit [www.rawsonhomes.com.au/display-homes-for-sale](http://www.rawsonhomes.com.au/display-homes-for-sale)

\*Rent is calculated at a fixed rate of 6.5% p.a. of the contract price, paid monthly inclusive of GST and all outgoings and utilities (excluding electricity usage). Minimum lease terms apply. Rawson Homes will maintain the home during the lease term. Rawson Homes signage and fencing will be in place during the lease and will be removed prior to customer taking possession of the home at the end of the lease term. NSW BL No. 33493C ACT BL No. 19936252

# Grace 24



## 18 Kingham Ave, Thornton

 4	 2	Ground Floor Living	175.59m <sup>2</sup>	Porch	2.53m <sup>2</sup>	Overall Garage Width	12.960m
 2	 24.4sq	Garage	33.18m <sup>2</sup>	Alfresco	16.24m <sup>2</sup>	Overall Length	20.430m
		<b>Total</b>	<b>227.54m<sup>2</sup></b>			<b>Double garage fits 14.86m wide standard lot</b>	



To find out more visit [www.rawsonhomes.com.au/display-homes-for-sale](http://www.rawsonhomes.com.au/display-homes-for-sale)

\*Rent is calculated at a fixed rate of 6.5% p.a. of the contract price, paid monthly inclusive of GST and all outgoings and utilities (excluding electricity usage). Minimum lease terms apply. Rawson Homes will maintain the home during the lease term. Rawson Homes signage and fencing will be in place during the lease and will be removed prior to customer taking possession of the home at the end of the lease term. NSW BL No. 33493C ACT BL No. 19936252