



Display home for sale

\$959,000

Our display homes are fitted with modern features, enhanced by cutting edge design and taking full advantage of the plot of land they're sitting on.

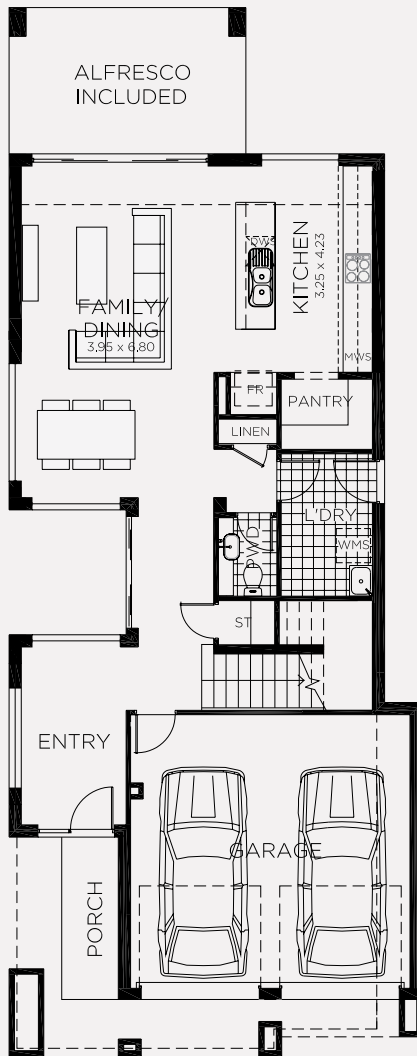
**89 Jamboree Avenue,
Denham Court**

4 **2.5** **2** **Lot size** 451m²

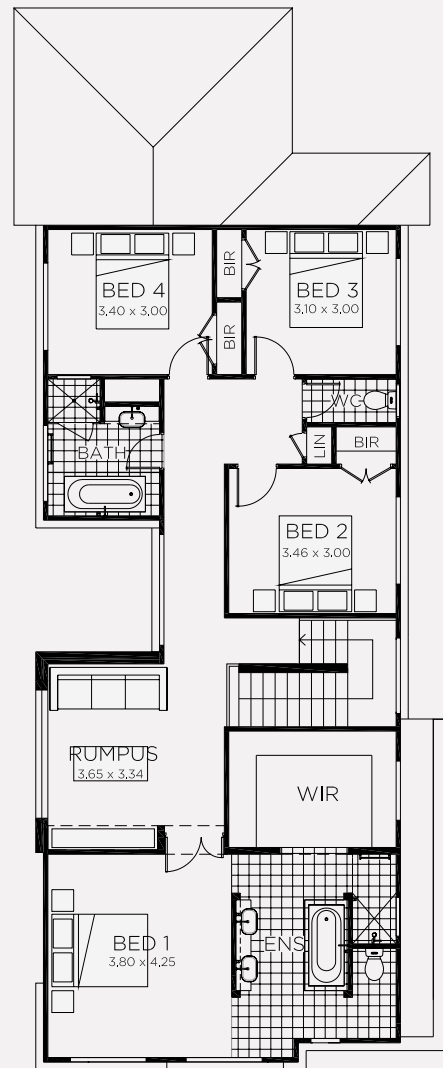
If you're interested in purchasing this home, please contact Lester Hopman for more information on 0411 278 102 or email lester.hopman@rawson.com.au

To find out more visit www.rawsonhomes.com.au/display-homes-for-sale

*Rent is calculated at a fixed rate of 7% p.a. of the contract price, paid monthly inclusive of GST and all outgoings and utilities (excluding electricity usage). Minimum lease terms apply. Rawson Homes will maintain the home during the lease term. Rawson Homes signage and fencing will be in place during the lease and will be removed prior to customer taking possession of the home at the end of the lease term. NSW BL No. 33493C ACT BL No. 19936252



GROUND FLOOR



FIRST FLOOR

89 Jamboree Avenue, Denham Court

4 2.5 2 **Lot size** 451m²

Ground Floor Living	88.65m ²
First Floor Living	120.97m ²
Garage	36.30m ²
Porch	3.86m ²
Alfresco	14.56m ²
Total	264.34m²
Overall Width Double Garage	8.470m
Overall Length	21.500m

To find out more visit www.rawsonhomes.com.au/display-homes-for-sale

*Rent is calculated at a fixed rate of 7% p.a. of the contract price, paid monthly inclusive of GST and all outgoings and utilities (excluding electricity usage). Minimum lease terms apply. Rawson Homes will maintain the home during the lease term. Rawson Homes signage and fencing will be in place during the lease and will be removed prior to customer taking possession of the home at the end of the lease term. NSW BL No. 33493C ACT BL No. 19936252