



Yearly Rental Return* **\$41,993**

Display home for sale **\$599,900**

Our display homes are fitted with modern features, enhanced by cutting edge design and taking full advantage of the plot of land they're sitting on.

If you're interested in purchasing this home, please contact Lester Hopman for more information on 0411 278 102 or email lester.hopman@rawson.com.au

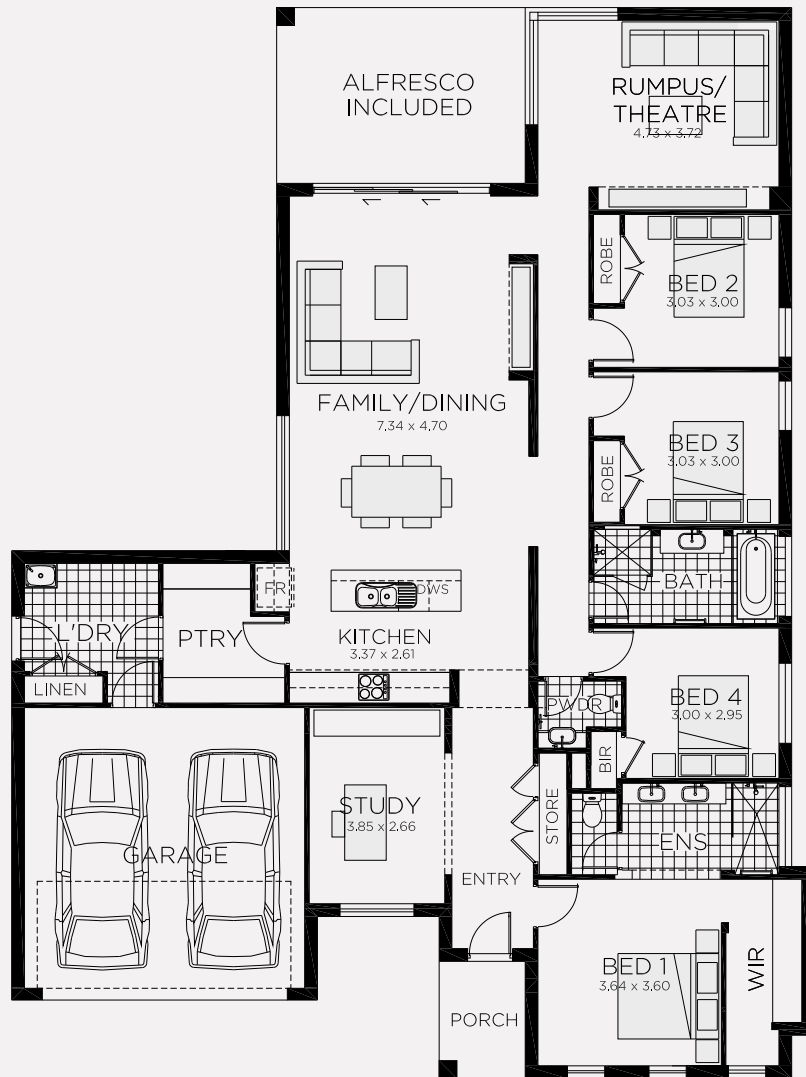
33 William Maker Drive, Orange

 4  2  2 **Lot size** 715m²

- Lease back at 7% per annum
- Minimum term: til May 2020
- Maximum term: til May 2022

To find out more visit www.rawsonhomes.com.au/display-homes-for-sale

*Rent is calculated at a fixed rate of 7% p.a. of the contract price, paid monthly inclusive of GST and all outgoings and utilities (excluding electricity usage). Minimum lease terms apply. Rawson Homes will maintain the home during the lease term. Rawson Homes signage and fencing will be in place during the lease and will be removed prior to customer taking possession of the home at the end of the lease term. NSW BL No. 33493C ACT BL No. 19936252



33 William Maker Drive, Orange

4 2 2 **Lot size** 715m²

Ground Floor Living	196.66m ²
Garage	34.42m ²
Porch	3.84m ²
Alfresco	16.83m ²
Total	252.05m²
Overall Width Double Garage	15.760m
Overall Length	21.020m

To find out more visit www.rawsonhomes.com.au/display-homes-for-sale

*Rent is calculated at a fixed rate of 7% p.a. of the contract price, paid monthly inclusive of GST and all outgoings and utilities (excluding electricity usage). Minimum lease terms apply. Rawson Homes will maintain the home during the lease term. Rawson Homes signage and fencing will be in place during the lease and will be removed prior to customer taking possession of the home at the end of the lease term. NSW BL No. 33493C ACT BL No. 19936252